



Public Meeting
SULLIVAN ROAD
West Bridge Replacement
Project



CH2MHILL

January 9, 2013

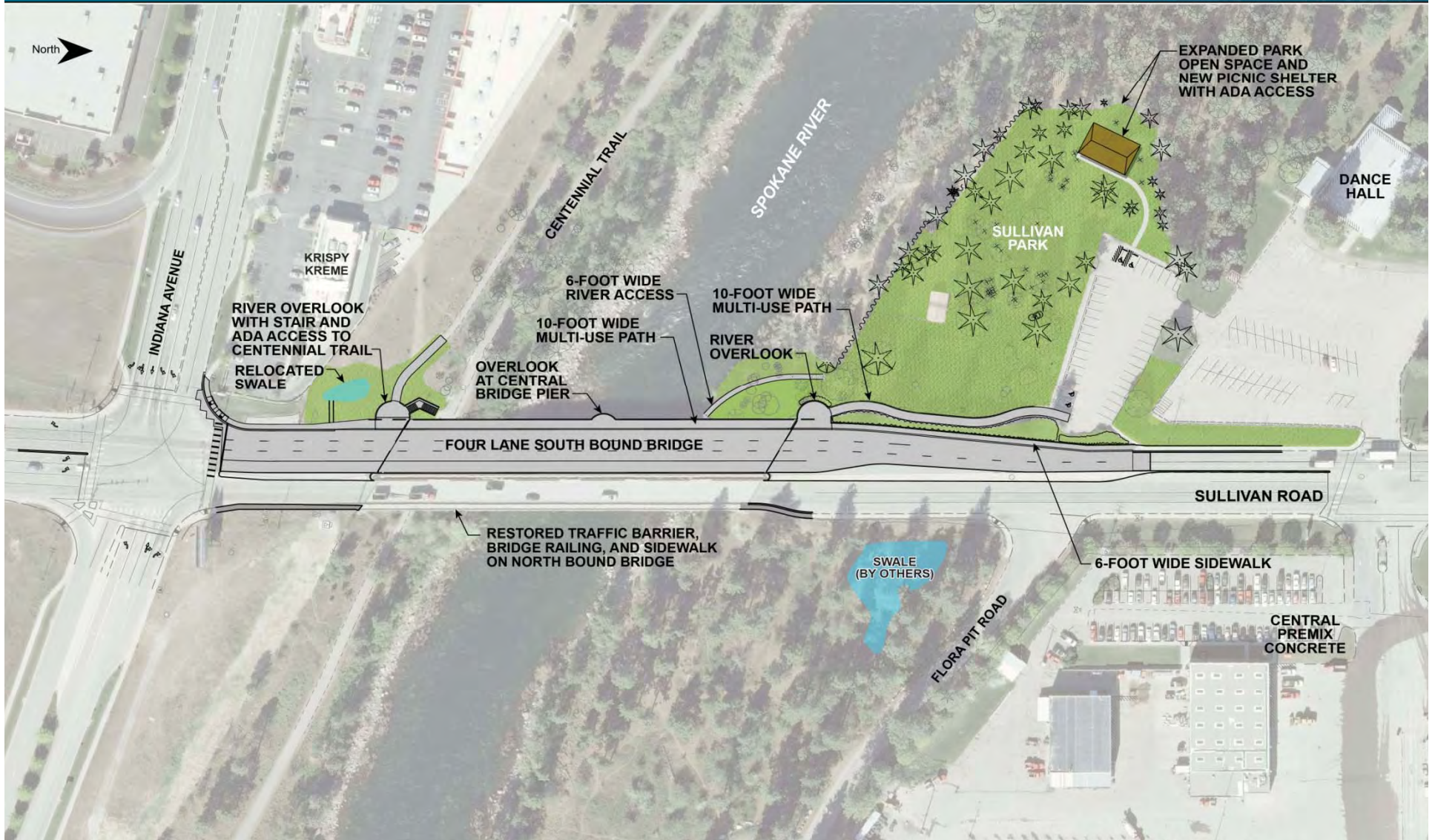
Sullivan Road West Bridge Replacement Project Goals & Objectives

- Primary Goal:
 - Replace existing 2-lane southbound bridge with a 4-lane structure.
- Key Objectives:
 - Maintain acceptable traffic flow during construction
 - Maintain access to local businesses
 - Maintain access to Centennial Trail, Sullivan Park
 - Maintain access to river users
 - Bridge construction anticipated to begin in late 2013 or spring 2014

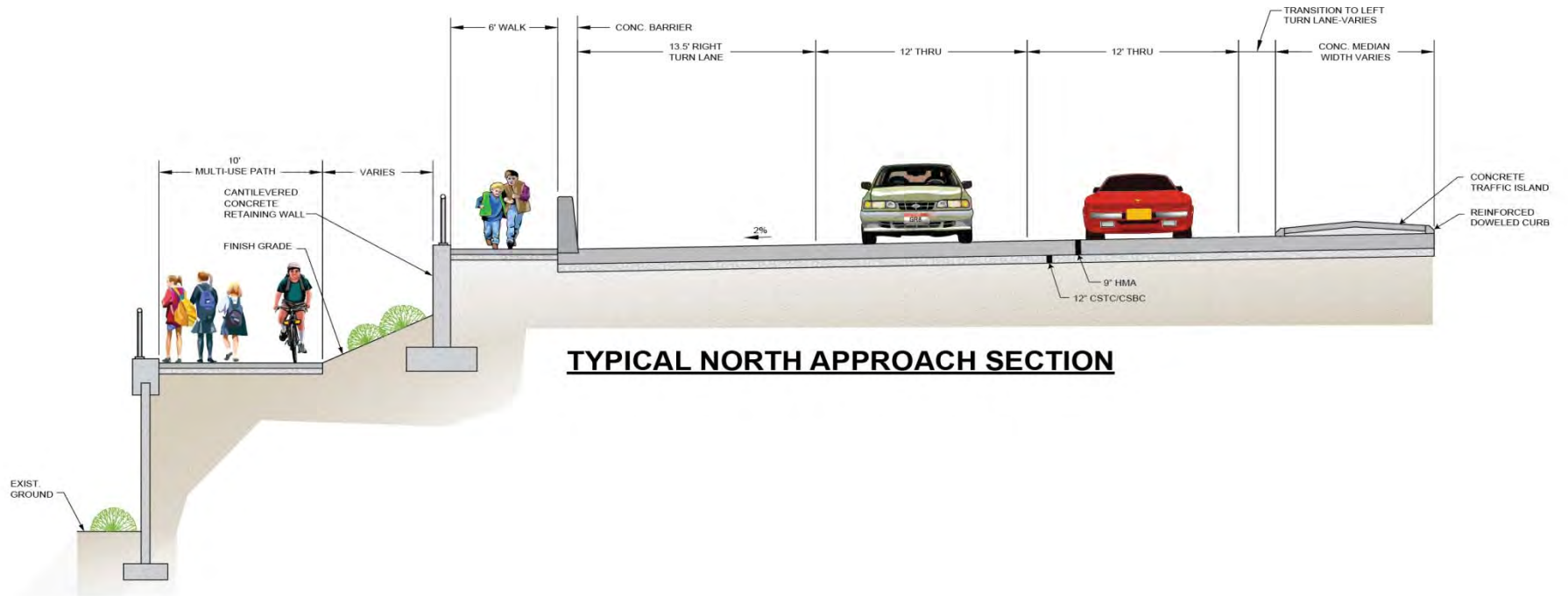
Design Progress Update - Environmental Documentation

- NEPA Documentation
 - Section 106 Cultural Resources
 - Section 4(f) Impacts to Public Lands – “de minimis” determination
 - Biological Evaluation
 - Noise Analysis
 - Hazardous Materials
 - Wetlands
 - Sole Source Aquifer Checklist
- SEPA Checklist
- Joint Aquatic Resources Permit Application (JARPA)
 - State Hydraulic Project Approval (HPA)
 - City Shoreline Substantial Development Permit
 - Floodplain Management Permit
 - Section 401 State Water Quality Certification
 - Section 404 Corps of Engineers Permit

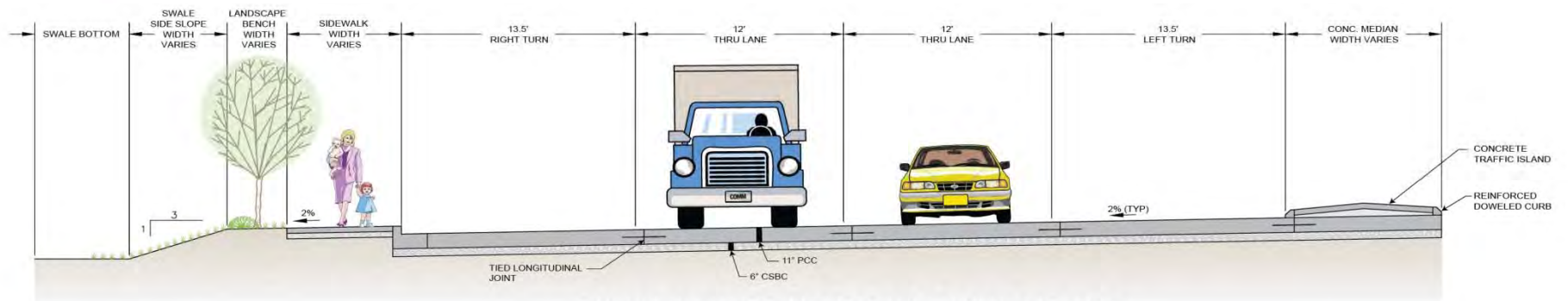
Design Progress Update - Project Features



Design Progress Update - Project Features

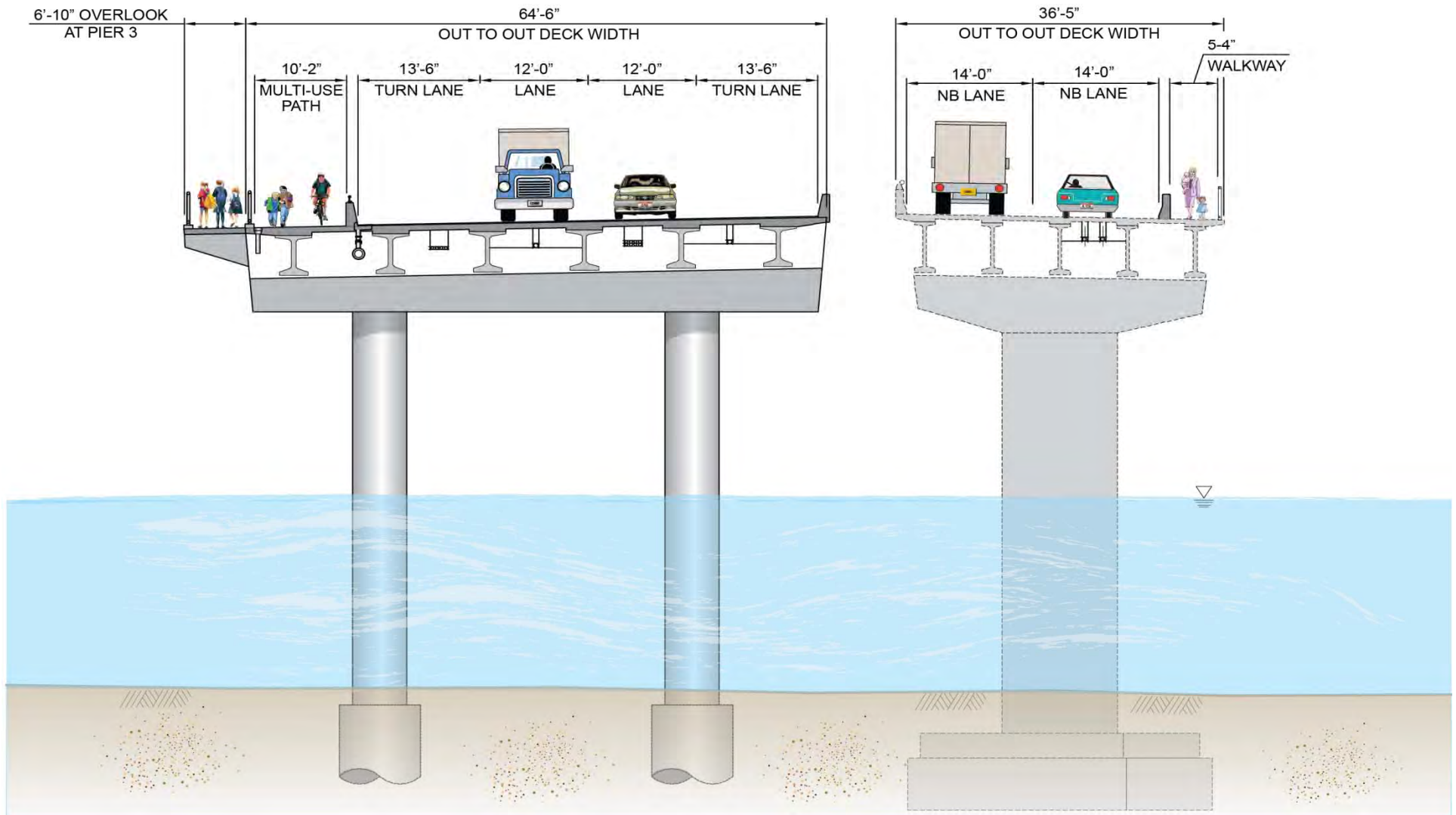


TYPICAL NORTH APPROACH SECTION

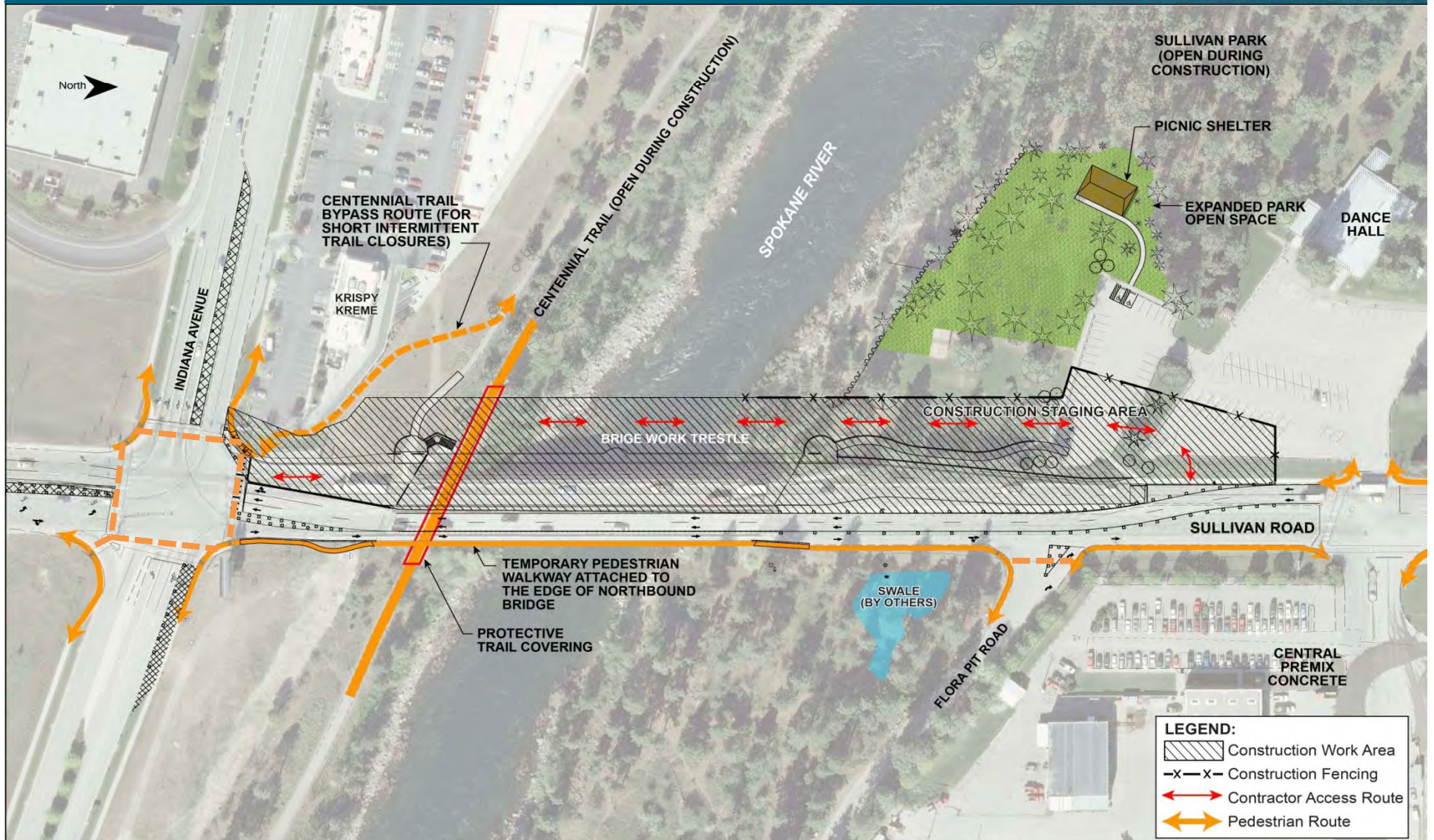


TYPICAL SOUTH APPROACH SECTION

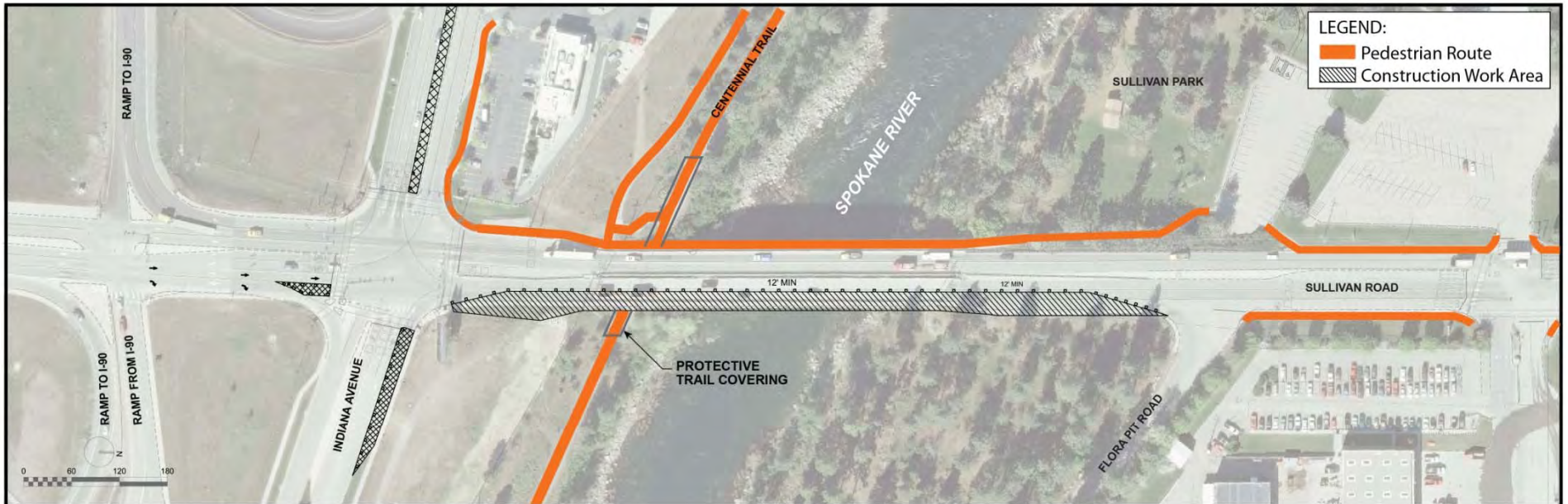
Design Progress Update - Project Features



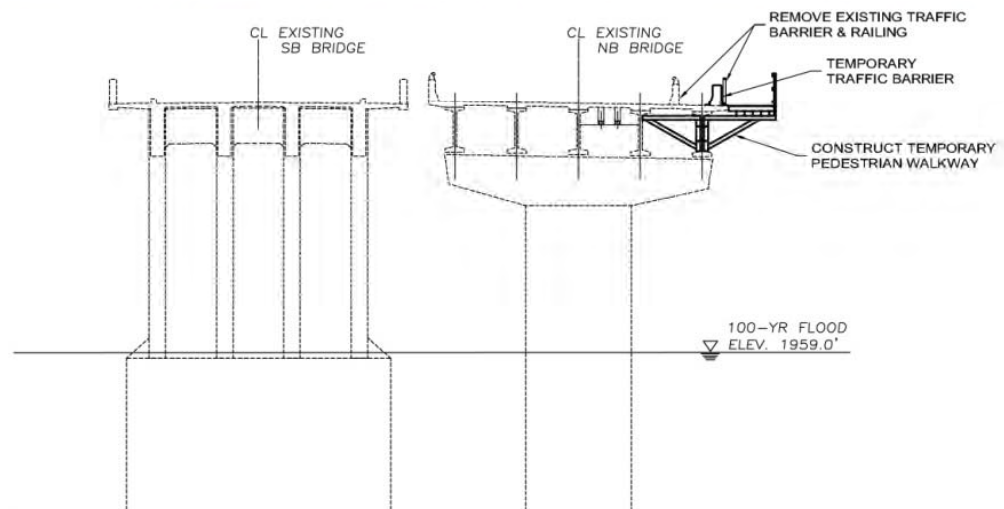
Design Progress Update - Potential Impacts During Construction



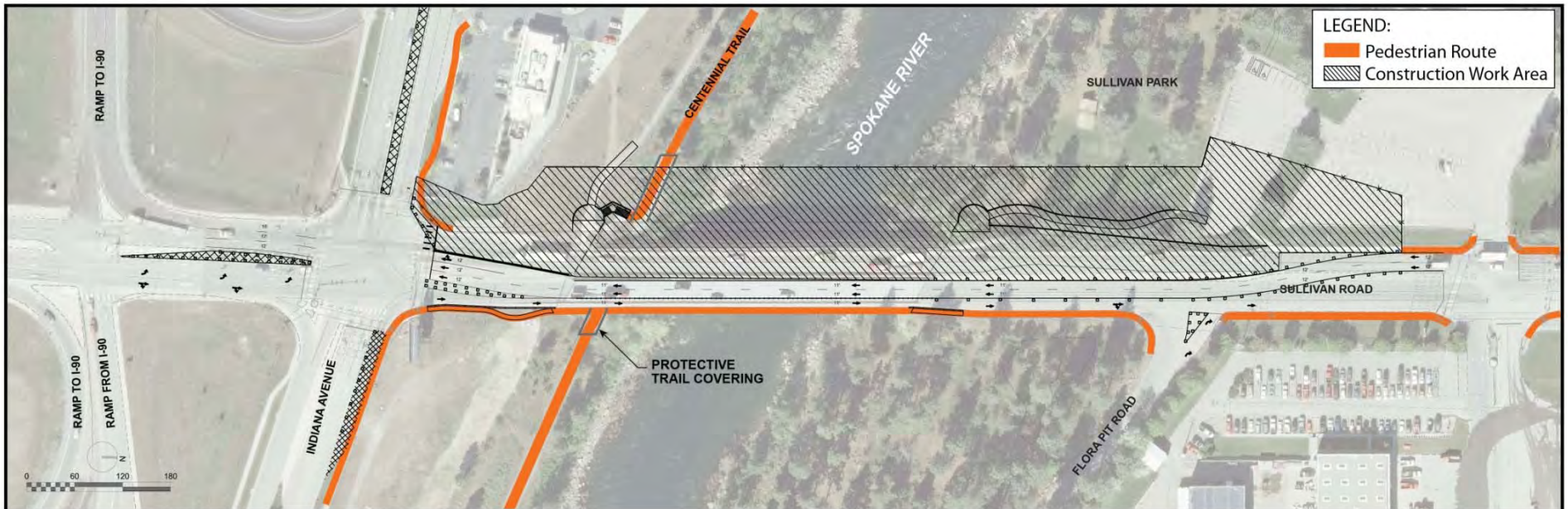
Design Progress Update - Potential Impacts During Construction



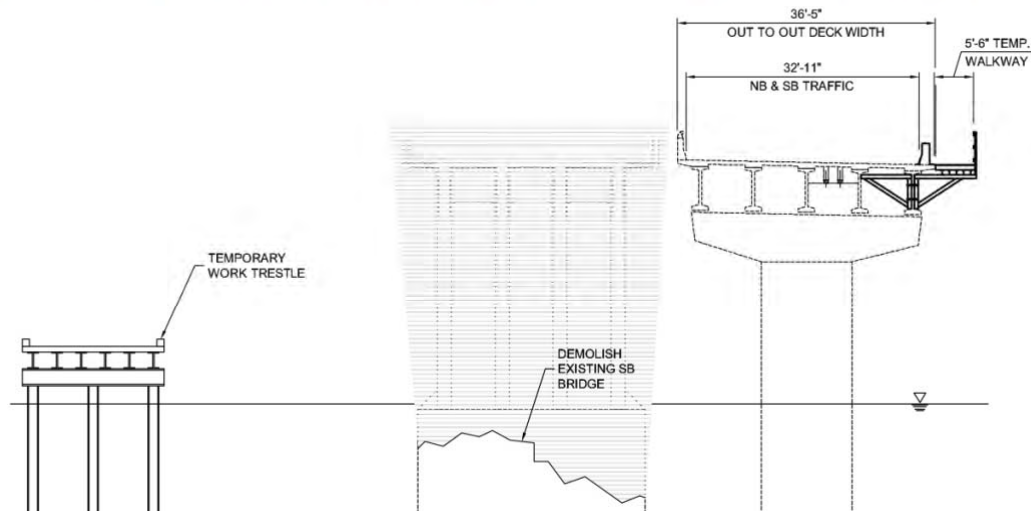
TRAFFIC STAGING – PHASE 1



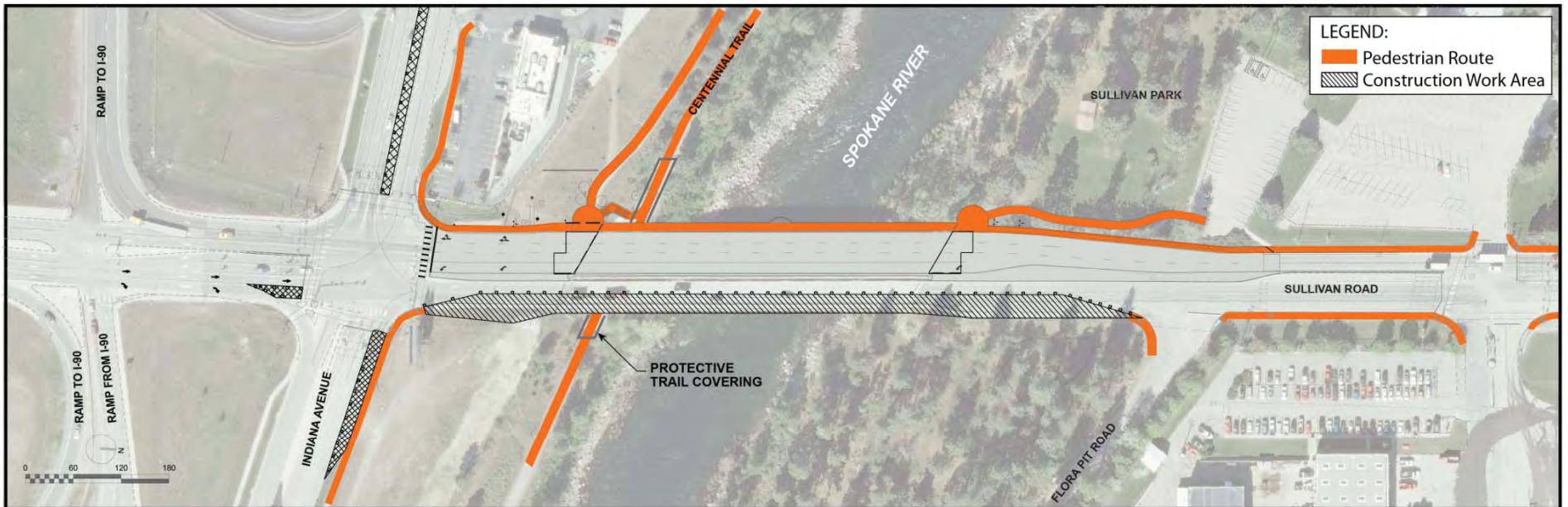
Design Progress Update - Potential Impacts During Construction



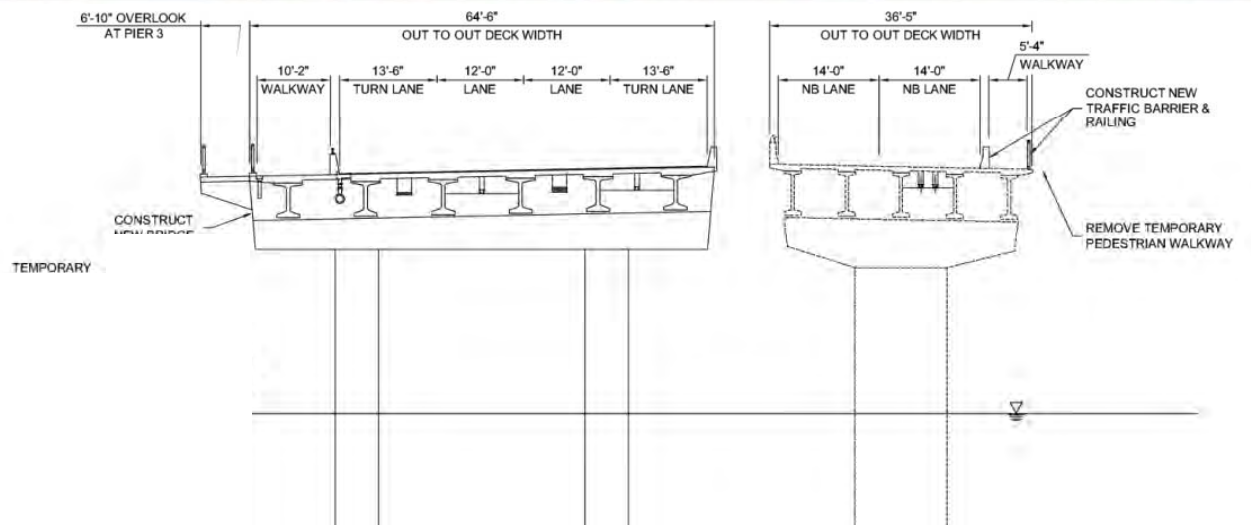
TRAFFIC STAGING - PHASES 2,3,4

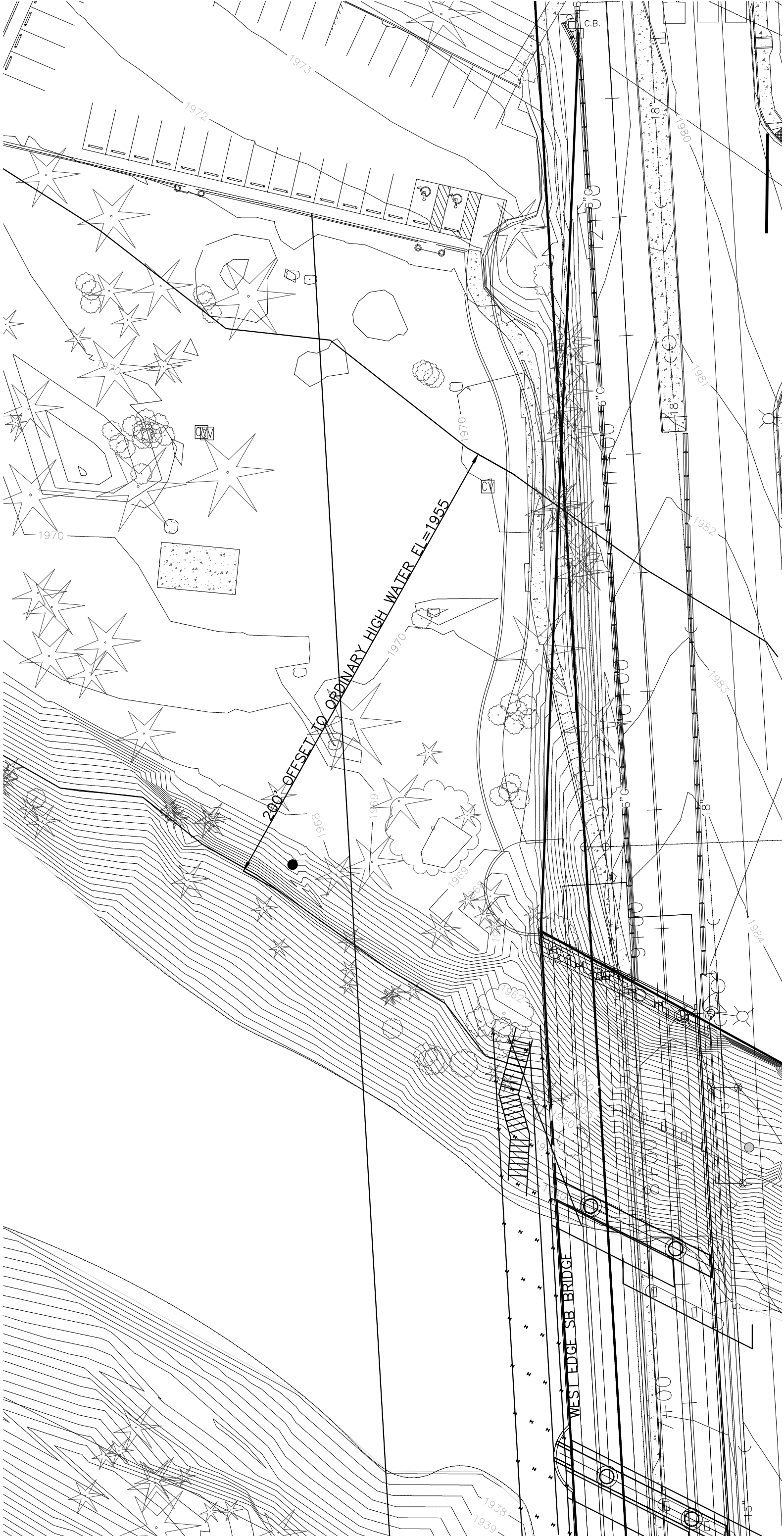


Design Progress Update - Potential Impacts During Construction



TRAFFIC STAGING – PHASE 5









Existing Condition

Viewpoint: From Above Spokane River Looking Southeast



Visual Simulation of Completed Project

Viewpoint: From Above Spokane River Looking Southeast



Existing Condition

Viewpoint: From Above Sullivan Road at Indiana Ave Looking Northwest



Visual Simulation of Completed Project

Viewpoint: From Above Sullivan Road at Indiana Ave Looking Northwest



Existing Condition

Viewpoint: From Above Sullivan Park Looking Southeast



Visual Simulation of Completed Project

Viewpoint: From Above Sullivan Park Looking Southeast



Project Funding Update

- Preliminary Project Estimate
 - \$19.8 Million
- Funding Obtained to Date
 - \$8.0 Million (Federal Bridge Replacement Funds)
 - \$2.0 Million (Freight Mobility Strategic Investment Board)
 - \$2.3 Million (City of Spokane Valley)
 - \$3.5 Million (Transportation Improvement Board)
 - \$15.8 Million
- Remaining Funding Needed
 - \$4.0 Million
- We Need Your Help!

Upcoming Sullivan Corridor Projects

Sullivan Park Improvements (Related to Bridge Project)

Scope

- Clearing
- U/G Irrigation System
- Picnic Shelter
- Sod / Seeding

Impacts

- Parking
- Grassed Area
- Shelters
- River Access

Construction Period

August / Sept. 2013



Upcoming Sullivan Corridor Projects

Sullivan Rd Pavement Preservation

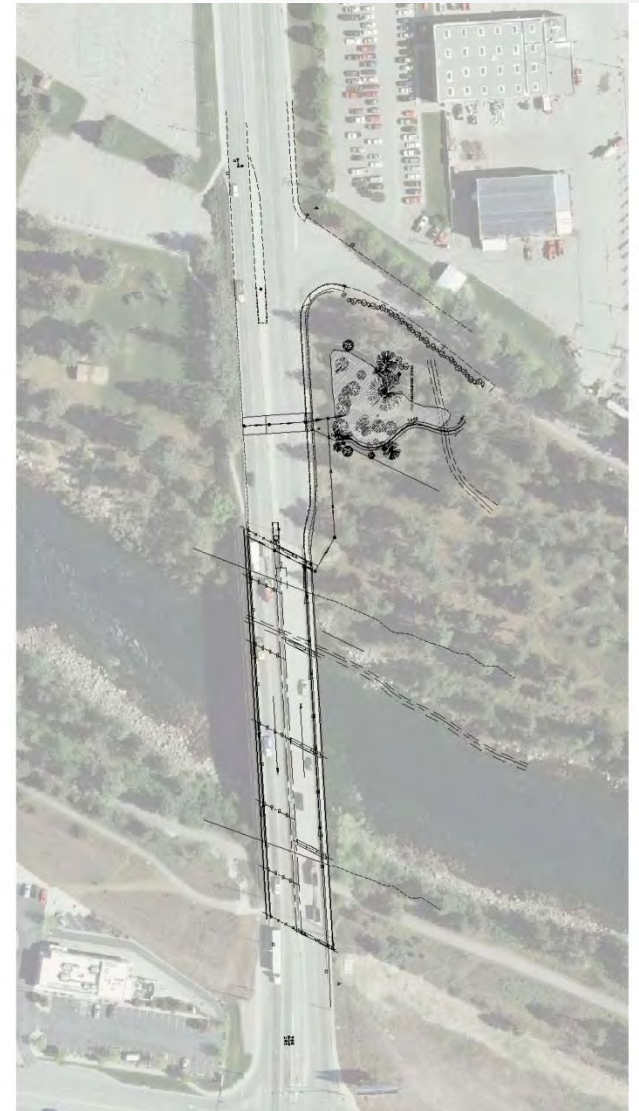
- Scope of Work
 - Grind and Overlay Hot Mix Asphalt
 - Storm Water Renovations
 - ADA Pedestrian Ramp work
 - Signal Work
- Temporary Traffic Control
 - Work done in 4 phases
 - » Center Storm Drain Work
 - » SB Lanes / West Side
 - » NB Lanes / East Side
 - » BNSF Bridge Approach (Near Trent)
- Construction Period
 - April and May 2013



Upcoming Sullivan Corridor Projects

Sullivan Bridge Drain Retrofit

- NB Bridge Work
 - Piping under deck
 - Storm Drain System
 - Swale Berm
- SB Bridge Work (Tentative)
 - Block Scuppers
 - Piping under deck
 - Connect to Storm Drain System
- Traffic Control
 - Reduce lanes to one each way
 - 20 to 25 days in June and July





Questions?



CH2MHILL®