

THE LANDS COUNCIL PRESENTS...



Boots to the Ground

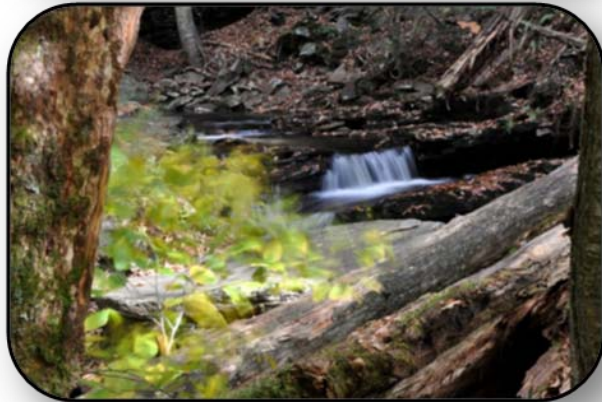
Non-point source reduction through riparian restoration

WHO IS THE LANDS COUNCIL?



Environmental Non-Profit
Spokane, WA

We preserve and revitalize Inland Northwest forests, water, and wildlife through advocacy, education, effective action, and community engagement.



We collaborate with a broad range of interested parties to seek smart and mutually respectful solutions to environment and health issues.

RIPARIAN HABITAT ENHANCEMENT

2007 - 2013

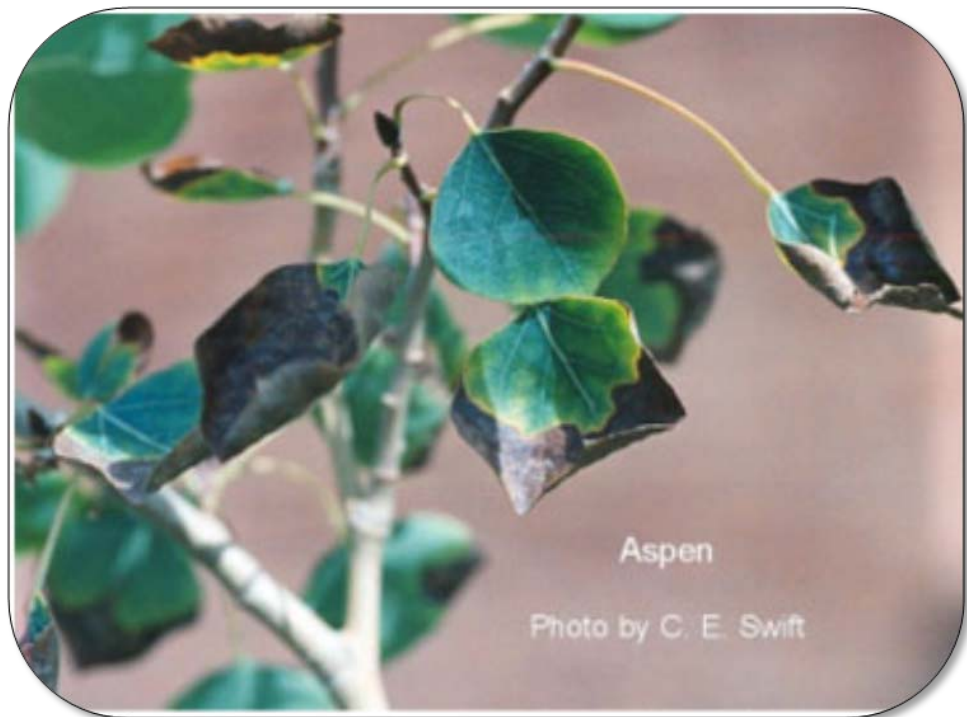
- Started with 2 plantings per year: Champion Park and Peoples' Park
- Today, over 10 restoration sites in Spokane River Watershed
- Remaining constant: VOLUNTEERS!



RIPARIAN HABITAT ENHANCEMENT

Lessons from early-on:

- Initial survival rates low and seasonally-dependent
- Water over summer = extremely important
- Spring v. fall: both have pros and cons



SOURCE MATERIALS



GET READY, HERE COMES THE TREE & SHRUB SEEDLING SALE!

January 1, 2013 we start taking orders for the Annual Tree & Shrub Seedling Sale. Order deadline is March 15th, 2013.



SPokane CONSERVATION DISTRICT

TREE & SHRUB SEEDLING SALE

CLICK HERE TO ORDER

Spokane Conservation District Tree Sale



Locally-harvested native willow

BACKYARD NURSERY



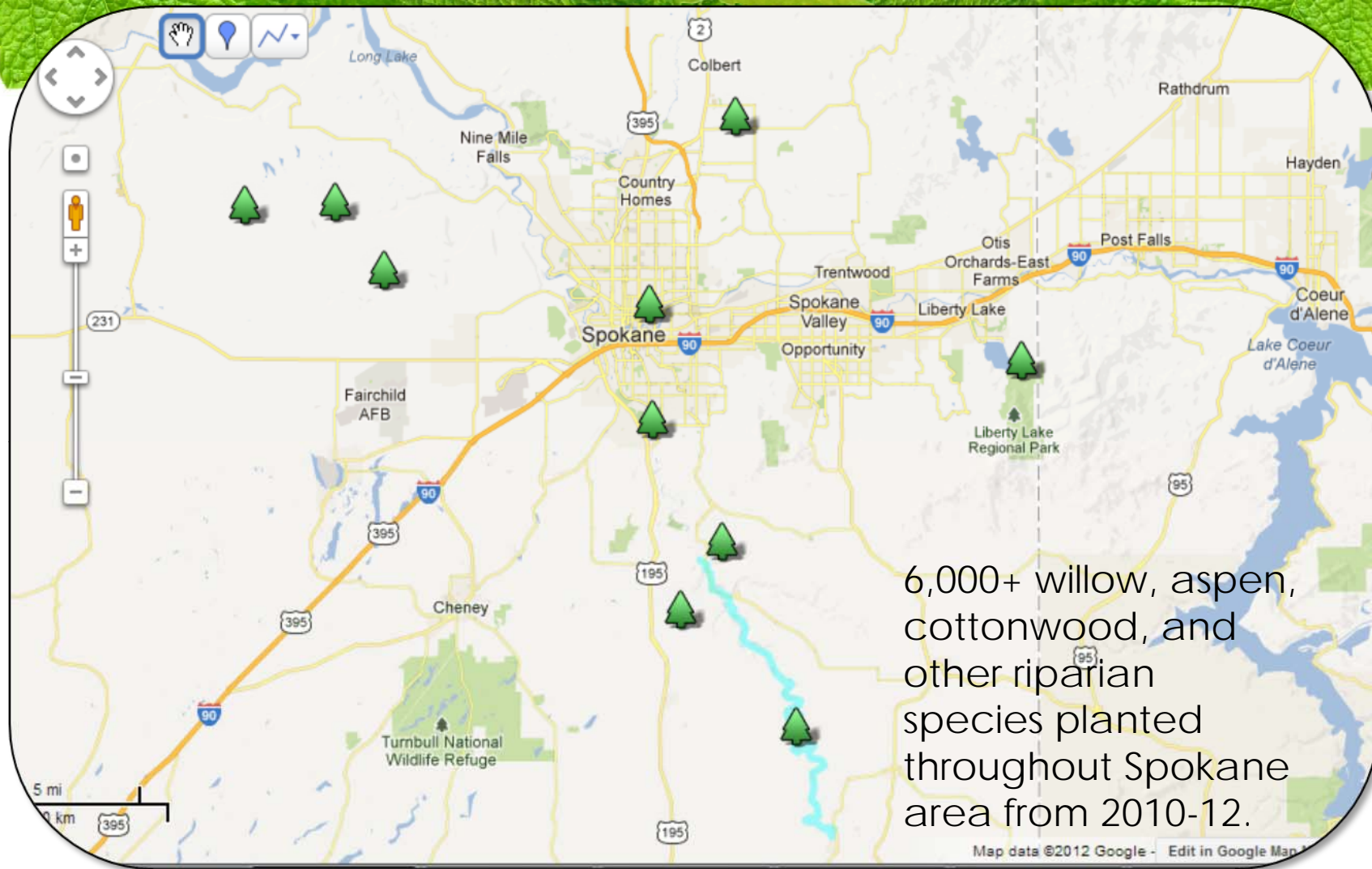
THE LANDS COUNCIL

25 W. MAIN, STE 222

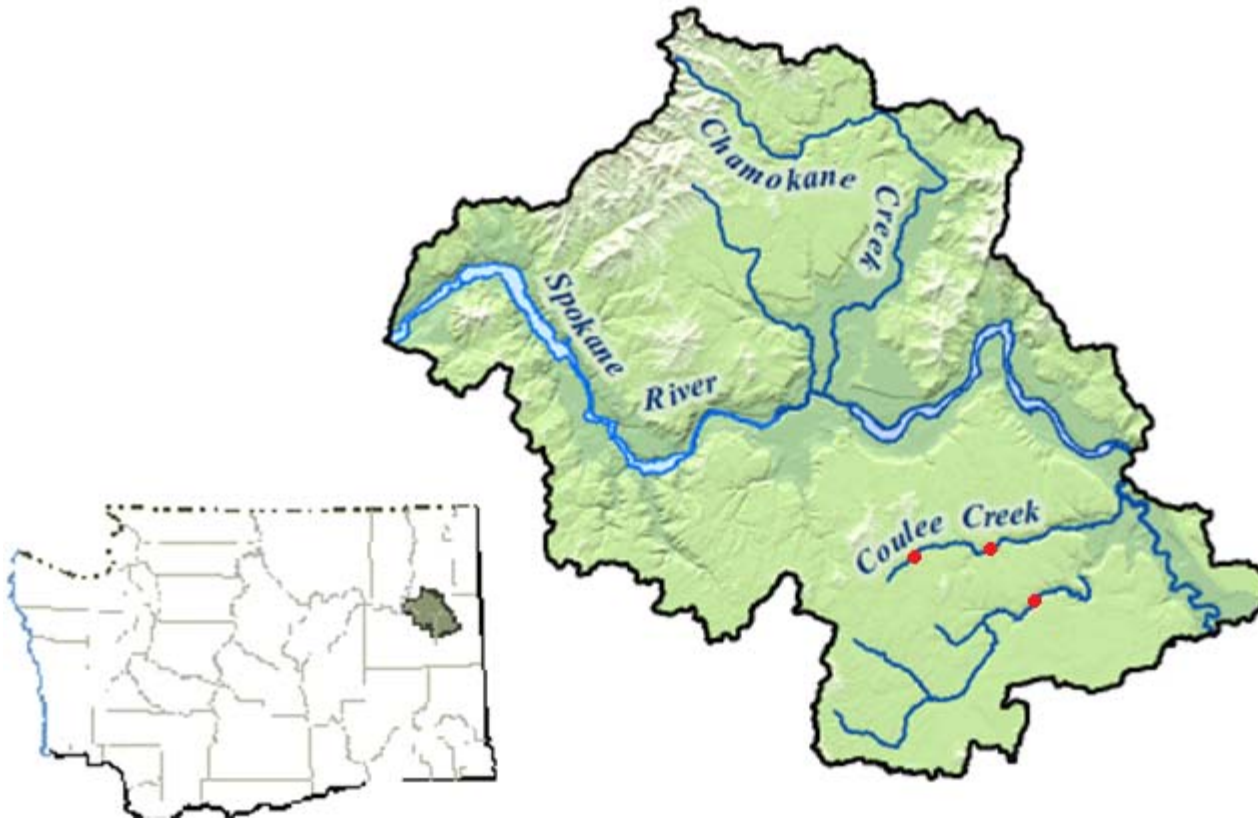
SPOKANE, WA 99201

(509) 209-2851

WWW.LANDSCOUNCIL.ORG



WRIA 54 SITES





THE LANDS COUNCIL

25 W. MAIN, STE 222

SPOKANE, WA 99201

(509) 209-2851

WWW.LANDSCOUNCIL.ORG

WRIA 56 SITES





THE LANDS COUNCIL

25 W. MAIN, STE 222

SPOKANE, WA 99201

(509) 209-2851

WWW.LANDSCOUNCIL.ORG

BEAVER MANAGEMENT



Goal: keep existing beaver populations where they are
Strategies: mitigate damage caused to roads and private land
Case study: S Boyles et al. *An analysis of the efficacy and comparative costs of using flow devices to resolve conflicts in beavers along roadways in the Coastal Plain of Virginia, 2008.* Transportation dept. saved \$8.37 for every \$1.00 spent to install, monitor, and maintain flow devices



THE LANDS COUNCIL

25 W. MAIN, STE 222

SPOKANE, WA 99201

(509) 209-2851

WWW.LANDSCOUNCIL.ORG



THE LANDS COUNCIL

25 W. MAIN, STE 222

SPOKANE, WA 99201

(509) 209-2851

WWW.LANDSCOUNCIL.ORG

CONCLUSIONS

- Thorough, targeted outreach to find landowners
- Managing beaver/landowner conflict keeps wetlands in place
- Re-vegetating denuded riparian buffers requires year-round maintenance initially



Questions?

Contact **Amanda Parrish**

Watershed Programs Director

(509) 209-2408

aparrish@landscouncil.org

www.landscouncil.org