

The background features a light blue to medium blue gradient. Scattered across the top and bottom edges are several realistic water droplets of various sizes, some with highlights and shadows, giving a fresh and clean aesthetic.

STORMWATER EROSION EDUCATION PROGRAM

SEEP





City of Coeur d'Alene MS4 Stormwater Utilities Map

Description: Clear of Area Storm Water Features

Legend

- Storm Water Features**
- Canal
 - Checkdam
 - Swathes
 - Stone Pile
 - PS-Cell Barrier

Boundaries and Public Features

- Streets & Closes
- Lakes & Rivers
- Clear of Area
- Public Property
- Buildings

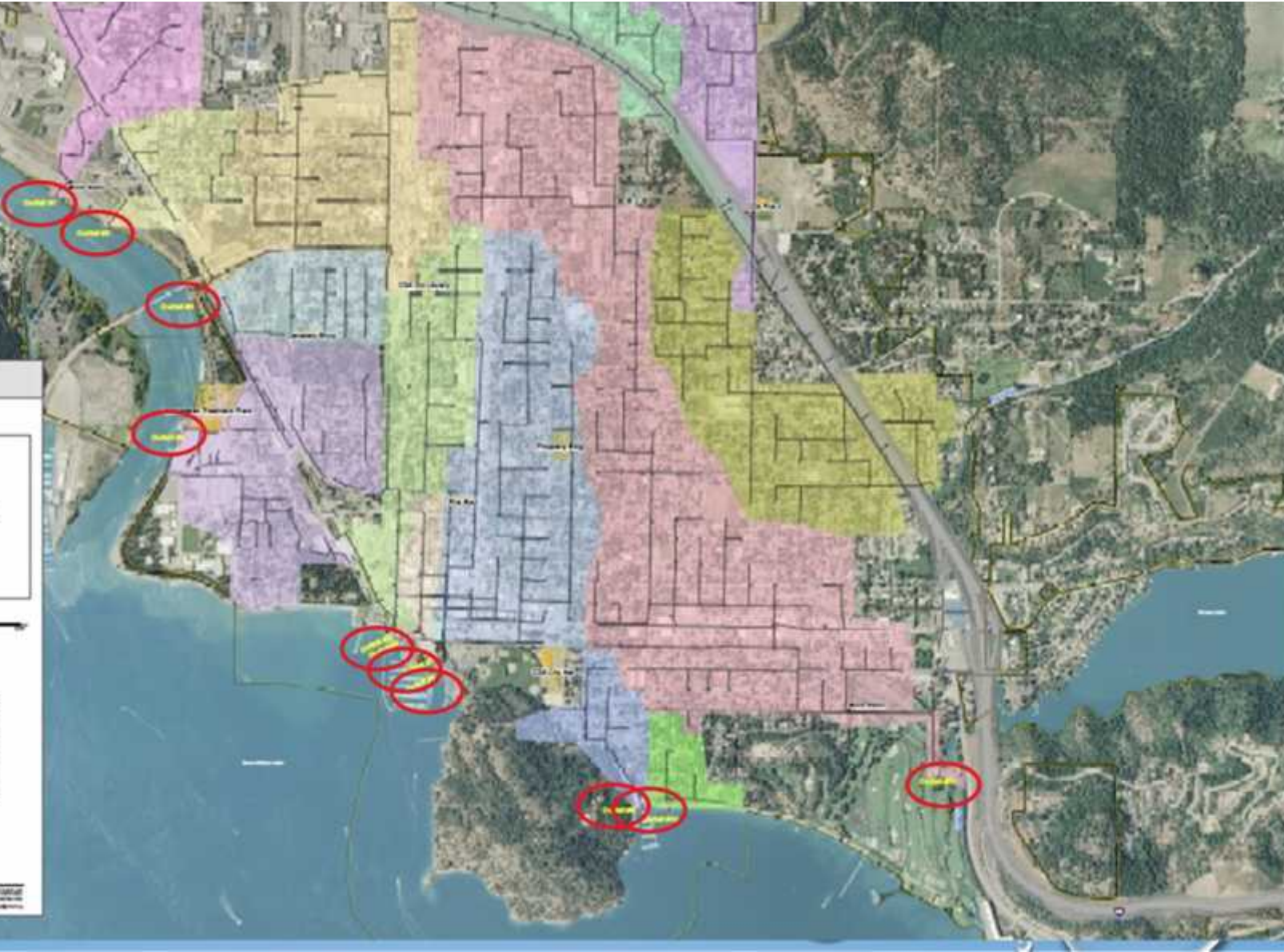


1 Inch = 500 Feet
1:500

Outlet Inventory

Outlet ID	Location	Structure	Material	Condition	Notes
1
2
3
4
5
6
7
8
9
10
11
12
13
14
15
16
17
18
19
20

Map Date: 10/20/2024
 City of Coeur d'Alene
 Planning & Development Department
 1000 W. Lakeshore Blvd.
 Coeur d'Alene, ID 83814
 Phone: (208) 765-3000
 Fax: (208) 765-3001
 Email: info@coeurdalene.gov
 Website: www.coeurdalene.gov



Stormwater Education



3rd Street Boat Launch



Sanders Beach

WHERE DOES STORMWATER GO?



The background is a light blue gradient that transitions from a pale blue at the top to a slightly darker blue at the bottom. Scattered throughout the background are several realistic water droplets of various sizes, some with highlights and shadows, giving them a three-dimensional appearance. The droplets are most concentrated in the top-left and bottom-right corners.

EROSION CONTROL IS PROFIT

THE BEGINNING

- **SEEP BEGAN IN 2004-05**
- **TOM FREEMAN**
- **ANNETT DUEROCK**
- **MEL COLLER**

THE BEGINNING CONTINUED

- 2004-2005 MEETING WITH AGENCIES AND CONTRACTORS
- RECEIVED GRANT TO ESTABLISH TEACHING CONTENT
- DEVELOPED OWN CLASSROOM MATERIALS
- FIVE NORTHERN COUNTIES OF IDAHO
- NON-PROFIT WITH SEVEN MEMBER BOARD

ADMINISTRATIVE HOUSE

- BEGAN AT PANHANDLE AREA COUNCIL
- MOVED TO UNIVERSITY OF IDAHO IN 2013
- SHARED EMPLOYEE-MARIE PENGELLY
- CLASS-ROOMS AND STORAGE
- BOOK KEEPING AND PERSONNEL RECORDS
- ADVERTISING, SCHEDULING AND PRINTING

EDUCATION

- EDUCATION IS OUR ONLY RESPONSIBILITY
- WE ARE NOT REGULATORS, OR ENFORCERS
- WE ARE A NON-PROFIT ORGANIZATION NOT CONNECTED TO ANY AGENCY

EDUCATION BASIC CLASS

- 2-DAY COURSE
- CLASSROOM 12 HOURS
- FIELD 4 HOURS











BMP Categories

- 1. Planning
- 2. Storm Control
- 3. Erosion Control
- 4. Sediment Control
- 5. Nutrient Control
- 6. Detention BMPs

















EDUCATION

- RECEIVE CERTIFICATION GOOD FOR THREE YEARS
- CERTIFICATE IS NEEDED TO WORK IN MANY JURISDICTIONS

RECERTIFICATION

- AFTER THREE YEARS MUST RECERTIFY
- MANY WAYS TO DO THIS, SUCH AS ATTENDING THIS CONFERENCE
- IN 2015 BEGAN ONE DAY RECERTIFICATION CLASS
- VERY POPULAR
- MUCH MORE TECHNICAL

EDUCATION

- 660 INDIVIDUALS HAVE COMPLETED BASIC TRAINING
- REACH BETWEEN 65 AND 175 STUDENTS A YEAR
- THIS DOES NOT COUNT RECERTIFICATION
- MANY HAVE BEEN RECERTIFIED TWICE

FUTURE PLANS FOR SEEP

- IN PROCESS OF GETTING WASHINGTON CERTIFICATION TO TEACH CESCL CLASSES
- PLAN TO EXPAND TO MOSCOW-LEWISTON AREA

Get SEEP Certified in Erosion Control



2016 SEEP Schedule

Basic Classes:

Coeur d'Alene	April 6-7
Kellogg	April 13-14
Sagle	April 20-21
Plummer	April 27-28
Coeur d'Alene	May 3-4

Level II Class:

Sagle	April 19
-------	----------

SEEP Basic Class:

- Hands-on training
- Day one: classroom session and field session
- Day two: classroom session and certification exam
- Cost: \$250 (lunch and materials provided)
- Topics covered: Site Planning, Regulations, Water Quality, BMPs

SEEP Level II Class:

- Renew your current SEEP certification
- One day classroom session
- Cost: \$150 (lunch and materials provided)
- Topics covered: Stormwater and Advanced BMPs

*Move dirt?
Take SEEP!*

Register Now!

www.PanhandleSEEP.org

208-292-2540

