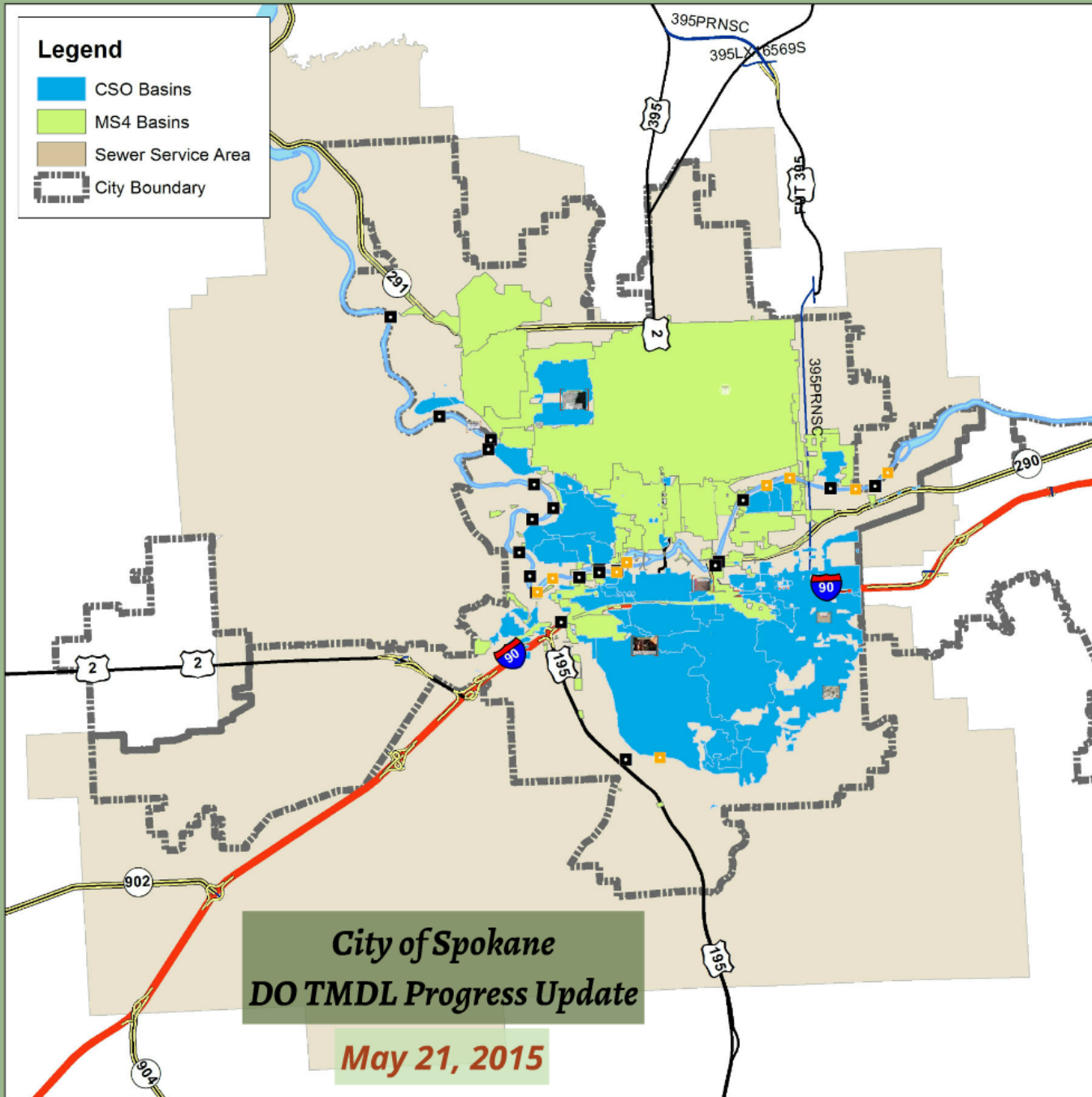


*City of Spokane*  
***DO TMDL Progress Update***

***May 21, 2015***



# Riverside Park Water Reclamation Facility



All design and construction work was completed by the end of 2010.



### General Electric

Immersed in open tanks



OR

### Pall

Enclosed pressurized canisters



### NLT Design and Construction

- Anticipate pilot testing a drum screen
- Engineering firm under contract (ch2m)

# *General Electric*

Immersed in open tanks



On

*Pall*

Enclosed pressurized canisters



OR

# ***NLT Design and Construction***

- Anticipate pilot testing a drum screen
- Engineering firm under contract (ch2m)
- Select membrane and initiate pre-purchase activities
- Select GC/CM construction contractor



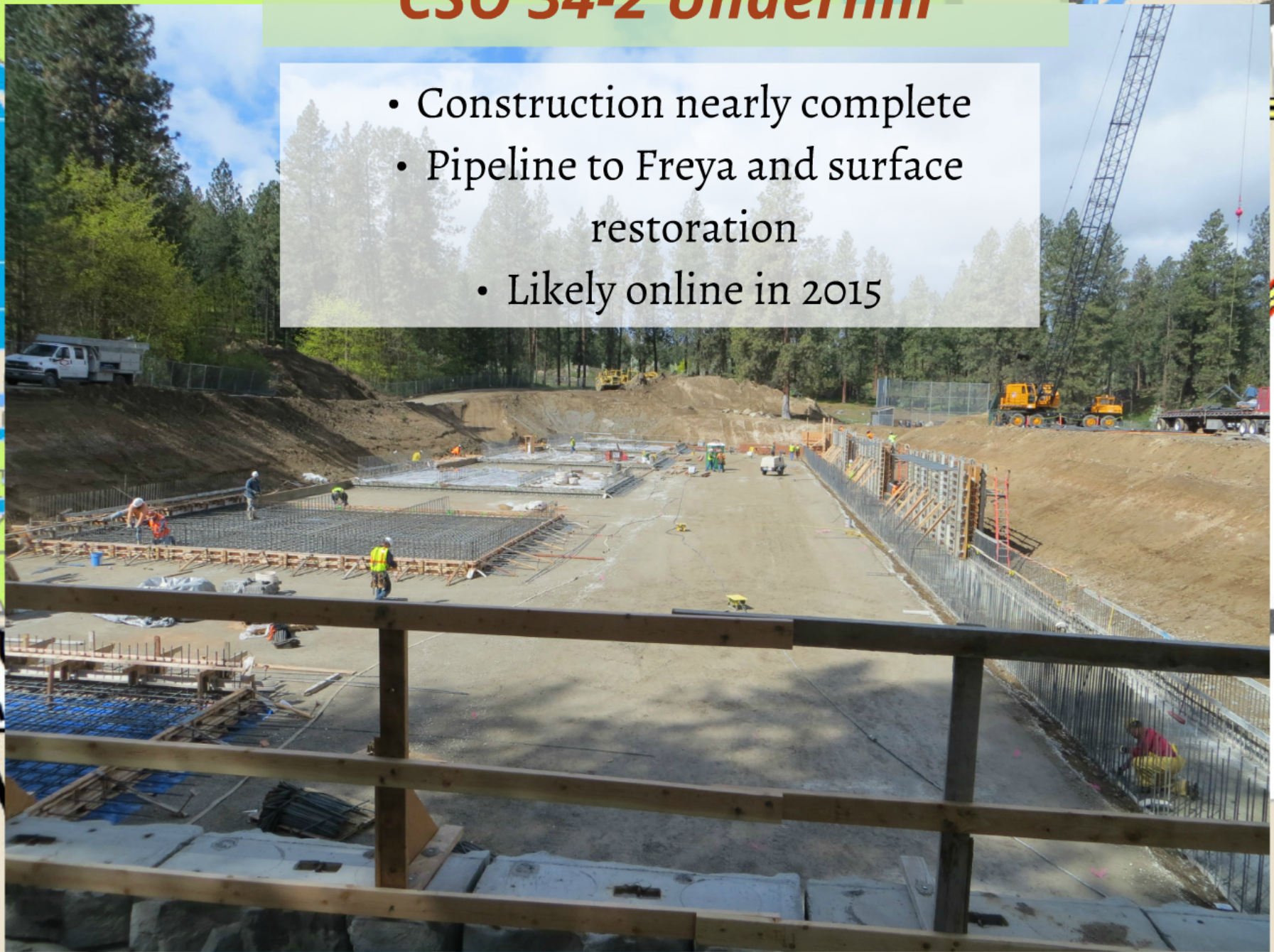
## *CSO 34-3 Ray Street*



- In operation (punch lists)
- Operating as expected

## CSO 34-2 Underhill

- Construction nearly complete
- Pipeline to Freya and surface restoration
- Likely online in 2015



## *CSO 33-2 Sprague Ave*

- Tank excavation complete
- Pipe excavation in progress



## CSO 06 Northwest Blvd

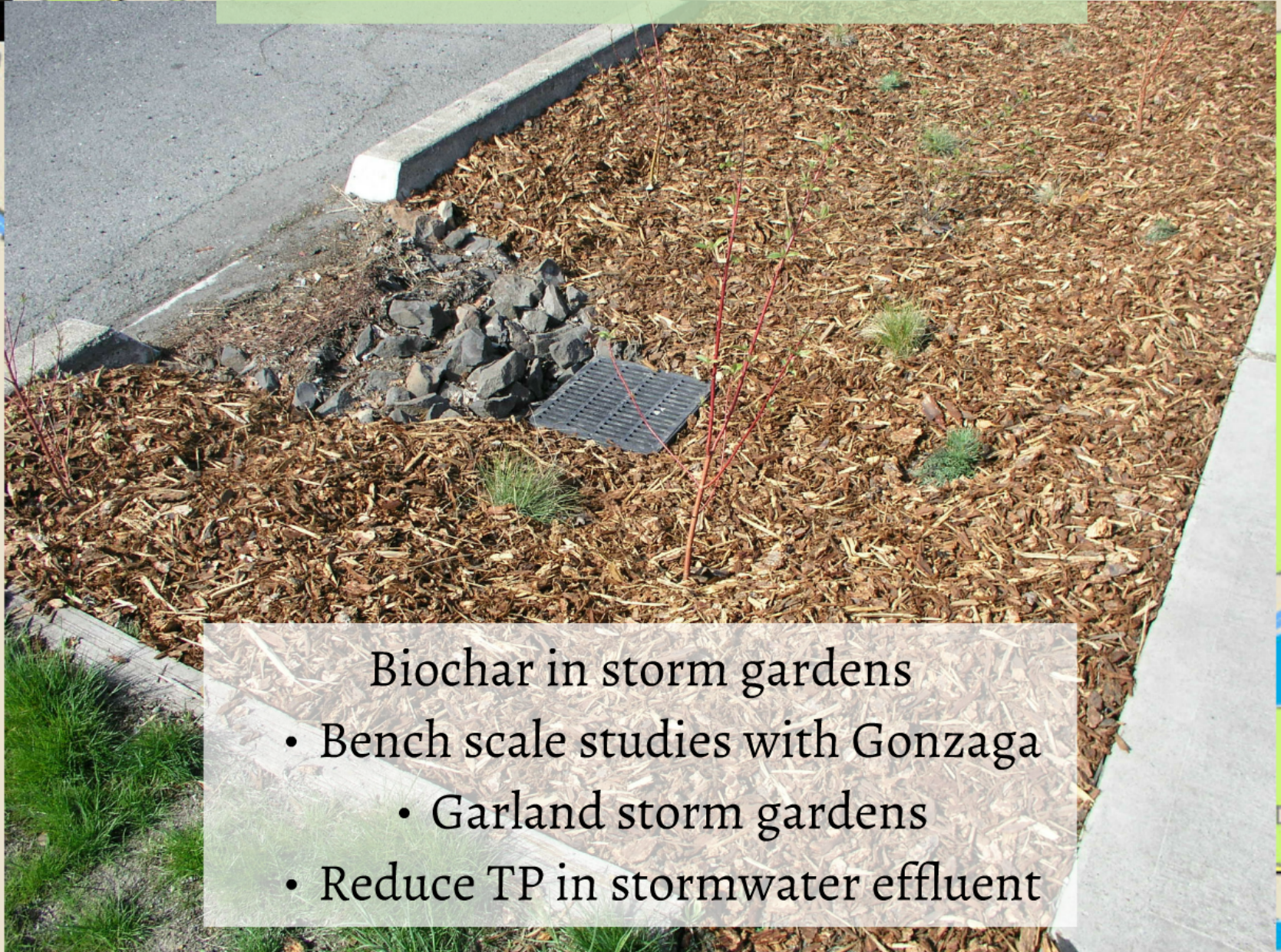


- Under construction
- About 1 year to completion

## *Other CSO Progress*

- CSO 20 (43rd/Garfield) to bid
- CSO 07 (Downriver area) and CSO 06 Phase 2: bid opens 6/1
- In design:
  - Io3 (TJ Meenach)
  - Io4 (Bosch lot near City Hall)
  - CSO 34-1
- Site Selection:
  - CSO 33-1 (3rd and Hamilton)
  - CSO 24 + 26 (downtown)
  - CSO 14-15 (GI)

# Stormwater Research



## Biochar in storm gardens

- Bench scale studies with Gonzaga
  - Garland storm gardens
- Reduce TP in stormwater effluent



## *Green Infrastructure*

- Reducing stormwater flows to CSO and MS4 system for all water and street projects
- Examples: High Drive - Havana - Monroe/Lincoln

