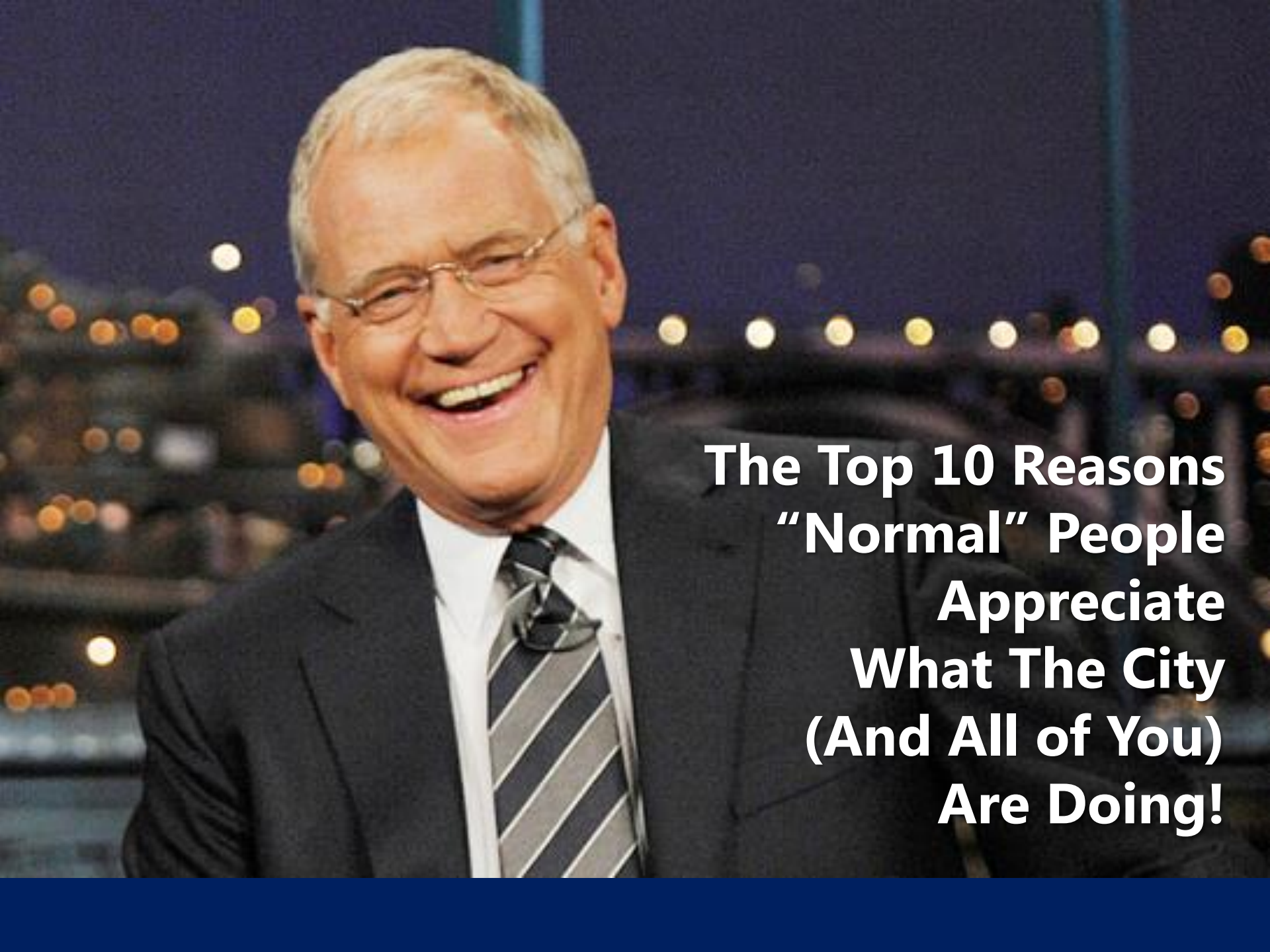


WASHINGTON WATER POWER

Greening the Spokane River

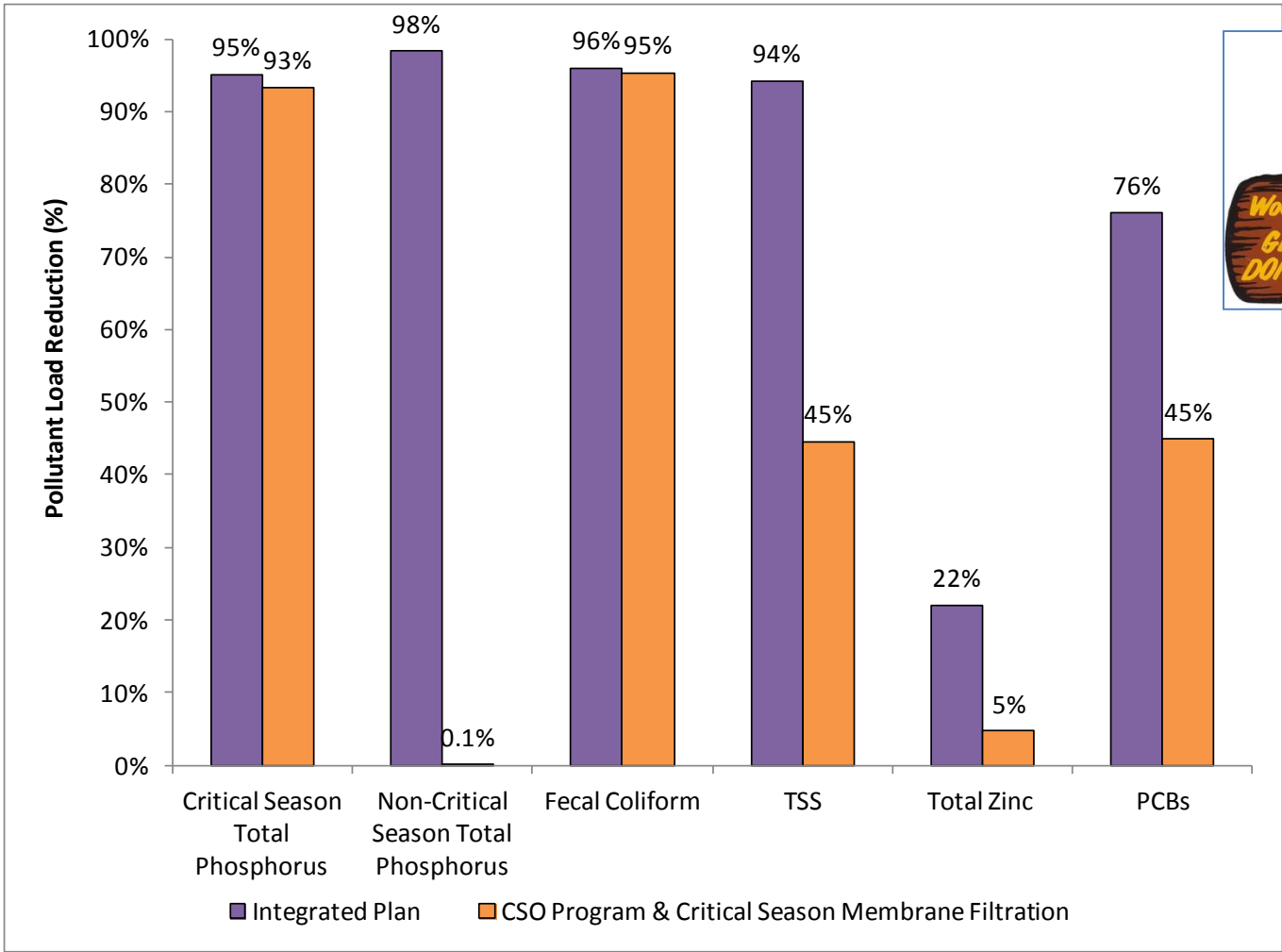
Marlene Feist
City of Spokane
May 2015





**The Top 10 Reasons
“Normal” People
Appreciate
What The City
(And All of You)
Are Doing!**

10. We Agree with Woodsy Owl.



City's Integrated Clean Water Plan provides significantly more pollutant removal than previous plans

9. We like Money in the Bank.

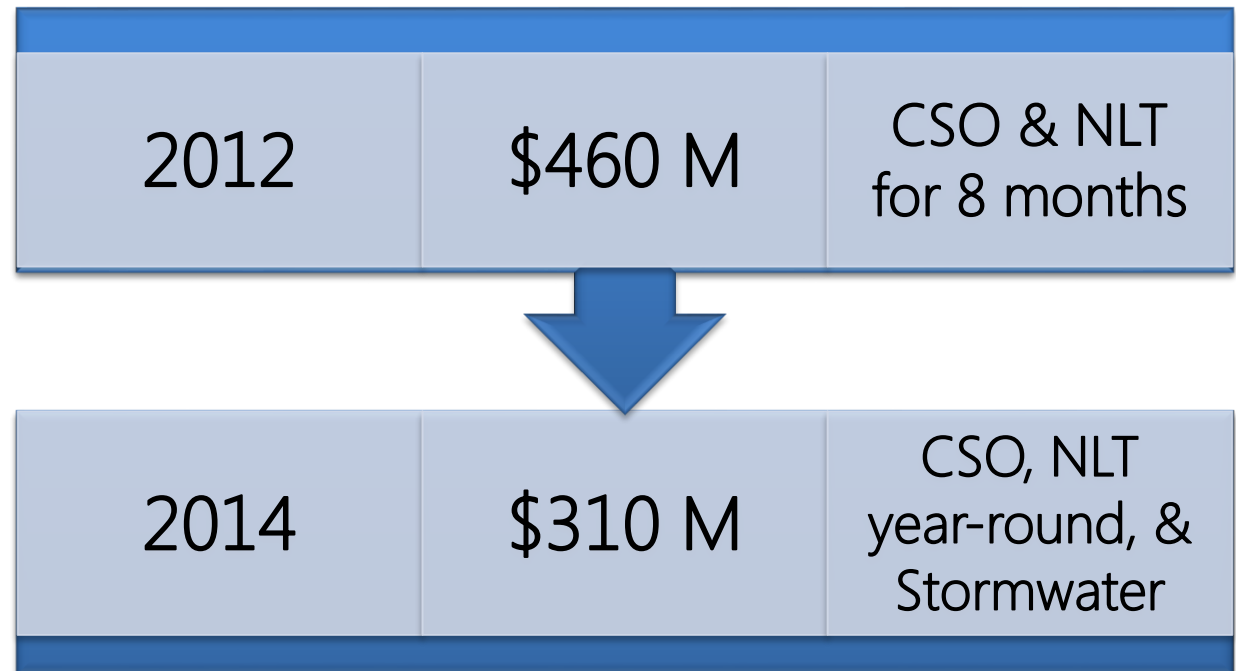
Affordability

- Utility Rate increases limited to inflation
- 2.9% annually
- New wastewater credit for low water users

Interest Rates

- Sold \$200 M in Green Bonds
- 3.08% rate

Integrated Clean Water Plan Results

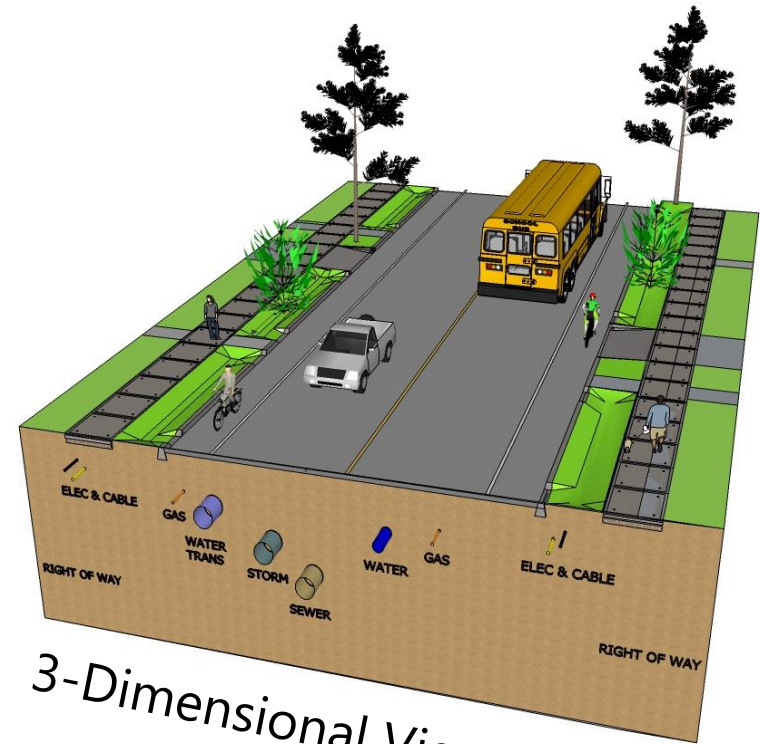


8. Above ground benefits are cool!



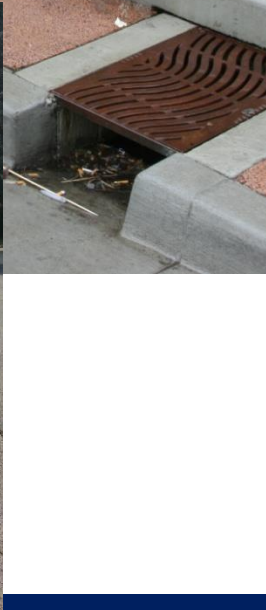
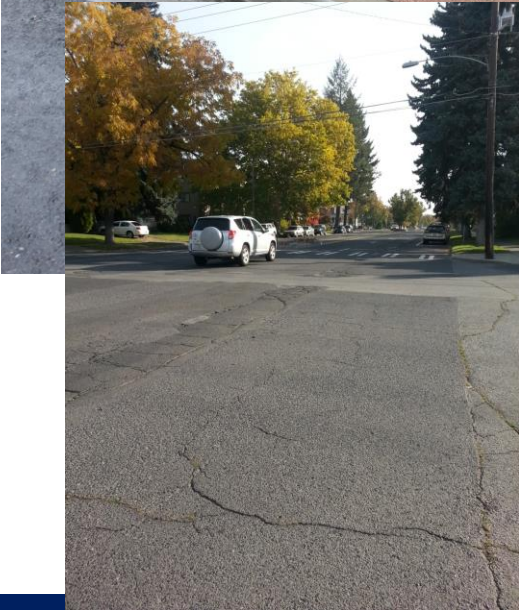
7. “Integrated” Streets deserve a big Thumbs Up!

- Nearly 78% of City voters approved our Street Levy in November
- Supports “Integrated” Streets
 - Considers all uses of the ROW
 - Promises to manage stormwater on site when we rebuild streets
 - Keeps flows out of the river!



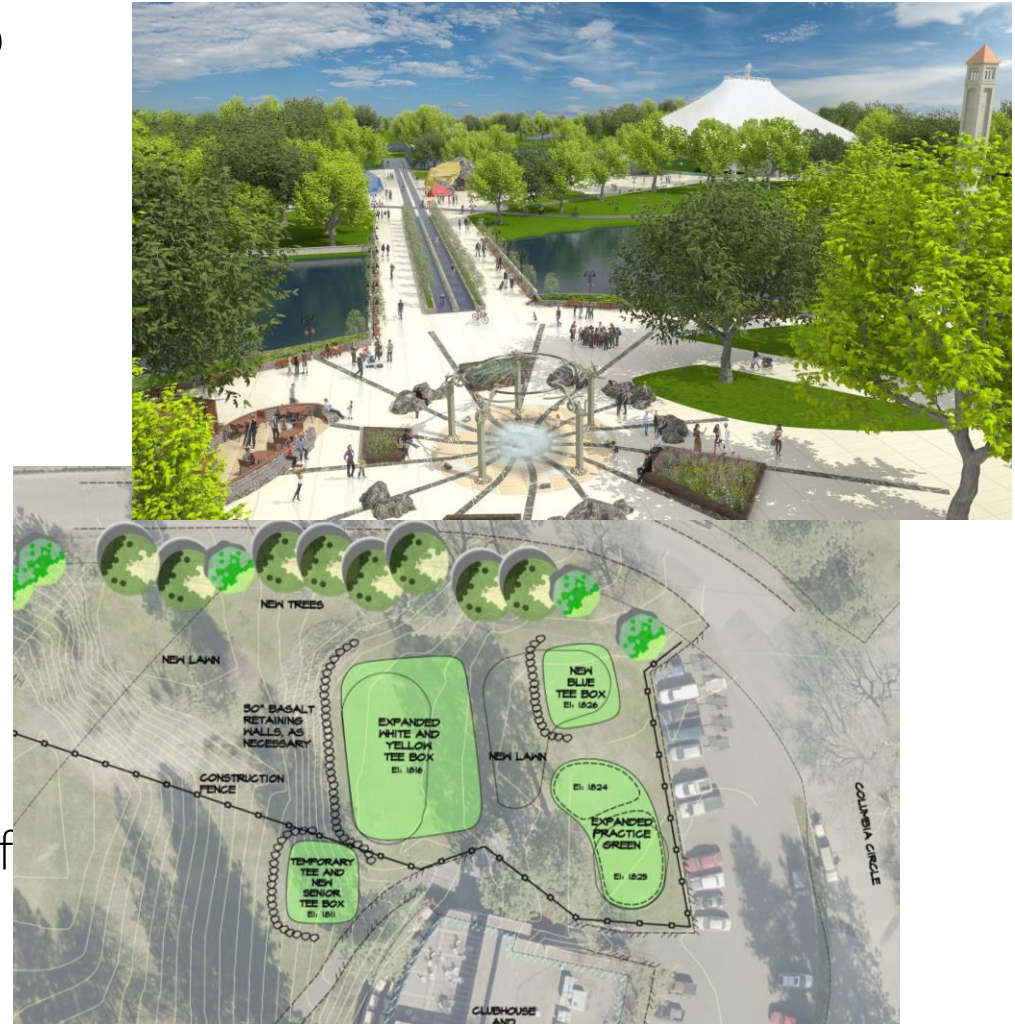
3-Dimensional View of Streets

Green Infrastructure Examples



6. We'd like a Park with that!

- Street Levy thinking also brought us the plan to revitalize Riverfront Park
 - Getting more for the same amount people were already paying
- Utilities and Parks Partnership
 - Using Parks property to site CSO and stormwater infrastructure
 - Examples: Downriver Golf Course, Underhill Park, Bosch Lot



5. We want places to drop in our new inflatable paddleboards from Costco!



New Access Points Coming:

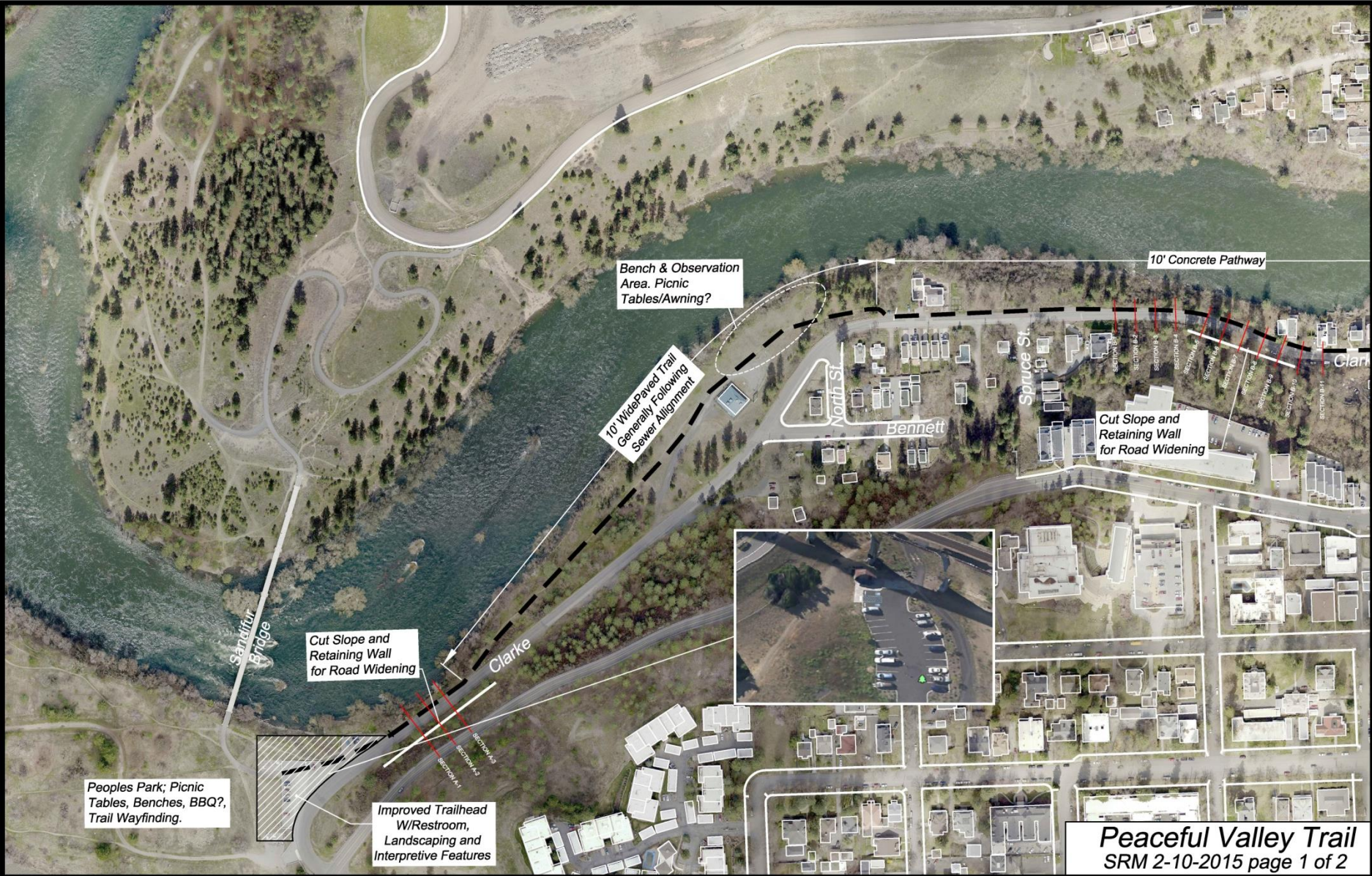
- At new Convention Center under Division Street
 - Paid for by PFD
- In Peaceful Valley, at Glover
 - As part of new trail from Glover to Sandifur Bridge (Back to that in a minute)
- Restoration of access point near Riverside Park Water Reclamation Facility
- No-Li Possibility



4. We love the Spokane River Gorge & Falls!

- Integrated Clean Water Plan Work is helping to complete the **Spokane River Gorge Master Plan**
 - CSO tanks at “Bosch” lot and next to City Hall
 - Post Street Bridge Replacement (sewer pipe)
- Helps complete “Gorge Loop Trail”





Bench & Observation Area. Picnic Tables/Awning?

10' Concrete Pathway

10' Wide Paved Trail Generally Following Sewer Alignment

Cut Slope and Retaining Wall for Road Widening

Cut Slope and Retaining Wall for Road Widening

Clarke

Bennett

Spruce St.

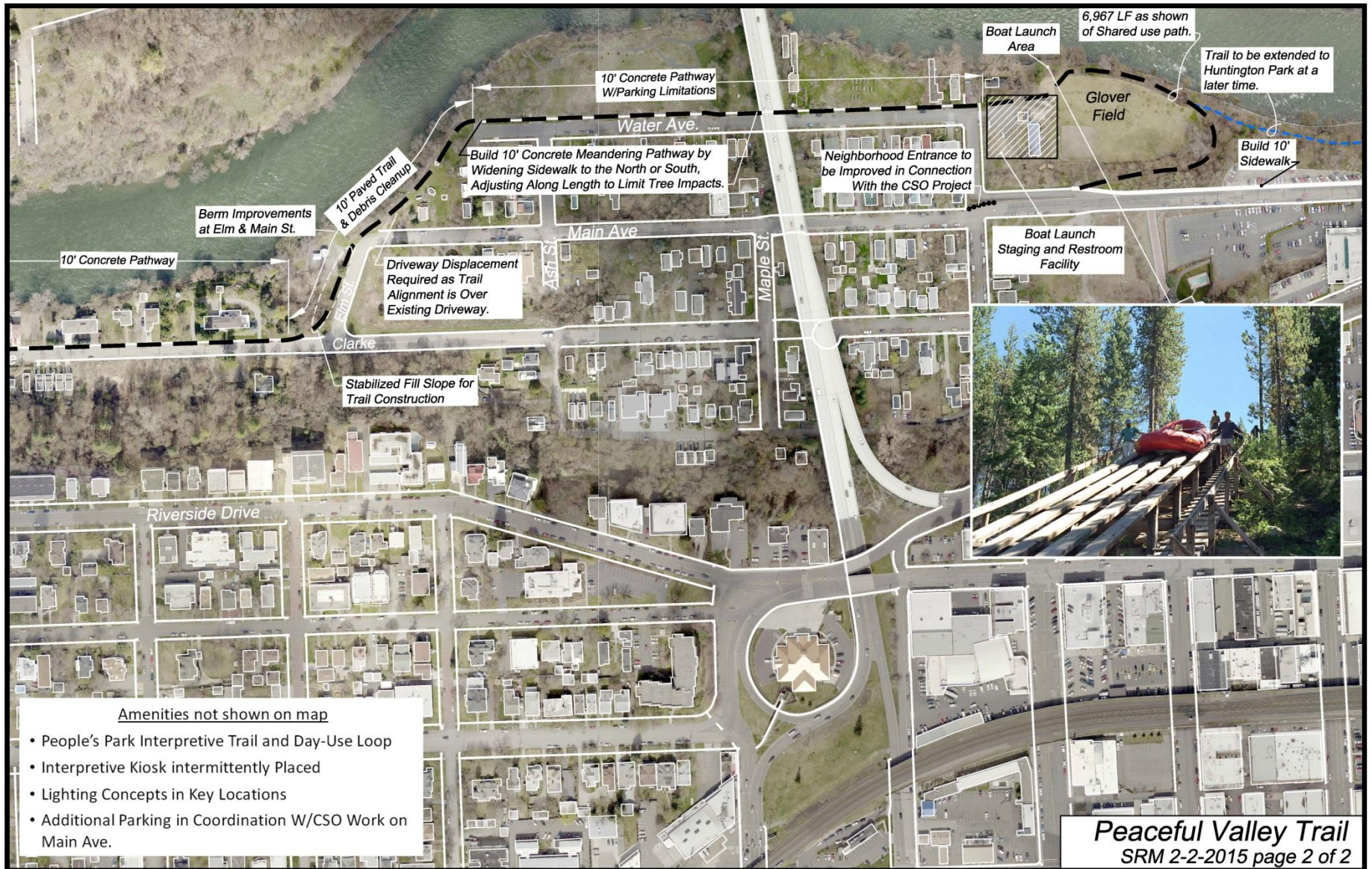
Clarke

Sanatfur Bridge

Peoples Park; Picnic Tables, Benches, BBQ?, Trail Wayfinding.

Improved Trailhead W/Restroom, Landscaping and Interpretive Features





6,967 LF as shown of Shared use path.

Trail to be extended to Huntington Park at a later time.

Boat Launch Area

10' Concrete Pathway W/Parking Limitations

Build 10' Concrete Meandering Pathway by Widening Sidewalk to the North or South, Adjusting Along Length to Limit Tree Impacts.

Neighborhood Entrance to be Improved in Connection With the CSO Project

Boat Launch Staging and Restroom Facility

Berm Improvements at Elm & Main St.

10' Concrete Pathway

Driveway Displacement Required as Trail Alignment is Over Existing Driveway.

Stabilized Fill Slope for Trail Construction

Riverside Drive

Amenities not shown on map

- People's Park Interpretive Trail and Day-Use Loop
- Interpretive Kiosk intermittently Placed
- Lighting Concepts in Key Locations
- Additional Parking in Coordination W/CSO Work on Main Ave.

Peaceful Valley Trail
SRM 2-2-2015 page 2 of 2

3. Who doesn't want to be a Garbageman?



2. History Matters.



1. It's the Economy, Stupid!

- Spokane's greatest natural asset
 - A draw for visitors, new residents, & new businesses
- Our River is an important key to:
 - Community economic health
 - Health of the public and the environment
 - And quality of life
- We will create a generation who feels ownership to our river
 - Increase river stewardship/caretaking
 - Increase recreational use of the river
 - Help create a Sense of Place





Thank You!