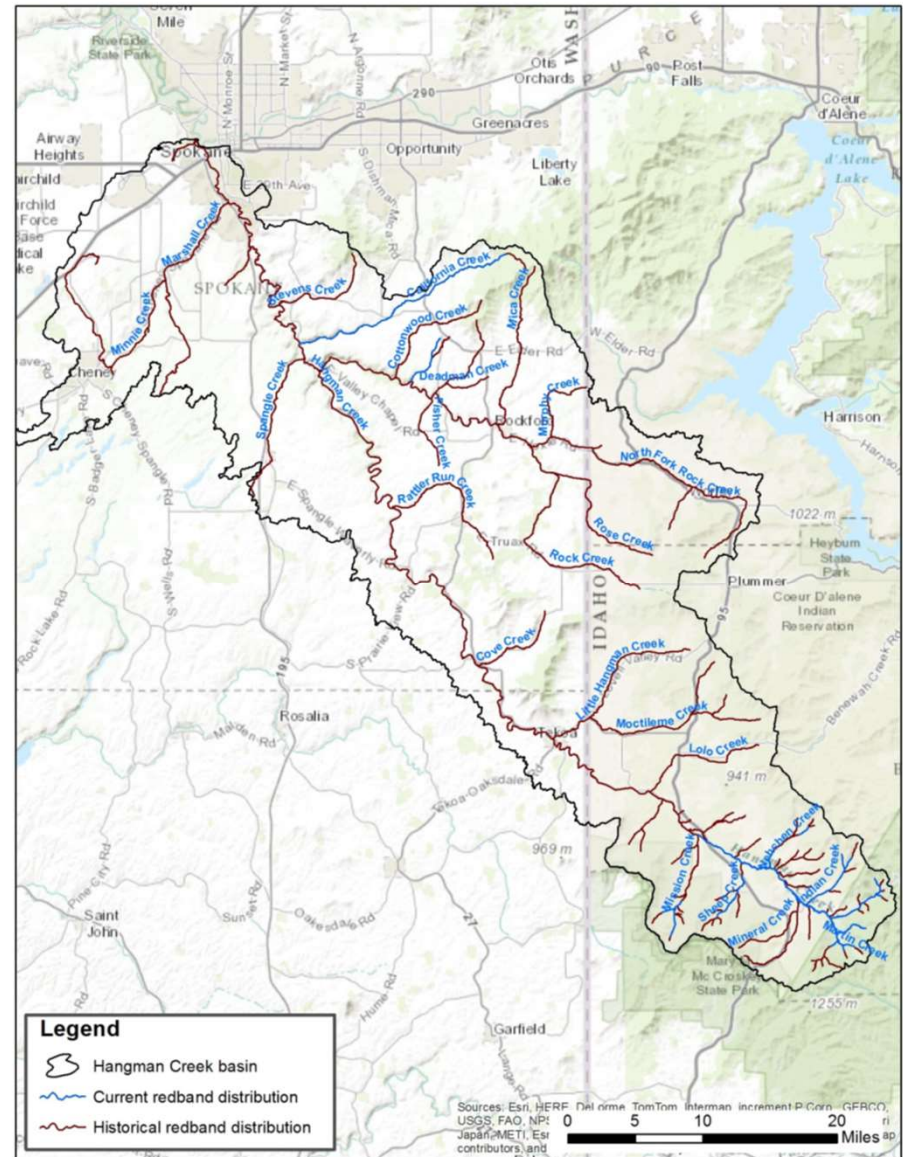




Hangman Creek Watershed

- Approx. 441,000 acres
- Land use 70% agriculture
- 1/3 of area in Idaho
- Forest land cover reduced by 50% - 86%



Spokane Riverkeeper v. EPA

- 2009 Fecal Coliform, Temperature, Turbidity TMDL
- 2015 lawsuit -- EPA arbitrary and capricious in approval of TMDL
- Reasonable assurance challenged
- Ecology participated in settlement discussions
 - Wanted to be in control of the outcome
 - Risk to our TMDL program
 - Recognized important work needed in the watershed

Elements of the Agreement

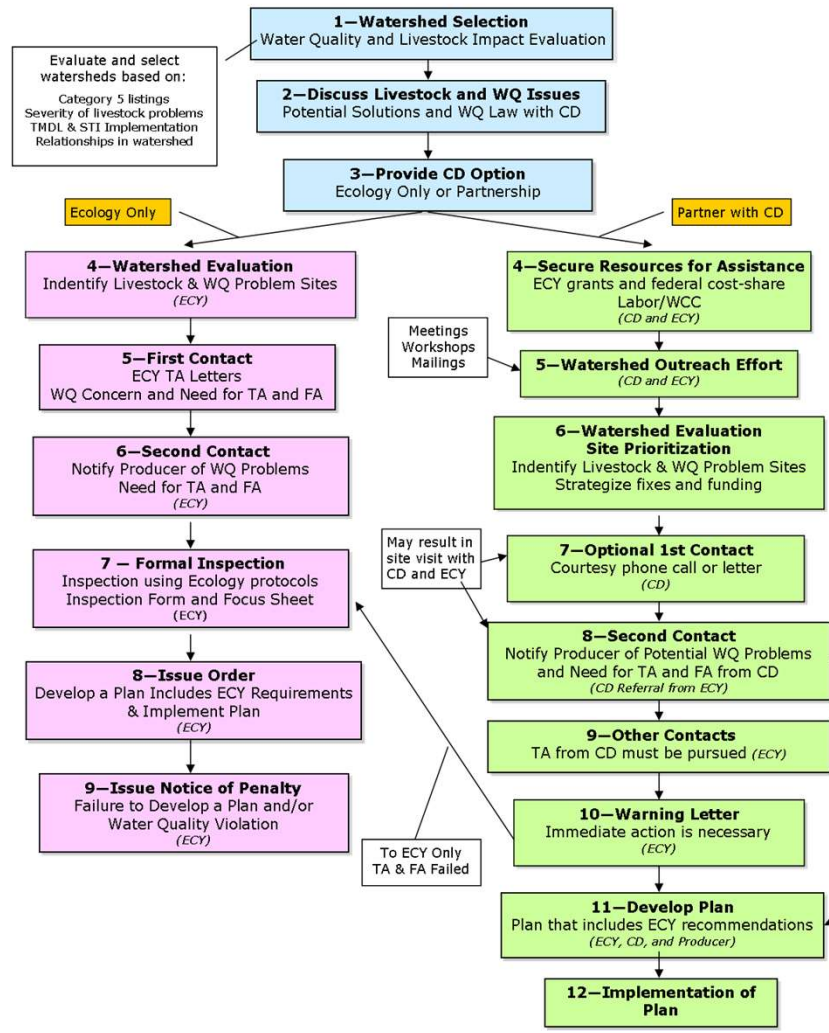
- Riparian Assessment
 - Forest, Ag, Suburban areas, Golf Courses, etc.
- Tillage Watershed Evaluation
 - Prioritize 10 sites for contact
- Livestock Watershed Evaluation
 - Prioritize 5 sites for contact
- Outreach and Education
- Financial Assistance



Proactive Help to Protect WQ

- Regional Conservation Partnership Program (RCPP)
- Continuous Conservation Reserve Program (CCRP)
- Washington State Centennial/319 Funds
- Environmental Quality Incentives Program
- Terry Husseman Coastal Protection Account Funding
- Direct Implementation Funds (DIF)
- Conservation Commission Funding
- Conservation Corps Labor
- Other?

Flow Chart for Addressing Agricultural WQ Problems in ERO



Dryland Ag Visual Indicators

- Sheet and rill erosion caused by tillage
- Gully formation caused by tillage
- Active bank erosion caused by tillage and crop production
- Swales or other drainage feature carrying pollutants to surface water
- Tillage and crop production adjacent to or through field ditch
- Tillage and crop production through stream
- Tillage and crop production within the riparian area (Concerns: bank instability and erosion, nutrient/ pesticide/ herbicide run-off, absence of permanent woody vegetation)







