



# **Finding Collaboration: Getting Environmental and Agricultural Interests “On The Ground”**

**Spokane Conservation District**



# Common Goals

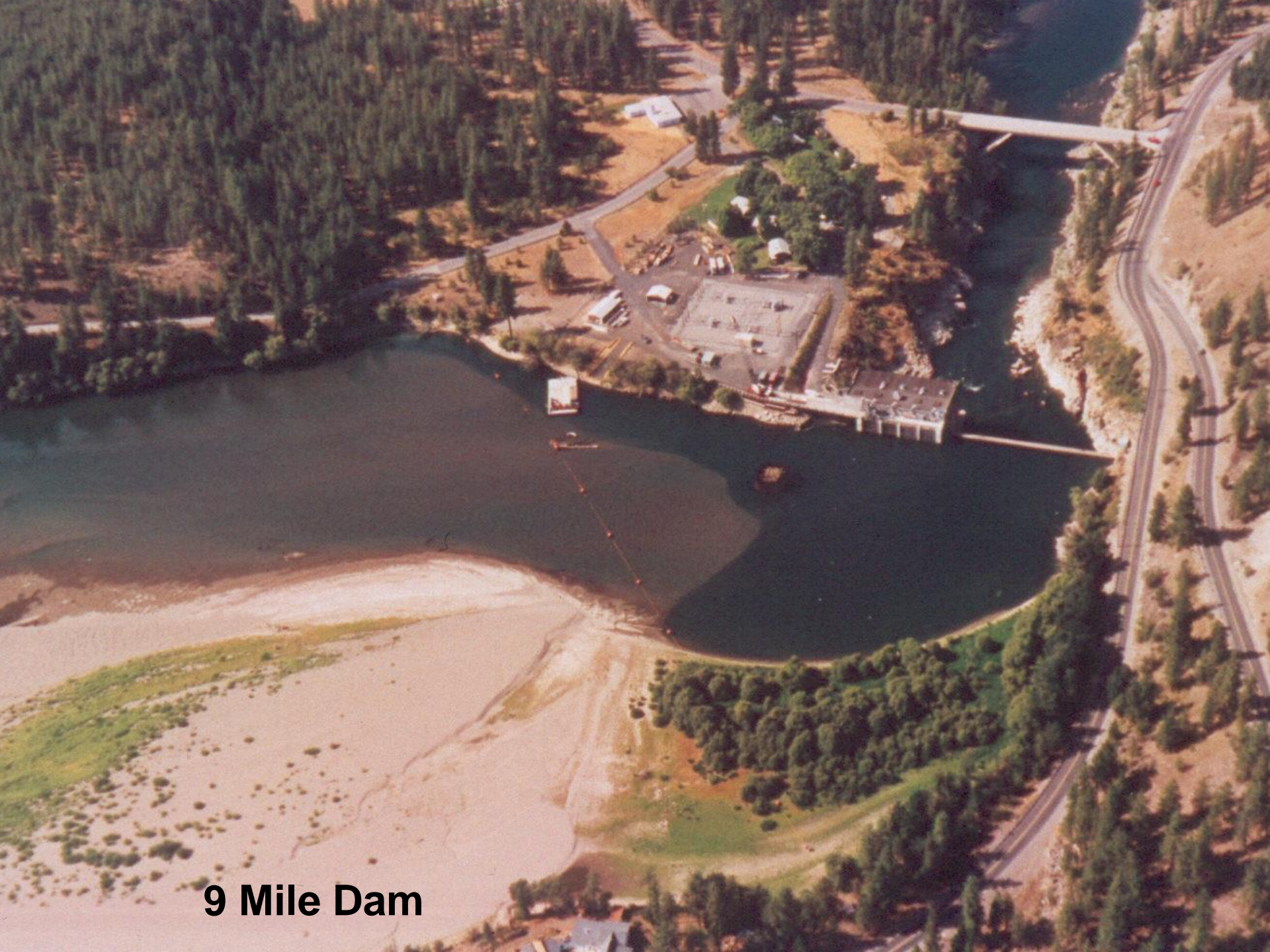
- Maintain Ag viability
- Protecting the natural resources
  - Water Quality
  - Instream Flows/Water Quantity
- Caring for the land
- Balance Competing Interests



**Spring 2017**

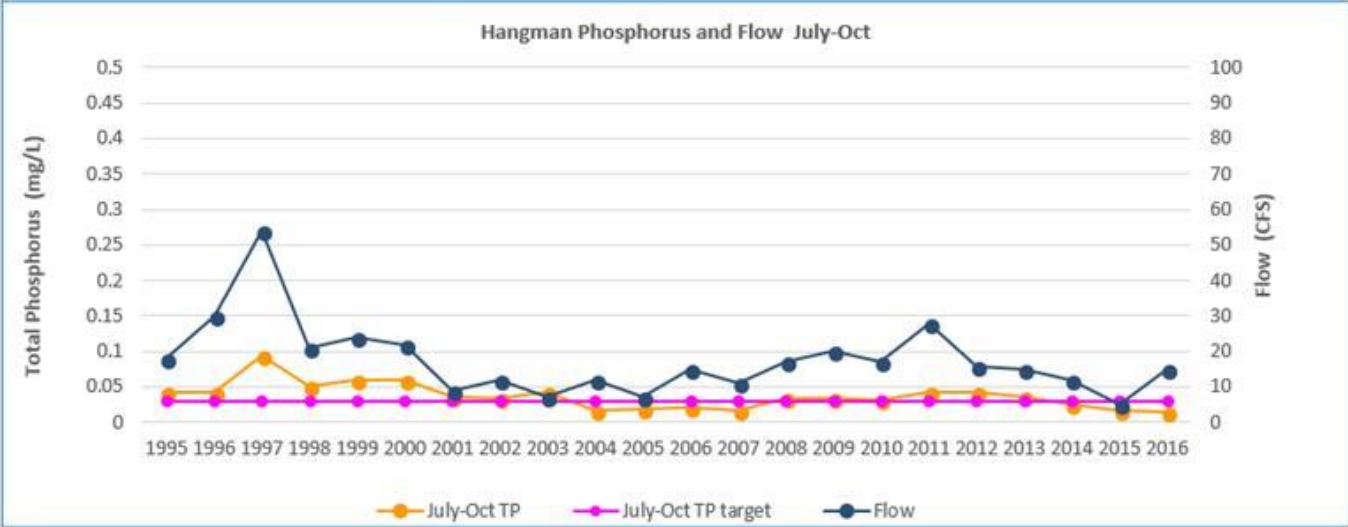
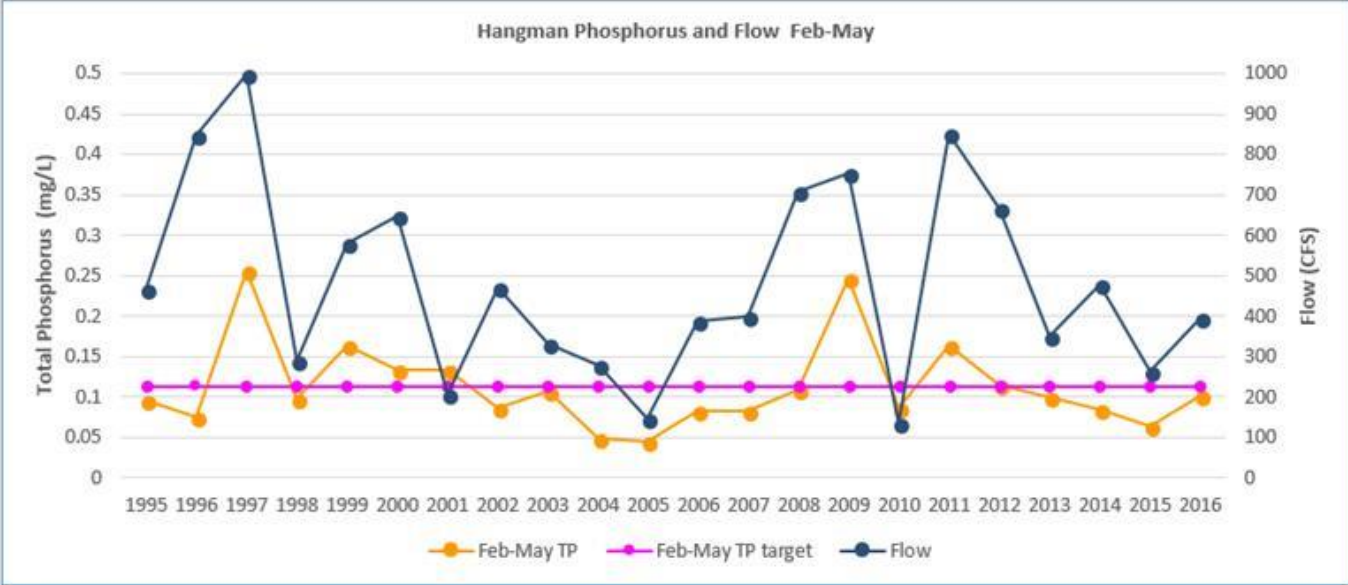


**Spring 1998**



**9 Mile Dam**

# Runoff Events in Hangman



# SCD Landowner Programs



- Every single one is Voluntary!
- Livestock Operations
- Streambanks
- Revegetation/Riparian
- Septics
- Forestry
- Agricultural (large and small tract)

# County Wide Stewardship Practices

Key Stewardship Practices			Historic Enrollment Data		
Management Type	Conservation Practices	NRCS Code	July 2011-2016	Average Annual Implementation	Estimated Annual Disenrollment
Tillage	No Till (ac) (6%)	329	0	0	0.00
	Mulch Till (ac)(6%)	560	19608	3268	196.08
Nutrients	Basic- Soil Tests(6%)	590	16124	2687.33	161.24
	Enhanced - Biosolids	590	together	together	together
	Precision - Soil Tests and Mapping	590	together	together	together
Buffers	Grass Buffer (ft)(6%)	386/393	0	0	0.00
	Riparian Herbaceous Cover (ft)(6%)	390	0	0	0.00
	Streambank and Shoreline Protection (ft)(3%)	580	450	75	2.25
	Riparian Forest (ft)(3%)	391	25200	4200	126.00
Livestock	Stream Crossing (#)(3%)	578	0	0	0.00
	Heavy Use Area (#)(3%)	561	22	3.67	0.11
	Fencing (ft)(3%)	382	30069	5011.5	150.35
	Nutrient Management (#)(3%)	590	9	1.5	0.05
	Pipeline (ft)(3%)	516	0	0	0.00
Forest	Forest Stand Improvement (ac)(3%)	666	816	136	4.08
	Tree and Shrub Establishment (ac) (3%)	612	344	57.3	1.72
	Tree and Shrub Pruning (ac)(3%)	660	759	126.5	3.80





# Technical Assistance

- BMPs/cost-share
- Funding
- Free site visits and consultations
- Workshops/trainings
- Volunteers
- Demonstration projects
- Publications and brochures
- Peer to Peer assistance

# Stream Bank Stabilization





**Project Site 2000**



**Project Site 2018**



# Project RM 17 – Valleyford (3,000' of bank)



16,000 tons in 2017  
(approx 1,200 Dump Trucks)

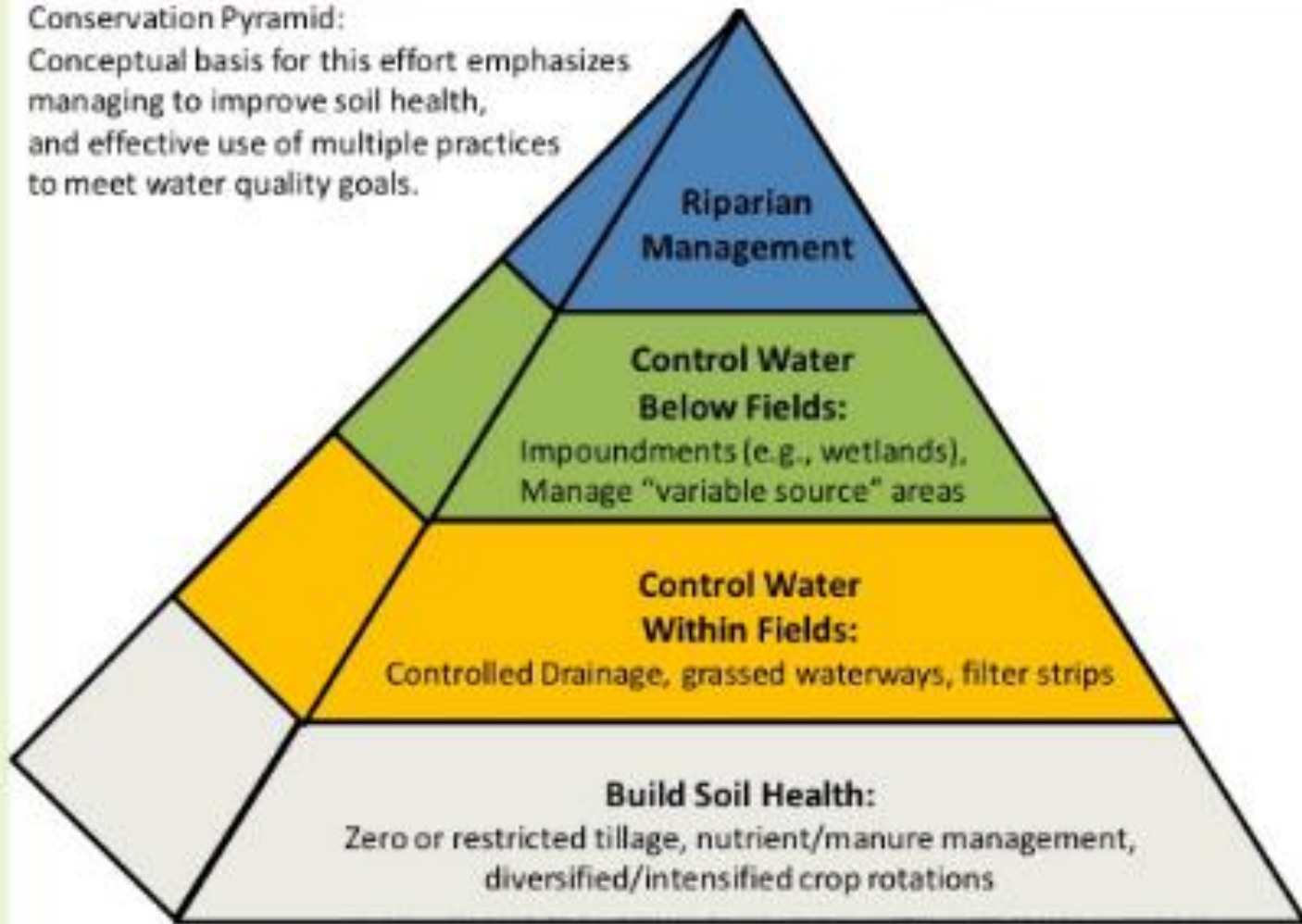


# Tillage



## Conservation Pyramid:

Conceptual basis for this effort emphasizes managing to improve soil health, and effective use of multiple practices to meet water quality goals.



**Riparian Management**

**Control Water Below Fields:**

Impoundments (e.g., wetlands),  
Manage "variable source" areas

**Control Water Within Fields:**

Controlled Drainage, grassed waterways, filter strips

**Build Soil Health:**

Zero or restricted tillage, nutrient/manure management,  
diversified/intensified crop rotations

# Conservation tillage vs: Conventional







# Riparian Buffers

- Woody Stem Program
  - 1 mile installed in hangman 2017-2018
- Commodity Buffer Program
  - 18 miles installed in Hangman 2017-2018



# Woody Stem Buffer





# Commodity Buffer

SCD research shows that buffers work better in a system than stand alone.

Our new program CAN do the following!

- Fairly compensate a producer annually for value of buffer area out of production.
- Protect a producer's bottom line.
- Make the buffer an asset instead of a liability.



# Commodity Buffer Funding



- The SCD Commodity Buffer Program does not currently fit within NRCS or Ecology Programs.
- Washington State Conservation Commission has agreed to assist in financial assistance for WA.
- We still need \$ for Idaho Commodity Buffer Program.
- 2017 = 139 ac.
  - 31 miles of buffer!
- 2018 = 211 ac
  - 50 miles of buffer!



# RCPP Buffer Video

# Livestock and Land BMP's



# Livestock and Land 2017



- 5750' of riparian fencing
- 4 off creek watering sites
- 4 heavy use areas
- 1 roof runoff structure
- 1 waste storage facility
- 1000' riparian planting

# Program and Funding Mechanisms

- VSP
- RCPP
- Ecology Grants
- WSCC funds
  - Explain each

# Regional Conservation

## Partnership Program: Big Objectives



- Approximately 150,000 acres of conservation
  - 120,100 acres of conservation tillage
  - 20,000 acres of precision ag.
  - 750 acres of riparian buffer/filter strips (commodity)
  - 400 acres of conservation easements (ag and forest)
  - 8,750 acres of forest stand improvements
- Reduction of 600,000 tons of soil erosion by 2021.
- Improve water and air quality, soil health, and habitat.
- **Timeline**– 2016 through 2021





# 2017 RCPP Projects

## Washington

- Forest Thinning/Pruning
- Conservation Tillage
  - No-till incentive 19,990 acres
  - Reduced-till 6,560 acres
- Precision Nutrient Placement
  - 6,311 acres
- Stream Buffer Incentive
  - **139 acres or 31 miles**

**33,000 Acres Treated**

## Idaho

- Forest Management Plans
- Forest Thinning/Pruning
- Tree Planting
- Conservation Tillage
- Precision Nutrient Placement

**8,800 Acres Treated**



# 2018 RCPP Projects

## Washington

- Forest Thinning/Pruning
- Conservation Tillage
  - No-till incentive 38,400 acres
  - Reduced-till 25,300 acres
- Precision Nutrient Placement
  - 10,456 acres
- Stream Buffer Incentive
  - **211 acres or 49 miles**

**74,367 Acres Treated**

## Idaho

- Forest Management Plans
- Forest Thinning/Pruning
- Tree Planting
- Conservation Tillage
- Precision Nutrient Placement

**5,400 Acres Treated**



# RCCP Partners

- Partners from former watershed groups and many new ones (over 20 partners)
- Spokane and CDA Tribes
- Idaho Dept. of Lands
- Conservation CDs
- Lands Council
- Pacific Northwest Direct Seed Association
- Many others

# Conservation Practices Database

Key Stewardship Practices			Historic Enrollment Data		
Management Type	Conservation Practices	NRCS Code	July 2011-2016	Average Annual Implementation	Estimated Annual Disenrollment
Tillage	No Till (ac) (6%)	329	0	0	0.00
	Mulch Till (ac)(6%)	560	19608	3268	196.08
Nutrients	Basic- Soil Tests(6%)	590	16124	2687.33	161.24
	Enhanced - Biosolids	590	together	together	together
	Precision - Soil Tests and Mapping	590	together	together	together
Buffers	Grass Buffer (ft)(6%)	386/393	0	0	0.00
	Riparian Herbaceous Cover (ft)(6%)	390	0	0	0.00
	Streambank and Shoreline Protection (ft)(3%)	580	450	75	2.25
	Riparian Forest (ft)(3%)	391	25200	4200	126.00
Livestock	Stream Crossing (#)(3%)	578	0	0	0.00
	Heavy Use Area (#)(3%)	561	22	3.67	0.11
	Fencing (ft)(3%)	382	30069	5011.5	150.35
	Nutrient Management (#)(3%)	590	9	1.5	0.05
	Pipeline (ft)(3%)	516	0	0	0.00
Forest	Forest Stand Improvement (ac)(3%)	666	816	136	4.08
	Tree and Shrub Establishment (ac) (3%)	612	344	57.3	1.72
	Tree and Shrub Pruning (ac)(3%)	660	759	126.5	3.80

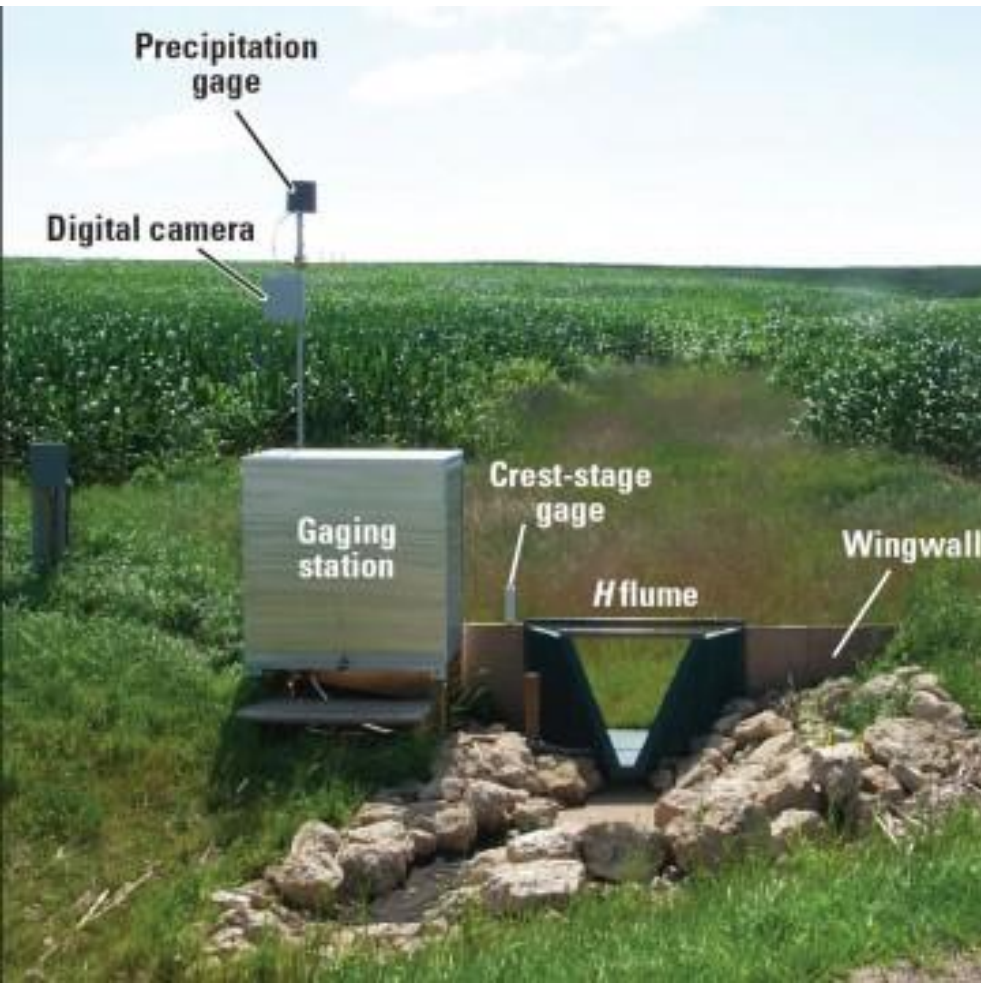


# Monitoring

- Conservation Practice Database
- Edge of Field Monitoring
- GIS Mapping
- Aerial Photography
- Regulatory Backstops

# RCPP Innovation

## Edge of Field Monitoring



- Research on farms provides an important link between plot and watershed scale research.
- Also a way to actively engage farmers in discussions on local water quality issues.
- Some of the critical issues are effective monitoring and identifying the best approaches to monitoring from individual farms.

# Conventional Till Field

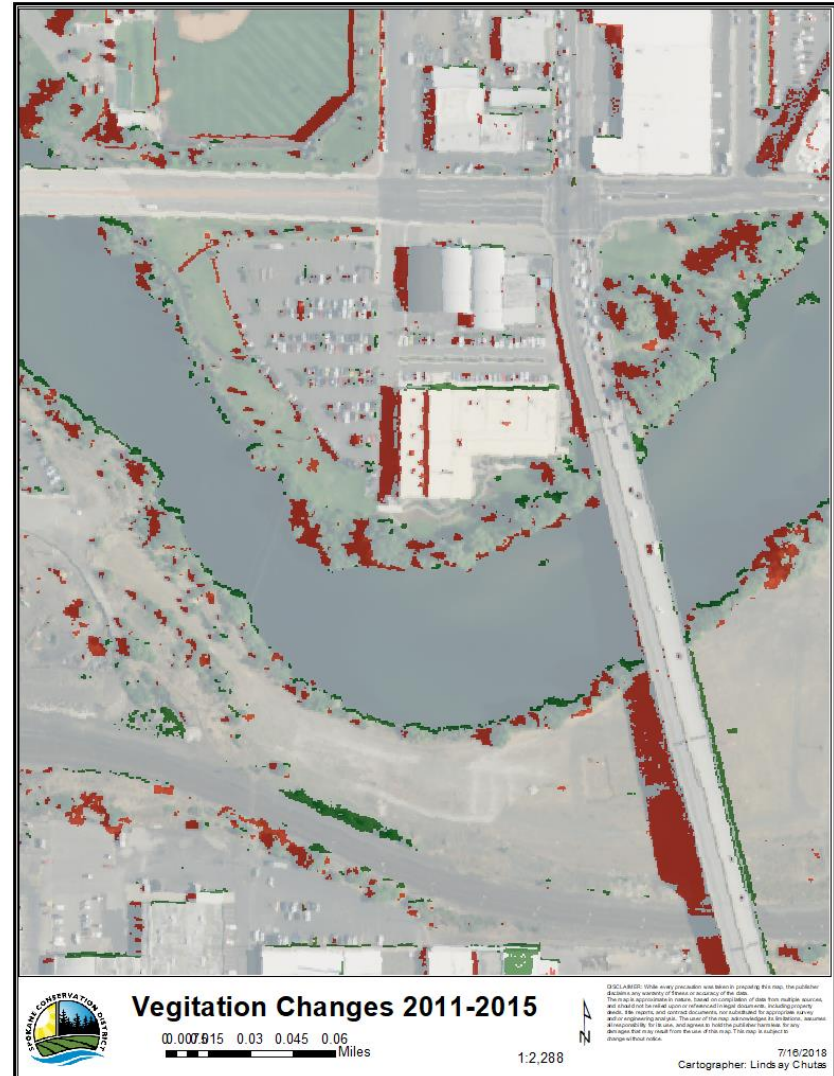
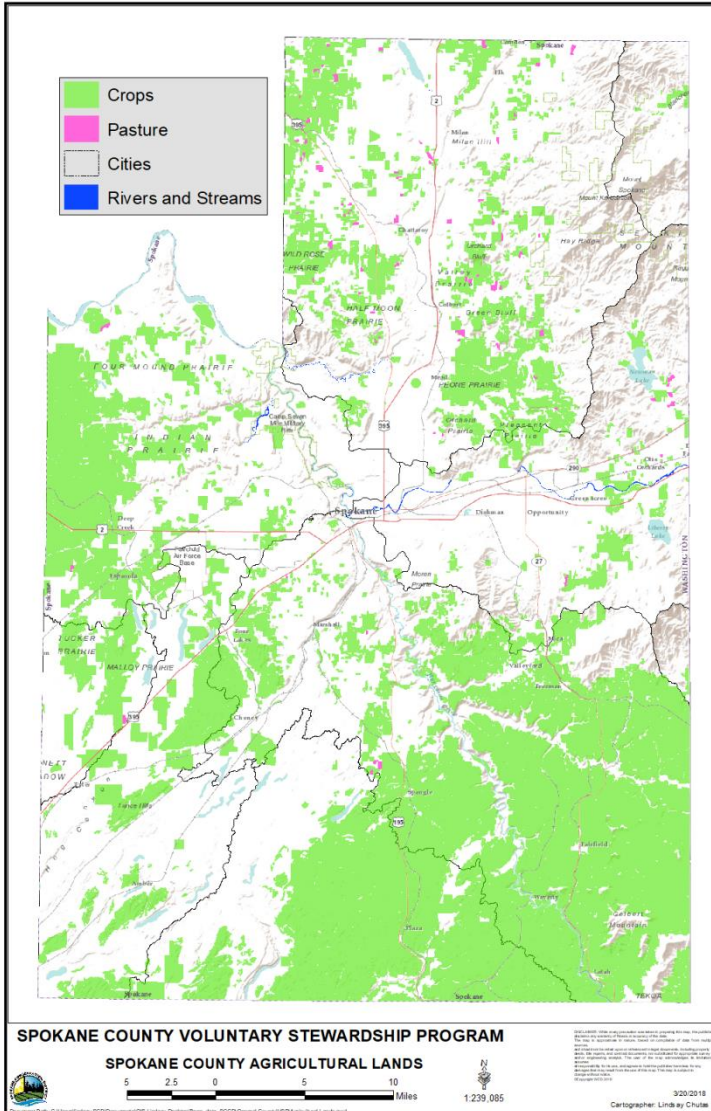


# Direct Seed Field





# GIS Comparative Mapping/ Aerial Photography





# Takeaways

- Flashy events are where work still needs to be done
- Multifaceted approach to slowing phosphorus and sediment contribution to Spokane River
- Monitoring to identify most cost effective implementation
- Additional 2-5 years of funding exists through RCPP, WSCC, and other sources
- Voluntary and enforcement strategies evolving
- SCD is leading voluntary efforts with Lands Council and others
- Stay Tuned...