



IDAHO WASHINGTON AQUIFER COLLABORATIVE

IWAC.US

OUR WATER. OUR FUTURE.

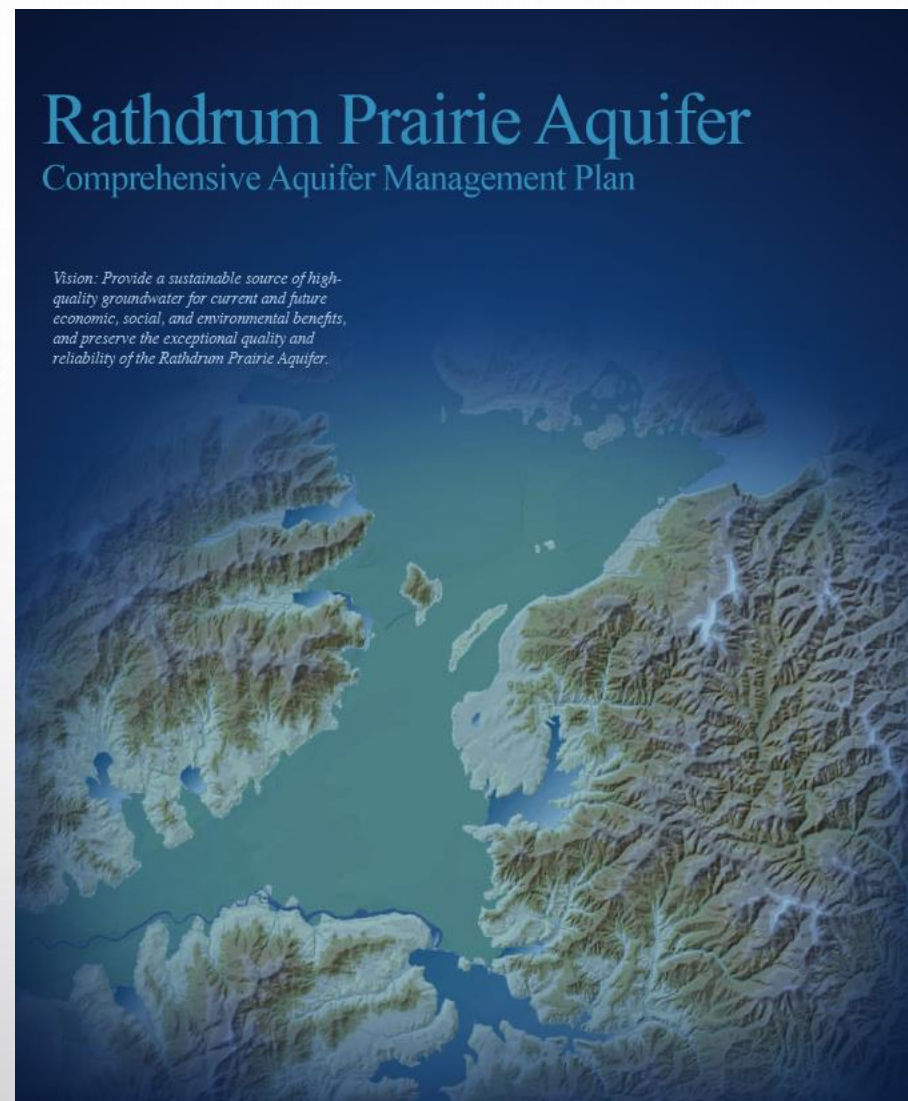
PARTNERING IN SHARED STEWARDSHIP OF THE SPOKANE VALLEY RATHDRUM
PRAIRIE AQUIFER AND SPOKANE RIVER WATERSHED

SUZANNE SCHEIDT, IWAC PRESIDENT



WHERE IT BEGAN...

AT THE DIRECTION OF THE IDAHO
WATER RESOURCE BOARD AND IDAHO
LEGISLATURE, THE RATHDRUM PRAIRIE
AQUIFER MANAGEMENT PLAN WAS
FINALIZED IN 2011



IDWR Website [link](#)



RP CAMP RECOMMENDATION FOR REGIONAL FRAMEWORK & IWAC

**IWAC CREATED IN 2012 THROUGH
CONSENSUS BETWEEN:**

- **ID & WA WATER PURVEYORS**
- **SAJB**
- **COEUR D'ALENE TRIBE**
- **AVISTA**
- **SPOKANE RIVER FORUM**
- **IDEQ & WA DOE**
- **U OF ID AND WSU**
- **NON-PROFITS**

A regional framework should look for ways to constructively integrate with other local and regional efforts, such as water system planning, watershed planning, ongoing adjudication, and similar efforts.

- 2011 RP CAMP, Appendix 7

WHAT ?

IWAC IS ORGANIZED AS A NON-PROFIT 501(C)3 ORGANIZATION

OUR COLLABORATIVE IS COMPRISED OF WATER AND WASTEWATER PURVEYORS ACROSS SPOKANE AND KOOTENAI COUNTIES

WE ARE SUPPORTED BY ADVISORY MEMBERS INCLUDING:

- **COEUR D'ALENE TRIBE**
- **IDEQ**
- **IDWR**
- **WA-DOE**
- **ENVIRONMENTAL PROFESSIONALS**
- **UNIVERSITIES**





IWAC'S PURPOSE AND GOALS

PURPOSE

- TO WORK TOGETHER TO **MAINTAIN AND/OR ENHANCE WATER QUALITY AND QUANTITY FOR PRESENT AND FUTURE GENERATIONS BY DEVELOPING MANAGEMENT STRATEGIES THAT BENEFIT THE SPOKANE VALLEY RATHDRUM PRAIRIE AQUIFER AND THE SPOKANE RIVER REGION.**

GOALS

- THE OBJECTIVE OF **DEVELOPING MANAGEMENT STRATEGIES IS TO ADDRESS REGIONAL WATER SUPPLY AND DEMAND NEEDS OVER THE NEXT 50 TO 100 YEARS.**

EFFICIENT IRRIGATION & LANDSCAPE STANDARDS

A MENU OF OPTIONS FOR PREPARING AND ADOPTING AN ORDINANCE OR STANDARDS



Outdoor Watering Nerds

SPOKANE AND KOOTENAI COUNTIES

The Adventures of Drippy the Water Drop!

A Spokane Valley Rathdrum Prairie Aquifer Water Cycle Lesson

Artwork by Kayla Wakulich
Graphics by Eric Miller



Funded by the Idaho Washington
Aquifer Collaborative
www.IWAC.us



Deliver just the right amount
of water to your lawn with

SMART CONTROLLERS AND SENSORS

[CLICK TO LEARN MORE](#)

Outdoor Watering Nerds
Spokane and Kootenai Counties

Protect the water supply by using eco friendly

FERTILIZERS, PESTICIDES, & HERBICIDES.

[CLICK TO LEARN MORE](#)

Outdoor Watering Nerds
Spokane and Kootenai Counties



MODFLOW USG – RATHDRUM PRAIRIE EXTENT OF SVRPA

- THE NEW GROUNDWATER FLOW MODEL FOR THE PURVEYORS WILL INCLUDE ELEMENTS NOT IN PRIOR MODELS:
 - GREATER SPATIAL AND VERTICAL RESOLUTION
 - REPRESENTATION OF CURRENT CONDITIONS (LAND USES, GROUNDWATER PUMPING)
 - ABILITY TO ACCOUNT FOR FUTURE GROWTH AND CHANGES IN CLIMATE/HYDROLOGY
 - DESIGN THAT FACILITATES WATER SUPPLY PLANNING (I.E., WATER PURVEYOR PLANNING NEEDS)
 - ENHANCED PARTICLE TRACKING FOR WELLHEAD PROTECTION



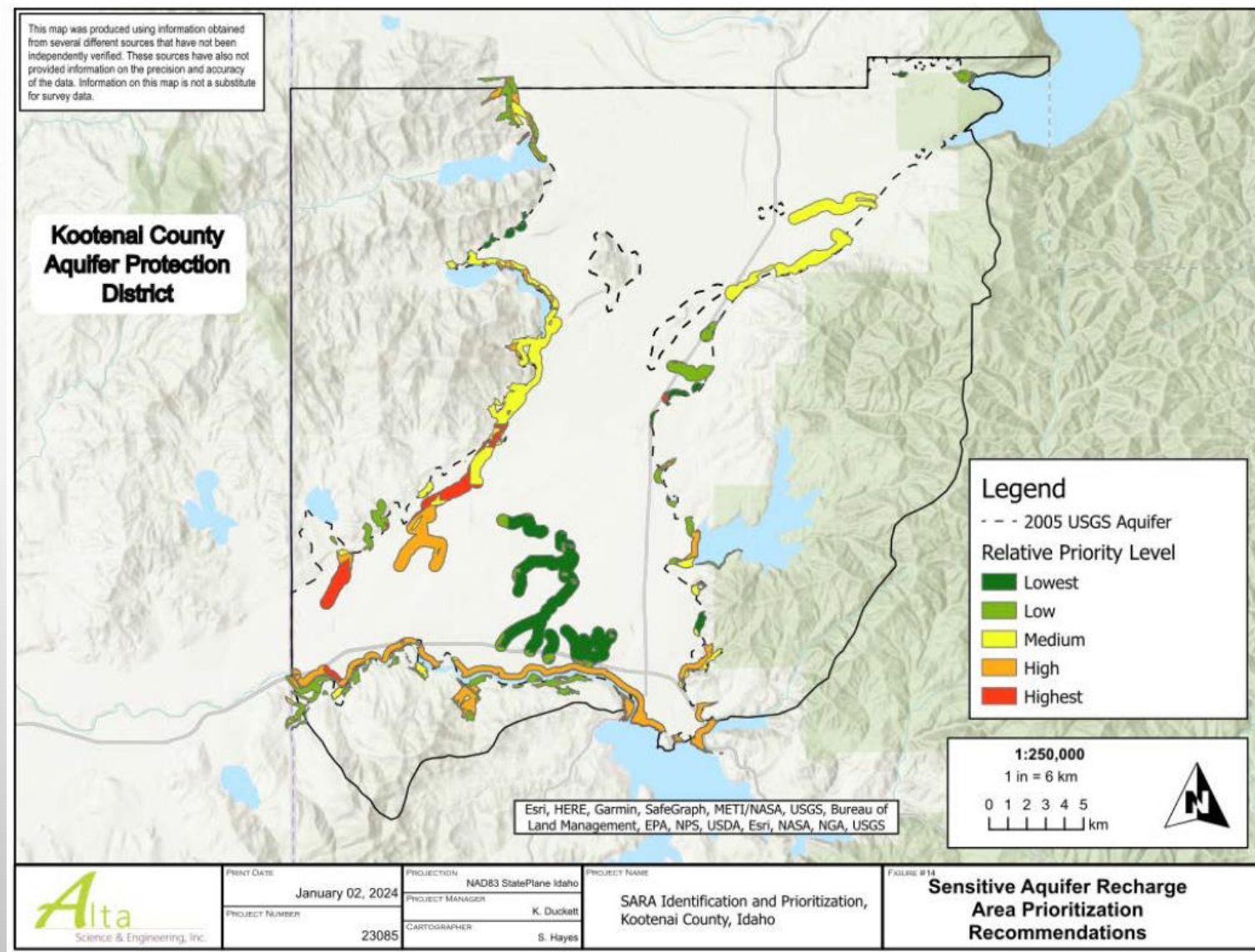
MODFLOW USG – RATHDRUM PRAIRIE EXTENT OF SVRPA

- THE TARGET OUTCOMES FOR THE MODEL ENHANCEMENT EFFORT ARE:
 - INCLUDE THE BEST FEATURES OF PRIOR MODELS (USGS, CITY OF SPOKANE, SAJB)
 - OBTAIN AN UPDATED AND DEFENSIBLE CALIBRATION BASED ON RECENT/CURRENT CONDITIONS AND DATA
 - NATURAL HYDROLOGY (LAKES, PRECIPITATION)
 - LAND USES
 - GROUNDWATER PUMPING
 - GROUNDWATER LEVELS AND THEIR FLUCTUATIONS
 - ACQUIRE AN UPDATED PLATFORM (I.E., A NEWLY-REFINED MODEL) THAT IS A COMMON STARTING POINT FOR STAKEHOLDERS TO USE FOR PLANNING AND PROJECT-LEVEL ANALYSES



THE MODEL AS A COLLABORATIVE TOOL

- SUPPORTS KOOTENAI COUNTY AQUIFER PROTECTION DISTRICT'S ENDEAVORS TO PROVIDE FOR ENHANCED PARTICLE TRACKING WITHIN SENSITIVE AQUIFER RECHARGE AREAS





CALL TO ACTION