

# PERMANENT PROTECTION FOR LOCAL LANDS AND WATERS



Inland Northwest Land Conservancy  
Spokane River Forum  
Tuesday, April 22, 2025



# Our Core Values

## Love of Nature

Our work is driven by a deep love of the natural world and a desire to inspire that value in others.

## Relationships

We seek to honor and learn from others, deepen connections to nature, and nurture relationships that help to advance a shared commitment to conservation

## Discernment

We make strategic choices based in science and the needs of our communities and partners to maximize our enduring conservation impact.

## Perpetuity

We steward lands and resources so that our work outlives us and benefits future generations.








# **Our Vision**

**People across our region collaborating together to conserve the natural lands, waters, and open spaces that sustain and enrich life, fostering nature's resilience for generations to come.**





We protect and care  
for the lands and  
waters essential to life  
and the well-being of  
communities in the  
Inland Northwest.

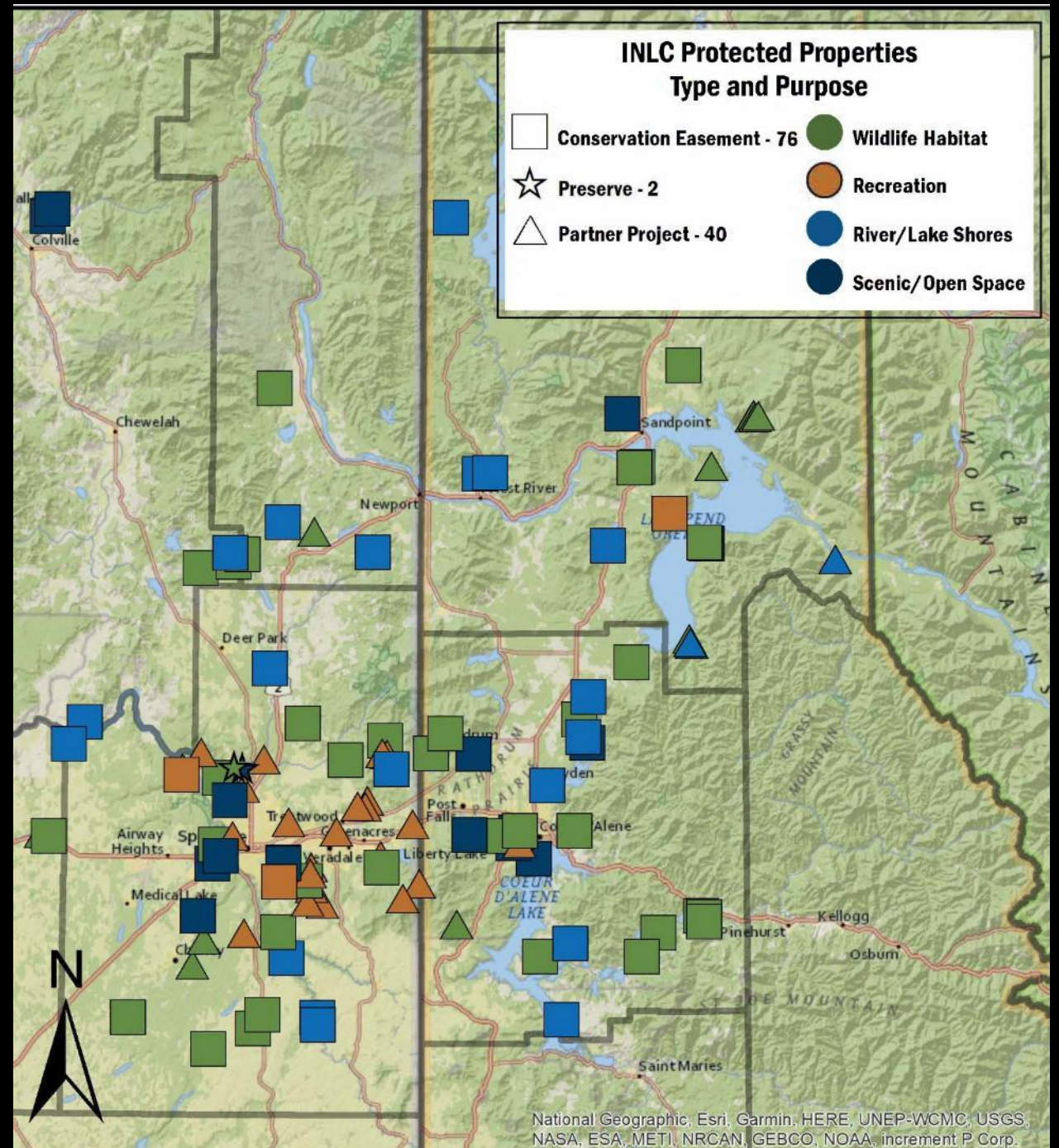
**Our Mission**





# 129

# Special places permanently protected throughout the region





**INLC Priority Areas**

This map displays the Inland Northwest Land Conservancy's (INLC) priority areas across several counties in Idaho and Washington. The highlighted regions include:

- Mt Spokane:** Located in the north-central part of the map, spanning Pend Oreille and Bonner Counties.
- Mica Peak:** Situated in the central-eastern part, covering Kootenai and Shoshone Counties.
- Hangman Creek:** Located in the south-central part, primarily within Spokane County.
- Channeled Scablands:** Found in the southwestern part of the map, spanning Lincoln and Whitman Counties.
- CDA River:** Located in the southeastern part, spanning Shoshone and Benewah Counties.

The map also shows county boundaries for Stevens, Lincoln, Whitman, Pend Oreille, Bonner, Kootenai, Shoshone, and Benewah. Key geographical features include the Selkirk Mountains, Coeur d'Alene National Forest, and various lakes and rivers. A scale bar at the bottom indicates distances in miles (0 to 35). The INLC logo is in the bottom right corner.

Sources: Esri, HERE, Garmin, Intermap, increment P Corp., GEBCO, USGS, FAO, NPS, NRCAN, GeoBase, IGN, Kadaster NL, Ordnance Survey, Esri Japan, METI, Esri China (Hong Kong), (c) OpenStreetMap contributors, and the GIS User Community

Sources: Esri, HERE, Garmin, Intermap, increment P Corp., GEBCO, USGS, FAO, NPS, NRCAN, GeoBase, IGN, Kadaster NL, Ordnance Survey, Esri Japan, METI, Esri China (Hong Kong), (c) OpenStreetMap contributors, and the GIS User Community



# Hangman Creek Priority Area



## Legend



Hangman Creek Priority Area



Hangman Creek and Tributaries



0 1.75 3.5 7 10.5 14 Miles  
1 inch = 20,833 feet

Produced by: Michael Crabtree  
All boundaries are approximate









# Hanging Tree Property



- INLC has protected 7 projects for 1,500 acres in the Hangman Priority Area.
- Identified ~100 priority landowners based on the property's natural resources

Hangman Outreach

Identifier	INLC Property Name	Owner Name	INLC Score	Acres	Adjacency	Rivers Stream ft	Wetland A	Resil Score	Habitat Core	Waterbody	Carbon Value	Sal Steel Hab	Staff Priority	SWCD Guidance
53		OCHLARE FARM INC	812.9	655.5	0.0	22209.9	10.6	14.6	0.00	0.0	14.6	7.0		Yes
26		INLAND EMPIRE PAPER COMPANY	1084.6	1658.5	200.0	20979.8	42.6	8.3	3.75	0.0	274.4	0.0		Yes
23		HEMMINGSON FARMS LLC	621.0	992.7	0.0	17704.3	19.2	0.0	0.00	0.0	0.0	13.0		Yes
190		DUNN SURVIVORS TRUST	857.3	941.7	0.0	14766.7	64.3	3.9	2.32	0.0	34.5	20.0		Yes
30		KETVY, BRUCE M	558.4	1408.6	0.0	13111.3	25.4	8.9	3.21	0.0	9.8	5.0		Yes
89		WILKERSON, RON G & KATHY	501.6	153.9	0.0	12804.7	6.0	1.8	3.18	0.0	9.0	9.0		Yes
52		NOOD, DELBERT W & DELIALEN K	112.8	236.8	0.0	6430.4	8.7	0.0	0.00	0	0	0		Yes
71		SIEVERS, ROBERT R	195.5	180.0	0.0	4901.0	2.6	0.0	0.00	0	0.249091	5		Yes
4		FISCHER, CHERYL E FULTON	59.4	302.4	0.0	2703.4	7.2	0.0	0	0	0.050305	0		Yes
9		FULTON, LEONARD (Estate)	136.8	274.8	0.0	2652.6	5.6	0.0	0.00	0	0	4		Yes
50		NACCARATO, IAY & SHARON	245.2	277.9	0.0	2578.2	2.5	3.2	0.00	0	5.483135	7		Yes
76		SUZY DIX FAMILY LIMITED PARTNERSHIP	48.7	149.8	0.0	350.2	1.0	0.0	3.18	0	9.121369	0		Yes
61		POTTRATZ II, DENNIS	5.1	116.9	0.0	202.0	1.2	0.0	0	0	0	0		Yes
157		FELGENHAUER FARMS, LLC	8.2	2896.4	0.0	0.0	8.2	0.0	0	0	0	0		Yes
28		JANSON, CARY C & LINDA L	1049.9	934.0	200.0	22284.9	18.7	0.9	0.00	0.0	7.2	19.0		Strong Yes
68		ROBERTS DAUGHTERS, LLC	422.4	686.6	0.0	12733.3	6.6	0.0	0.00	0.0	0.0	9.0		Strong Yes
122		BRUNELL JOHN	1224.0	548.2	200.0	28721.4	99.4	21.9	3.73	0.0	3.8	0.0		
24		HIRSCHEL INC	836.5	708.5	0.0	25919.4	16.0	0.0	0.00	0.0	0.1	16.0		
22		HEIMS DEEP, LLC	554.2	402.8	0.0	24733.2	16.8	0.0	0.00	0.0	0.0	3.0		
64		PRIMMER FARMS LLC	1002.9	771.6	0.0	24147.8	19.8	7.5	0.00	0.0	3.9	20.0		
73		SHEPARD EXEMPTION EQUIVALENT TRUST	741.4	497.4	200.0	18142.8	15.3	4.2	3.73	0.0	75.2	0.0		
72		SCOTT, DOUGLAS R & JENNIFER A	388.8	206.7	0.0	17921.9	5.2	0.0	3.73	0.0	0.3	0.0		
194		F H WRIGHT FARMS, LLC	1174.8	1032.4	50.0	17758.3	20.0	13.1	3.73	0.0	8.9	26.0		
48		MITCHELL, GEORGE & CONDA/KODY, M & L	762.3	360.6	0.0	17278.1	18.4	0.0	0.00	0.0	10.5	20.0		
38		LEE, ROBERT D	754.5	318.1	0.0	16235.9	12.4	8.4	0.00	0.0	2.1	15.0		

## Grouse Creek Ranch







# Outreach Strategy

## Target Strategic Lands:

- Prioritize lands identified by the INLC Model for conservation efforts.

## Leverage Community Connections:

- Mobilize community networks to establish relationships with key landowners.

## Understand Landowner Perspectives:

- Conduct in-depth interviews with landowners to uncover and address conservation challenges.

## Overcome Barriers with Innovation:

- Break down obstacles by utilizing conservation programs, securing private funding, and exploring creative solutions.



A photograph of a forest scene. In the center, a small wooden bridge with railings crosses a narrow stream. The forest is dense with tall trees and lush green foliage. The ground is covered in brown leaves and pine needles. The text is overlaid in the center of the image.

**More than 15,000 Acres of  
additional land conserved in the  
next 5 years!**





# YOUR SUPPORT MAKES THIS WORK POSSIBLE! THANK YOU.

Invest in the *permanent* protection of the places we all love!  
Join the Conservancy today with a gift of any size.

