

# Waikiki Spring Creek Restoration and Fish Passage Improvement Project

Emma Greenwood



Spokane Tribe  
of Indians



# A story of partnerships...



Washington  
Department of  
**FISH and  
WILDLIFE**



**Spokane Salmon  
Restoration**  
COLLABORATIVE



DEPARTMENT OF  
**ECOLOGY**  
State of Washington



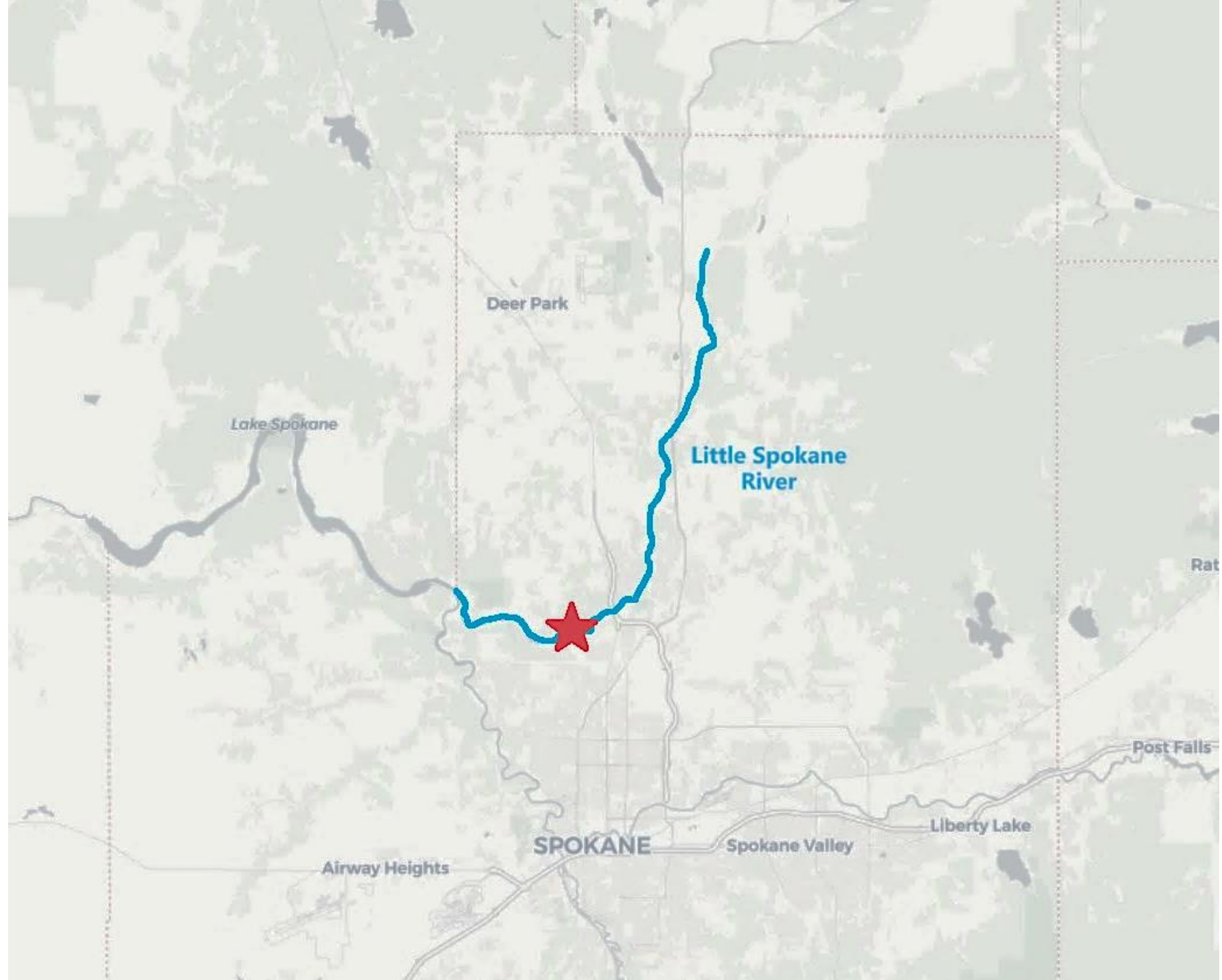
THE POWER OF PRESERVATION



WASHINGTON STATE DEPT OF  
**NATURAL  
RESOURCES**



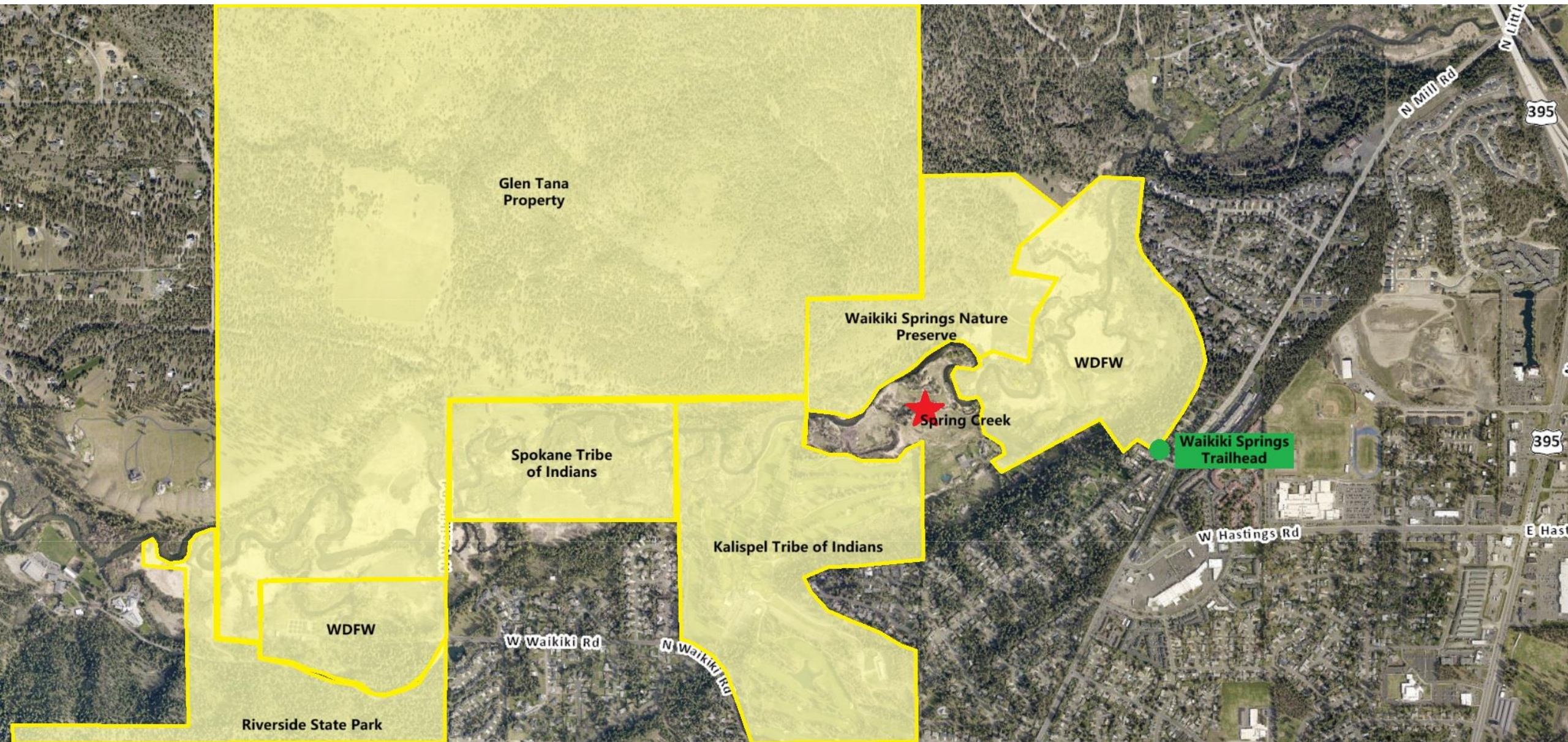
**UCUT**  
UPPER COLUMBIA  
UNITED TRIBES











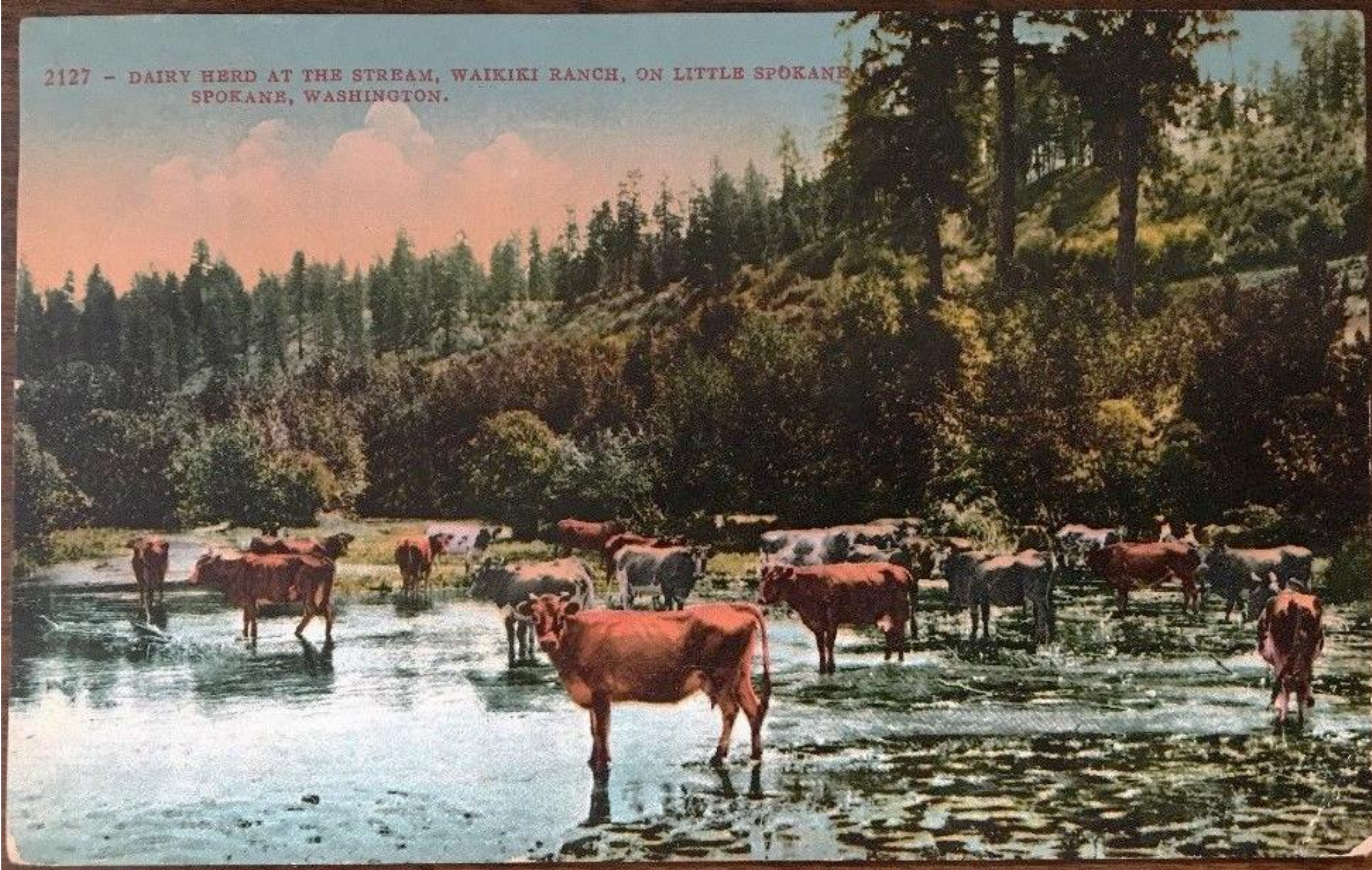




Photos by Dan Pelle, Tyler Tjomsland/The Spokesman Review



2127 - DAIRY HERD AT THE STREAM, WAIKIKI RANCH, ON LITTLE SPOKANE  
SPOKANE, WASHINGTON.

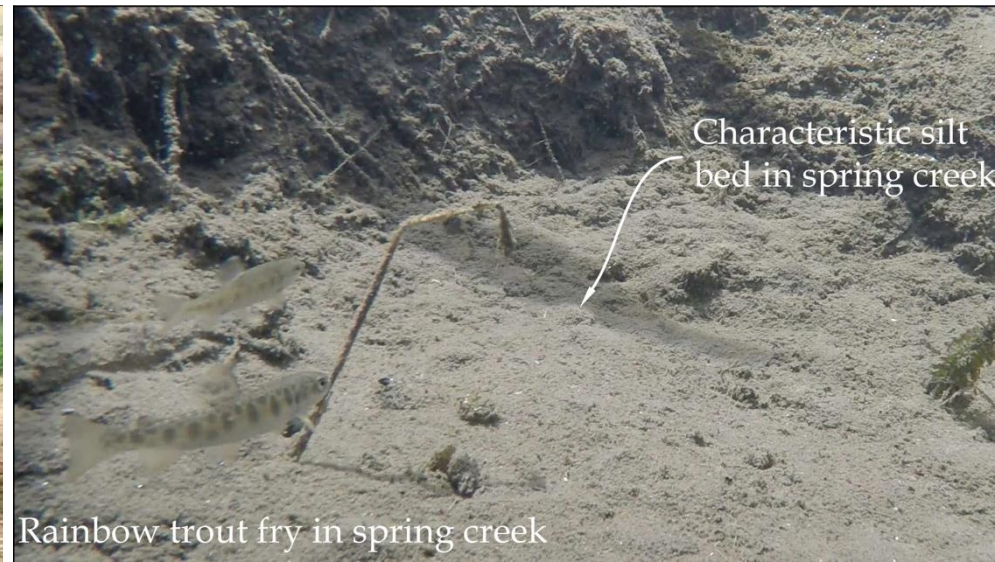


Post card showing cattle on Waikiki Farm ca. 1910 (courtesy of Ann Sharley collection)











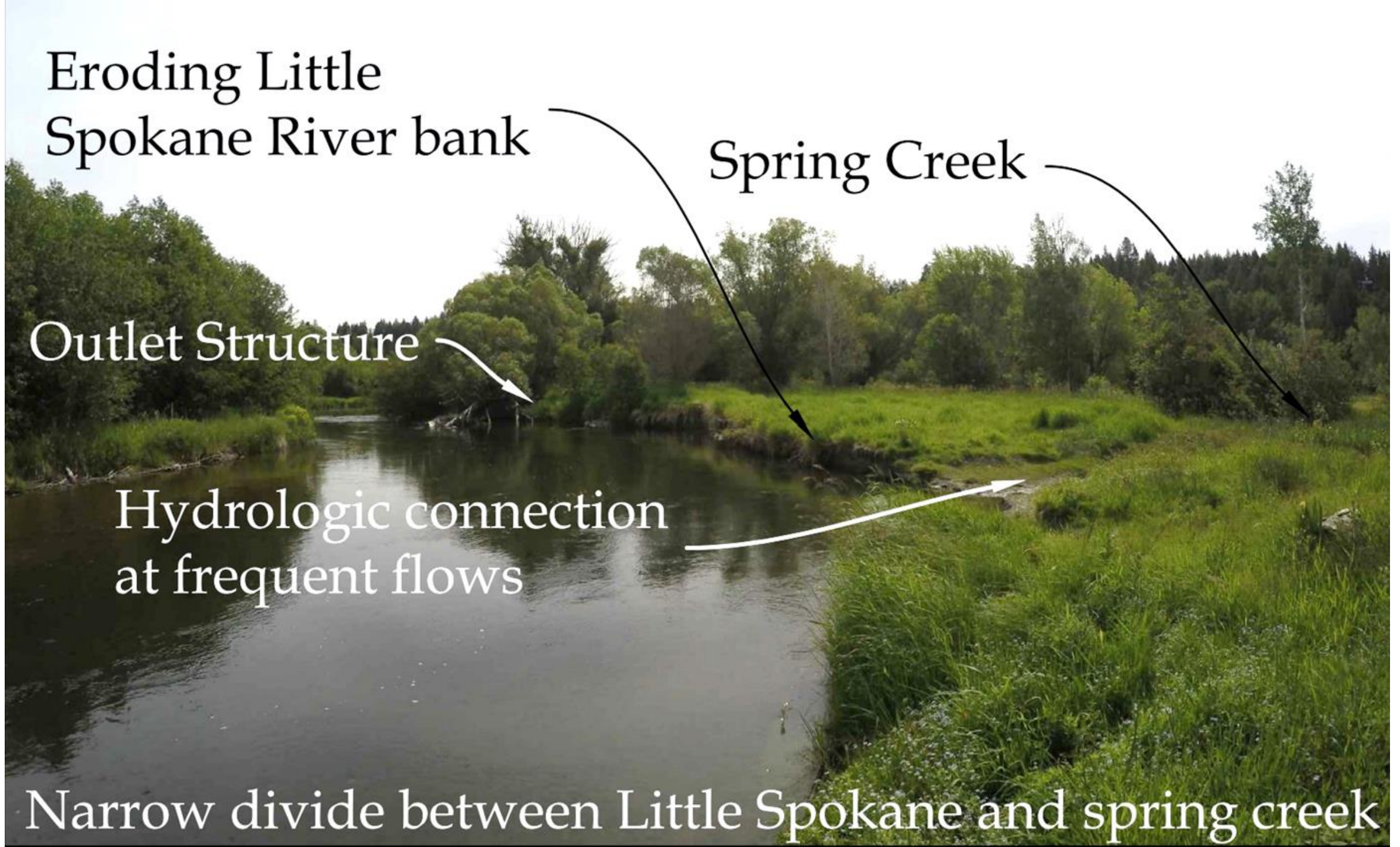
Eroding Little  
Spokane River bank

Spring Creek

Outlet Structure

Hydrologic connection  
at frequent flows

Narrow divide between Little Spokane and spring creek





Surface water connection between  
the Spring Creek and the Little  
Spokane River

Spokane Conservation District  
Riparian Planting Project

Yellow Iris

Little Spokane  
Riverbank Restoration

Waikiki Spring Creek

Primary outlet

Secondary outlet pipe

WDFW Wetland

Raceway

Headwall & Gates



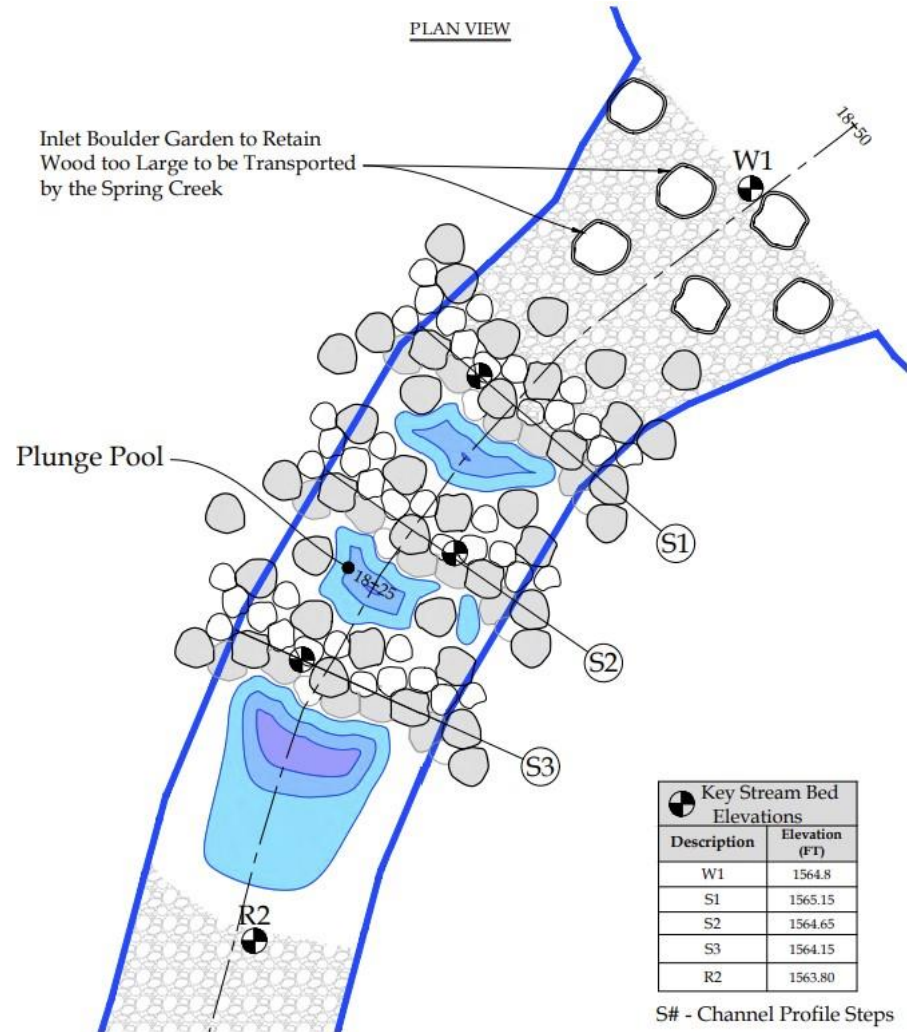


# Planning

- Redband genetics survey
- Fish Passage evaluations for 2 man-made barriers
- Alternatives analysis
- Aquatic Resource Delineation
- Design development and review by key stakeholders
- Streamflow Restoration Grant (Washington State Dept of Ecology)
- Preliminary Cultural Resources review



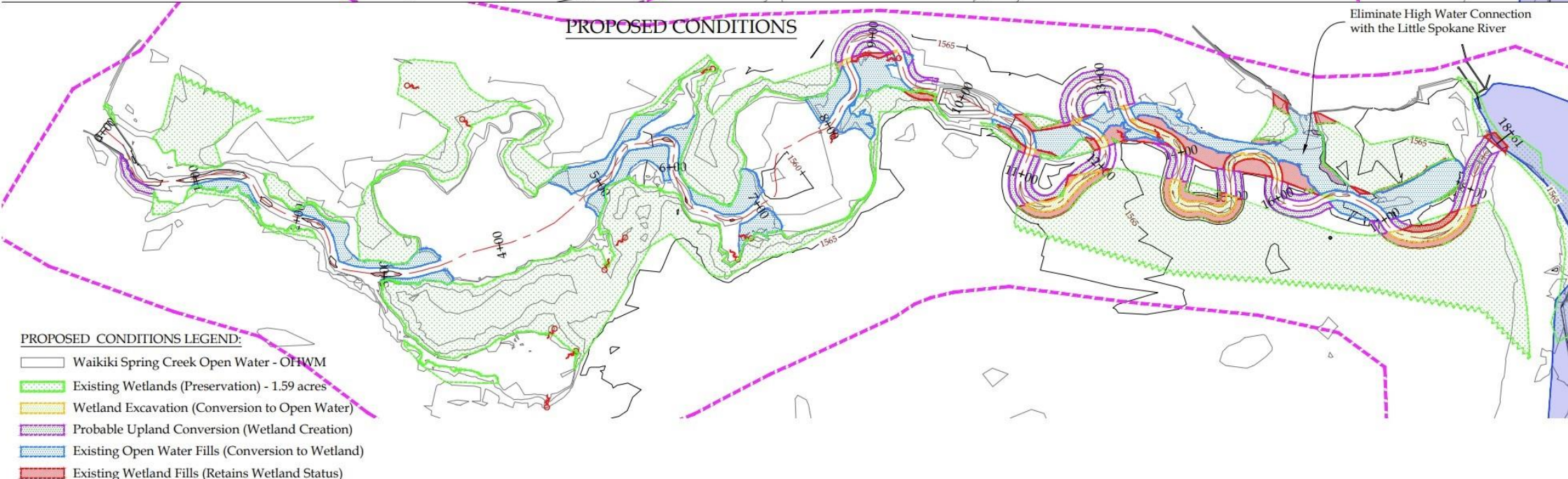
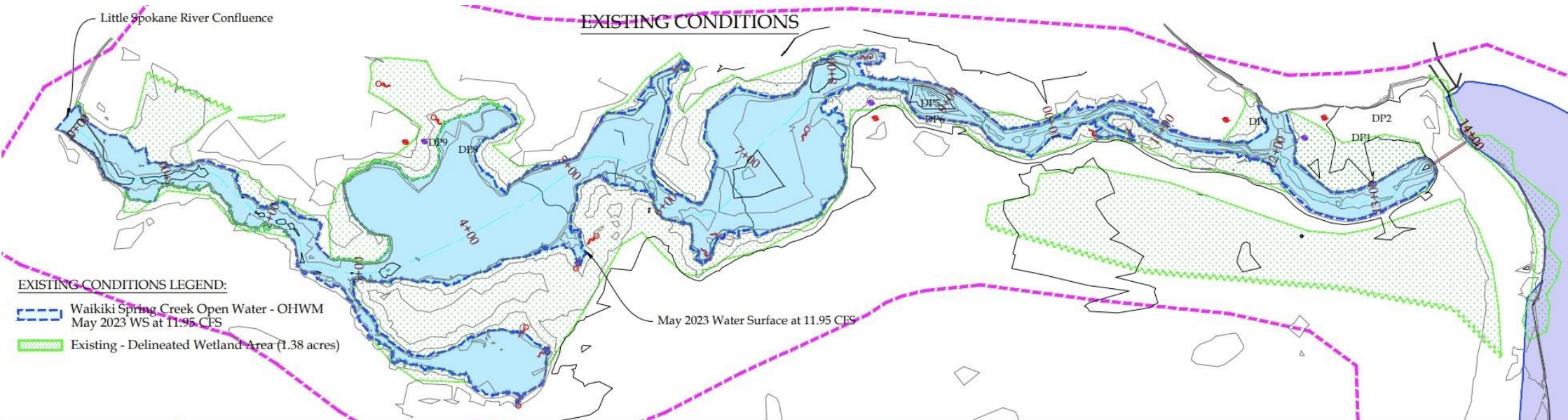
# Fish Passage Correction



Step Pool Channel Type

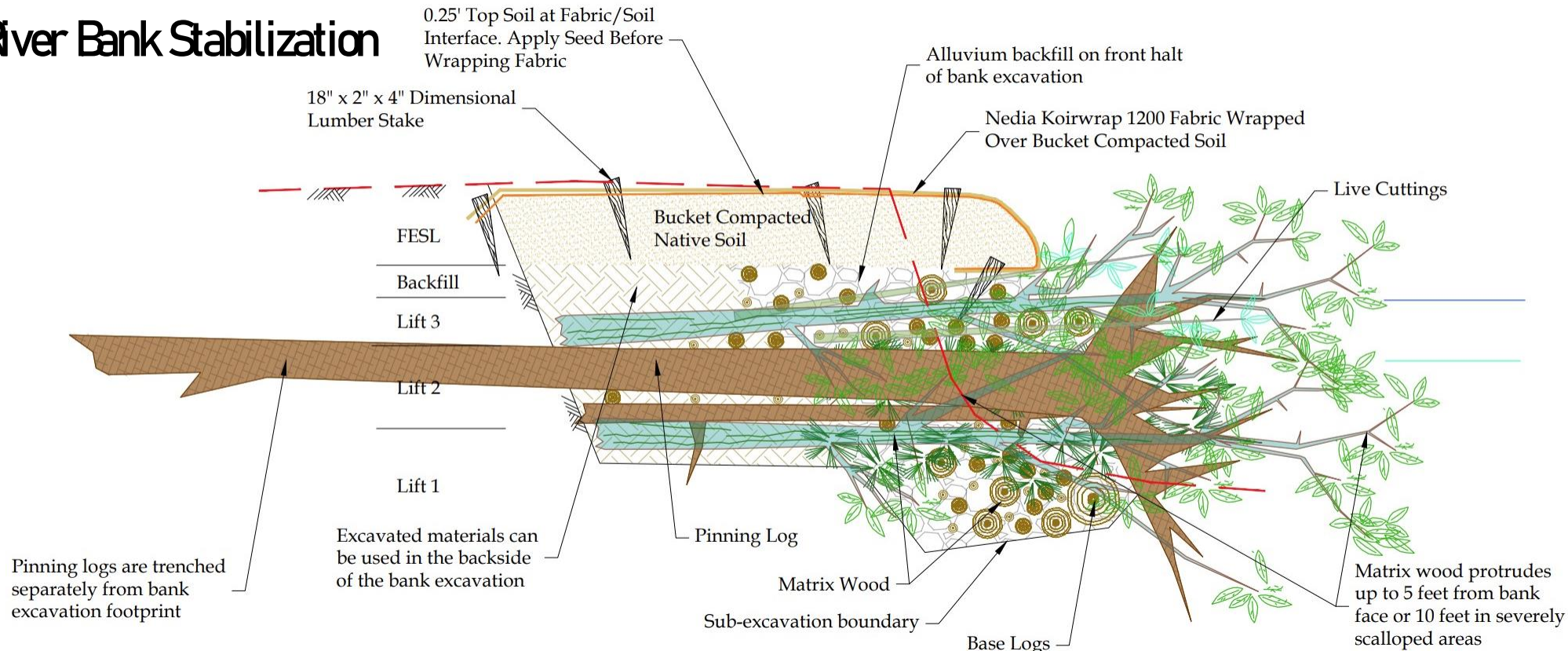


# Channel Restoration





# Little Spokane River Bank Stabilization







## Riparian Planting by Spokane Conservation District - April 2023

- 1,200 trees and shrubs planted along ~1,000' of mainstem LSR
- 35' buffer
- Assisted by Inland Northwest Land Conservancy (INLC) and awesome volunteers!



# Next Steps

- Permitting
- Cultural Review
- Construction
- Monitoring







Photo by Dan Pelle/The Spokesman Review



Spokane Tribe  
of Indians

[emma.greenwood@spokanetribe.com](mailto:emma.greenwood@spokanetribe.com)

(509) 209-2662