

# Spokane Urban River Experience

## SURE



# The WHY

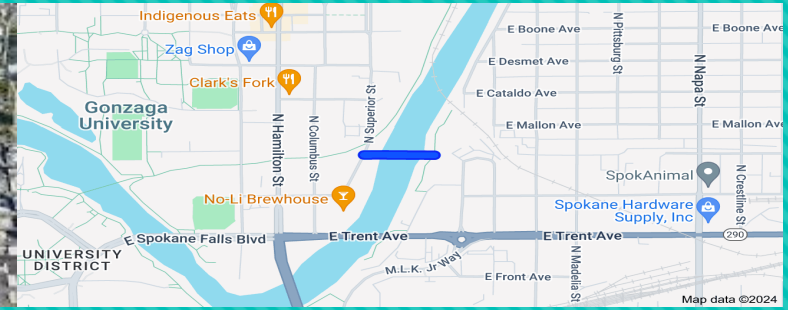
**Spokane has a world-class set of Natural Assets, Built-out Amenities and Public Spaces in its Urban Core**

- Largest Urban Falls in the Nation
- Nationally Ranked EXPO-Legacy Downtown Park
- Unmatched Entertainment, Sports and Tourist Facilities
- Nationally Recognized Universities on Both Sides of the River
- Incredible Urban River Trail System
- Kendall Yards Award Winning Downtown Community

# The WHY

By bringing these community assets Together under one Partnership, we can better maximize our Economic, Environmental and Quality of Life outcomes for the Spokane region

# The WHERE



The 3-mile stretch of the Spokane River from the Sandifur Bridge to Iron Bridge, and the neighboring public spaces along that stretch.

# The HOW



## ○ Partnership Options Considered

- New Organization – i.e. Conservancy or Non-Profit
- Extend Riverfront Park Boundaries to Encompass 3-Mile Stretch
- Partnership/Consortium of Key ‘Owners’

# Current Partners

- Parks
- Public Facilities District
- Avista
- Gonzaga
- University District
- Kendall Yards
- Innovia Foundation
- Centennial Trail
- River Forum
- Downtown Spokane Partnership
- Visit Spokane
- Greater Spokane Incorporated





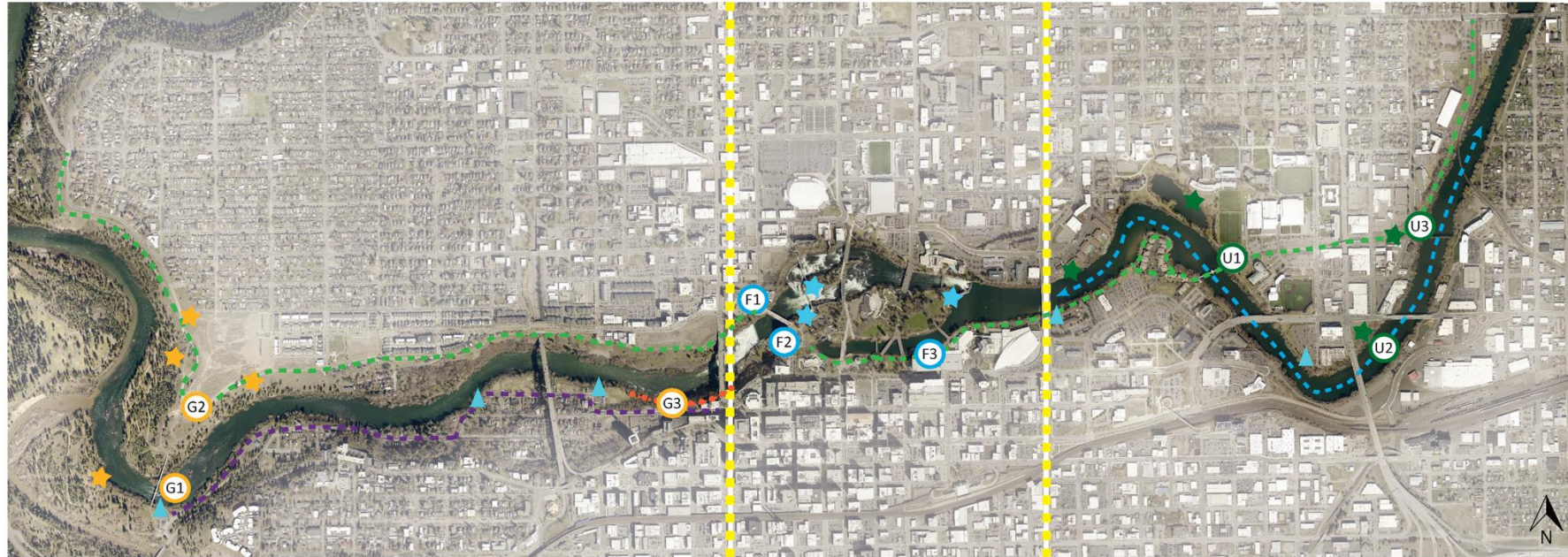
# The WHAT - Proposed Strategic Goals

- **GOAL 1** – Activate the Urban River Corridor with Additional Amenities and Activities
- **GOAL 2** - Brand/Market this Under One Unified Identity
- **GOAL 3** - Address Mobility to Connect To and Thru this Corridor
- **GOAL 4** - Increase Emphasis on Safety throughout Corridor
- **GOAL 5** - Continue to be Good Environmental Stewards of these Assets

## THE GORGE REACH (G)

## THE FALLS REACH (F)

## THE UPRIVER REACH (U)



G1 G3 WHITEWATER EXPERIENCE



G2 KENDALL YARDS PRIORITY PROJECT  
OVERLOOK OR HIGH BRIDGE MP



G3 GORGE ZIP LINE



F1 WEST GATEWAY  
OPPORTUNITIES



F2 AVISTA POWER STATION AND  
DAM TOURS: INTERPRETIVE SITES



F3 EAST GATEWAY/ FLOATING  
STAGE



U1 U2 GONZAGA SOUTH  
CAMPUS ENTRY



U2 U1 UPRIVER ELECTRIC  
BOAT CRUISE/TAXI



U3 U3 IRON BRIDGE  
RIVER PUT-IN

### LEGEND

--- CENTENNIAL TRAIL

▲ NON-MOTORIZED PUT-IN

★ FALLS REACH OPPORTUNITY SITE

--- SOUTH GORGE TRAIL

★ GORGE REACH OPPORTUNITY SITE

★ UPRIVER REACH OPPORTUNITY SITE

### PARTNERS:





# THANK YOU!

