



Riparian Restoration in Hangman Creek

Randy Baker

Riparian Program Leader

Outline



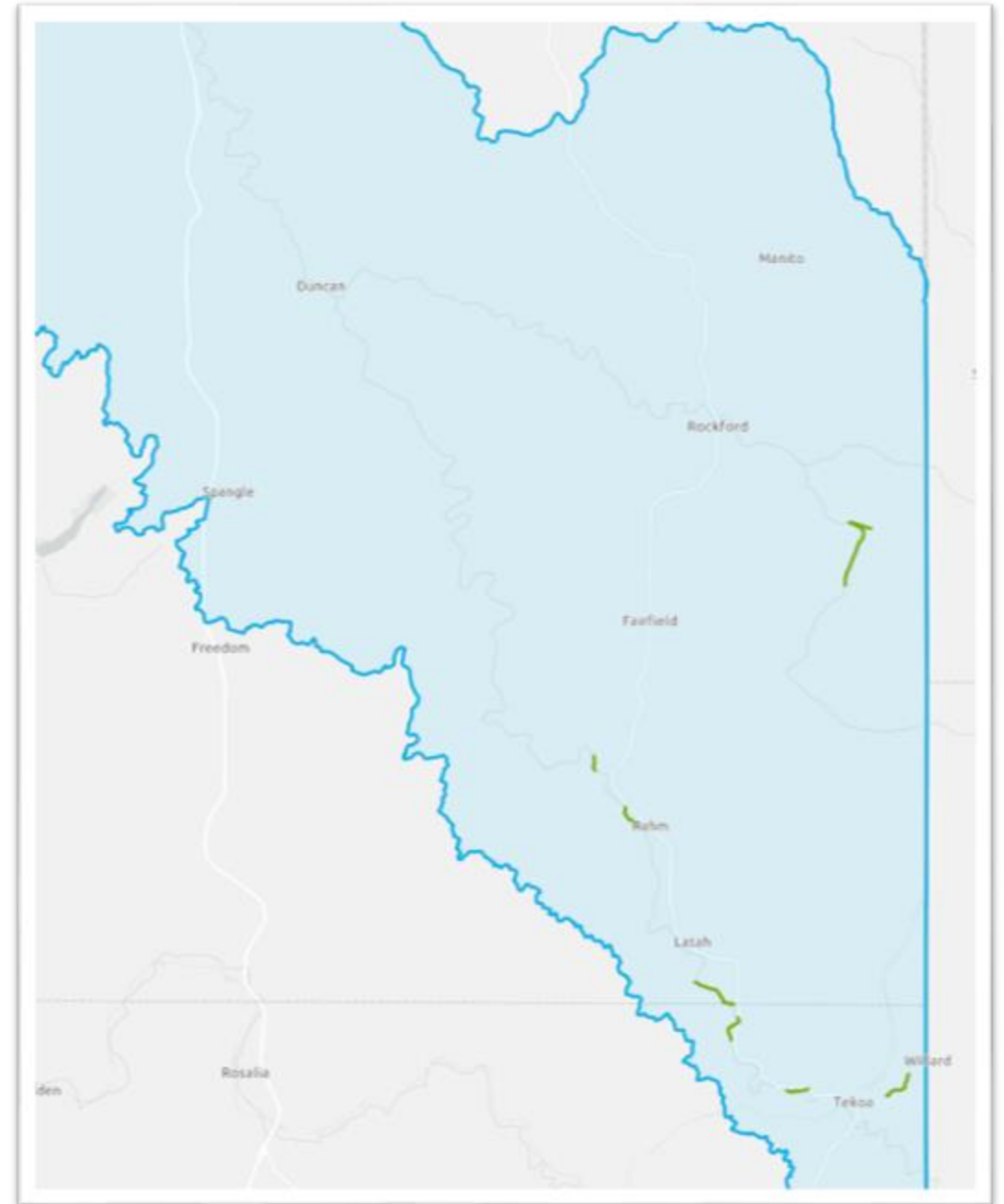
- Riparian Pilot Program Metrics
- Buffer Implementation Process
- Looking Ahead
- Other Programs

CONNECTING
PEOPLE &
RESOURCES

Current Achieved Metrics

- 58 acres initially completed
- 89,000 streambank feet improved
- 42,000 trees installed
- 87 acres of grass seeded
- 5 contracts worked

CONNECTING
PEOPLE &
RESOURCES

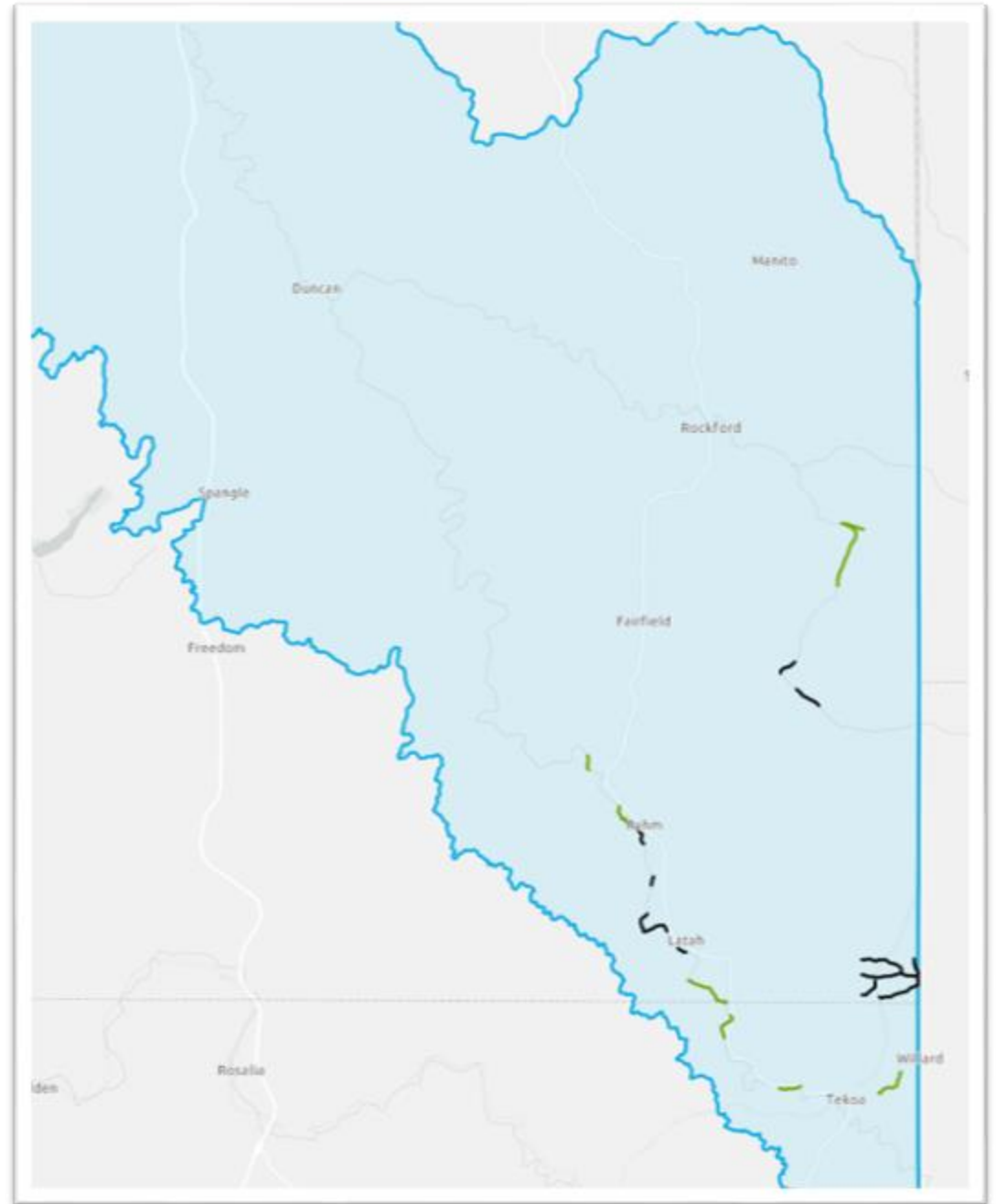




Upcoming Metrics

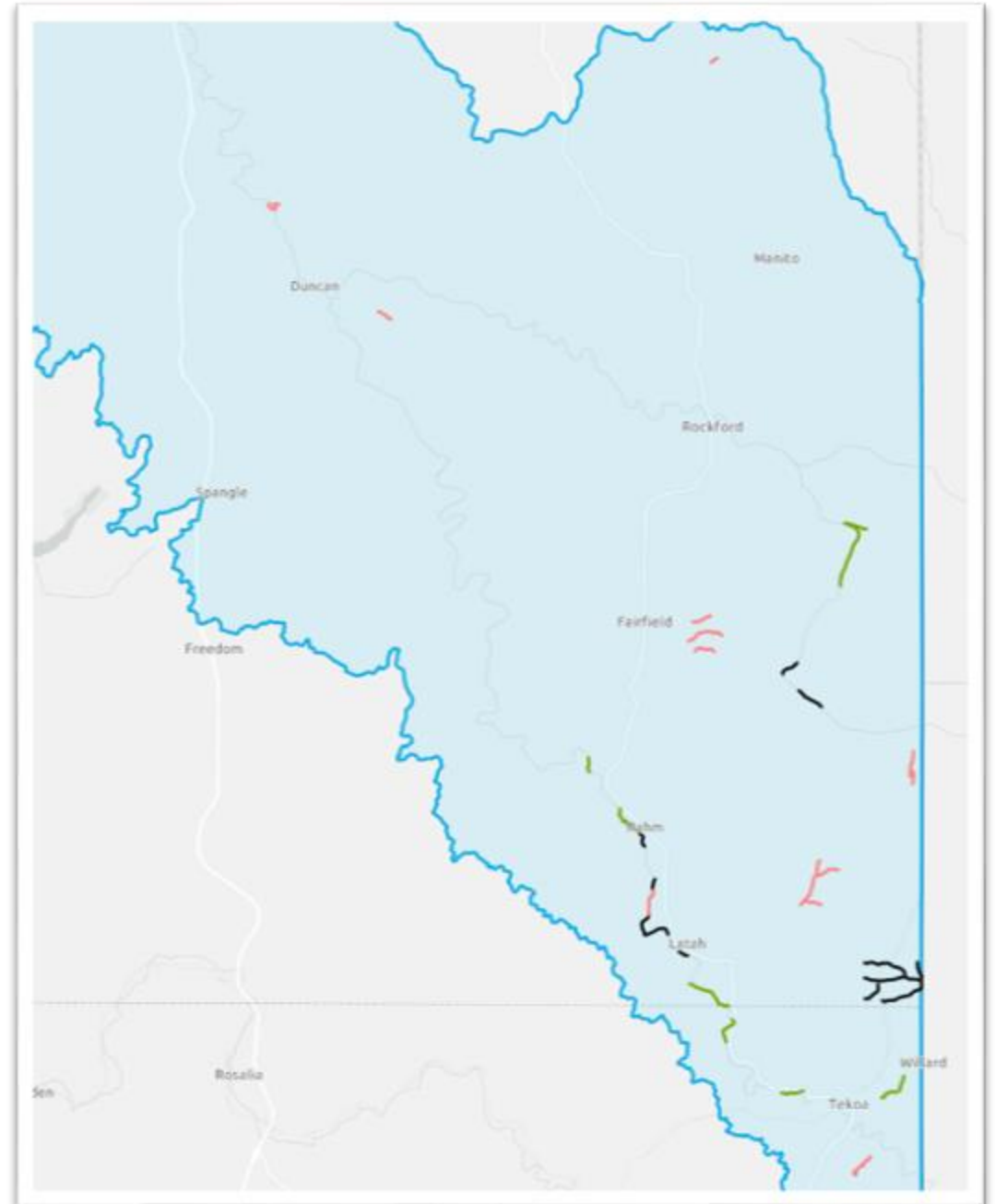
- 247 acres to install
- 104,000 feet of streambank
- 102,000 trees to be planted
- 60 acres of grass to seed
- 8 contracts “unworked”

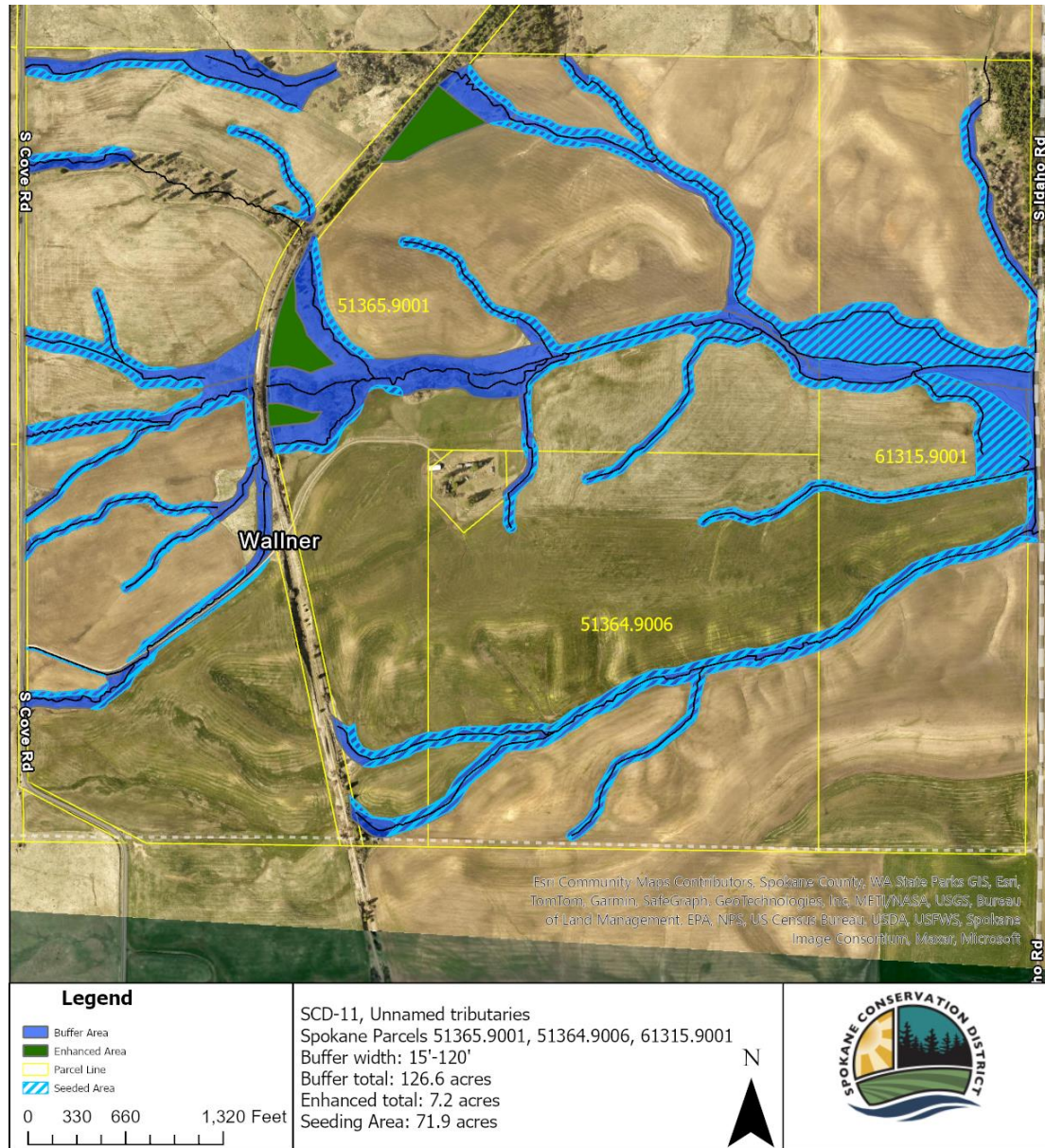
CONNECTING
PEOPLE &
RESOURCES



Upcoming Metrics cont.

- ~125 acres coming into contract
- 8 upcoming contracts





Largest single site at 127 acres
and over 100,000 feet of streambank.



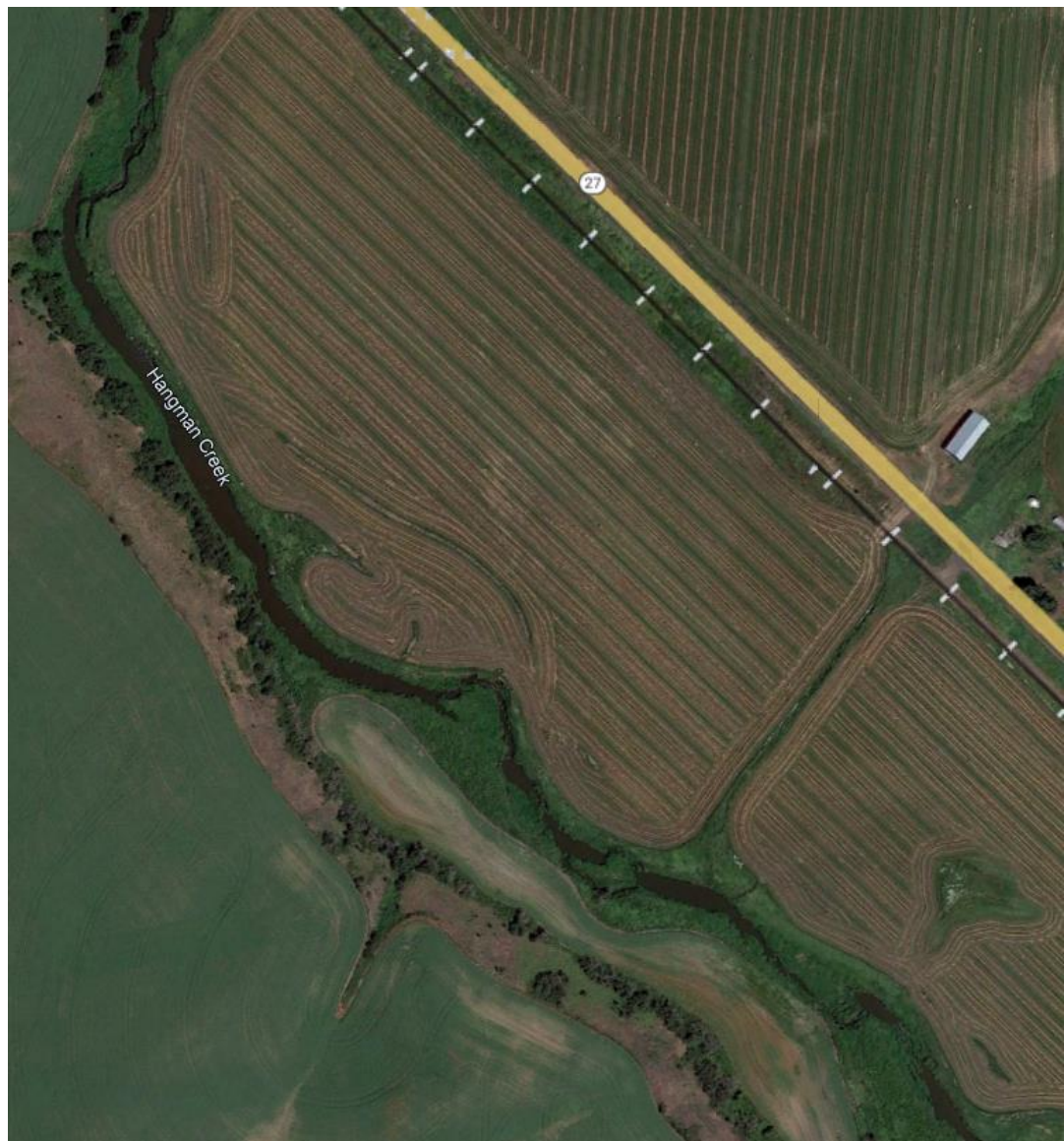
Implementation

- Grass establishment
- Invasive maintenance
- Woody plant establishment
- Post-planting maintenance
- Monitoring
- Adaptive management

Grass Establishment and Maintenance

- Native Seed Mix
 - Mountain Brome
 - Idaho Fescue
 - Bluebunch Wheatgrass
 - Slender Wheatgrass
 - Sherman Big Bluegrass
- Producer assisted sowing and broadcast chemical weed control (Compensated)
- Ideally 1-year old before moving to Tree and Shrub installation





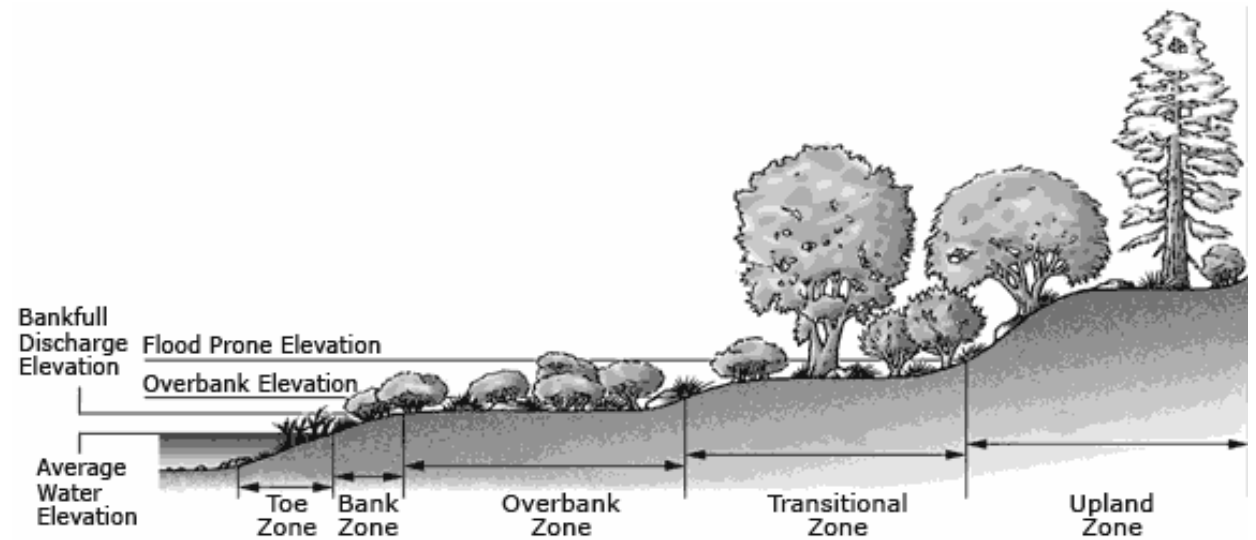
2022



2023

Tree and Shrub Installation

- All native species
 - List based on site specifics and reference sites
- Bank and overbank zones planted in Spring
 - Water table access
- Transitional and upland zones planted in Fall
 - Precipitation assisted





2020



2023

Tree and Shrub Maintenance

- Continued competition control
 - Mowing
 - Chemical spot treatment
- Adaptive predation management
 - Voles
 - Deer/Elk
 - Beaver
- Replanting as needed with modified species list
- Lots of watering!



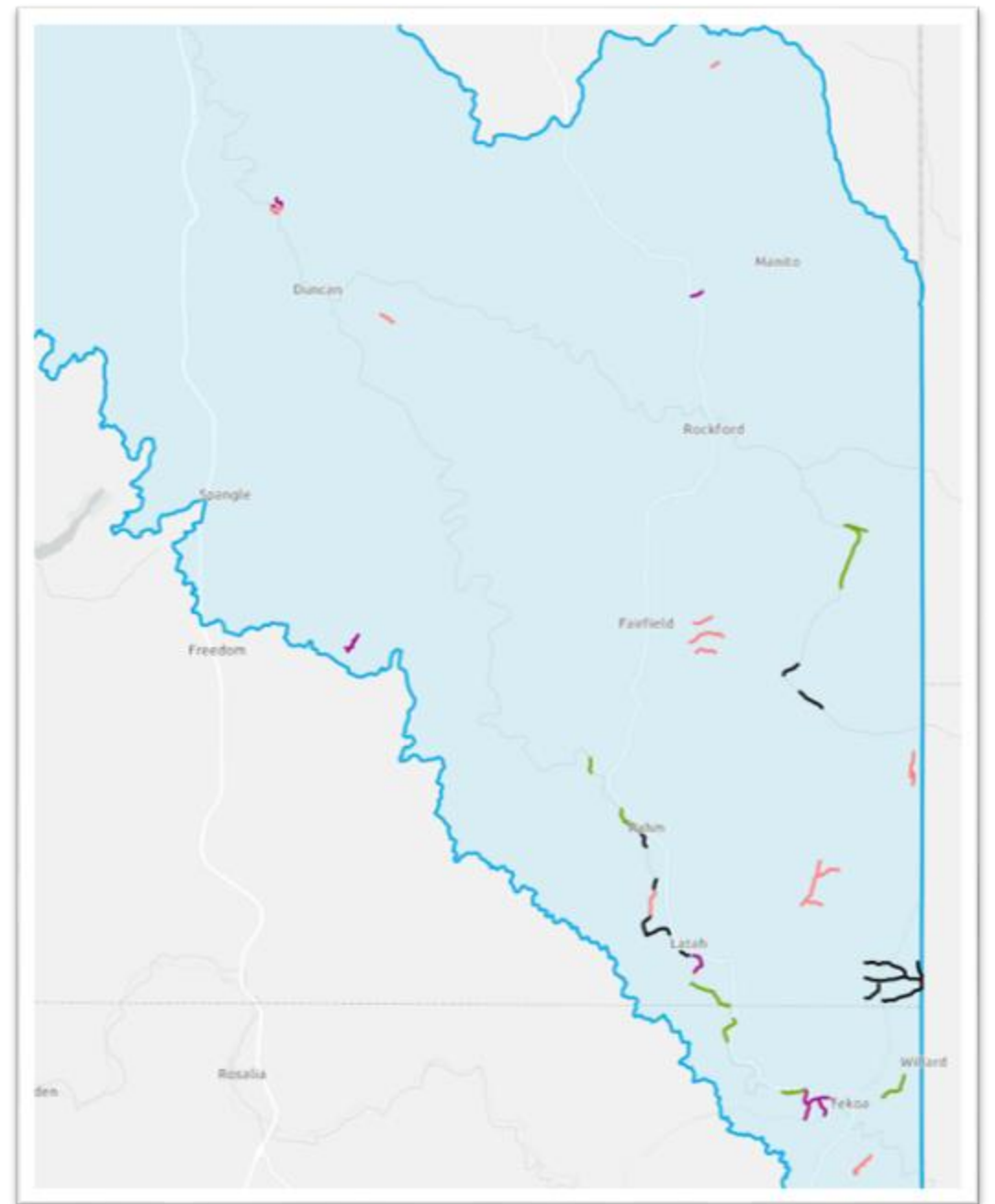
Monitoring and Adaptive Management



- Survey for survival and recruitment
- Ensures we meet goals
- Adapt to conditions at each site
 - Modify plant list
 - Modify maintenance schedule
 - Improve predation controls
- Ensure budgets match site needs

Looking Ahead

- More producers involved
 - Funding still needed
 - Acres in talk
 - Landowners
- Normalization
 - Voluntary enrollment
- Continued changes to implementation practices
 - More crews
 - Contracting with The Lands Council
 - Planting and maintenance methods
 - BDAs?



Other Programs

- Commodity Buffer Program
- Conservation tillage
- Streambank stabilization

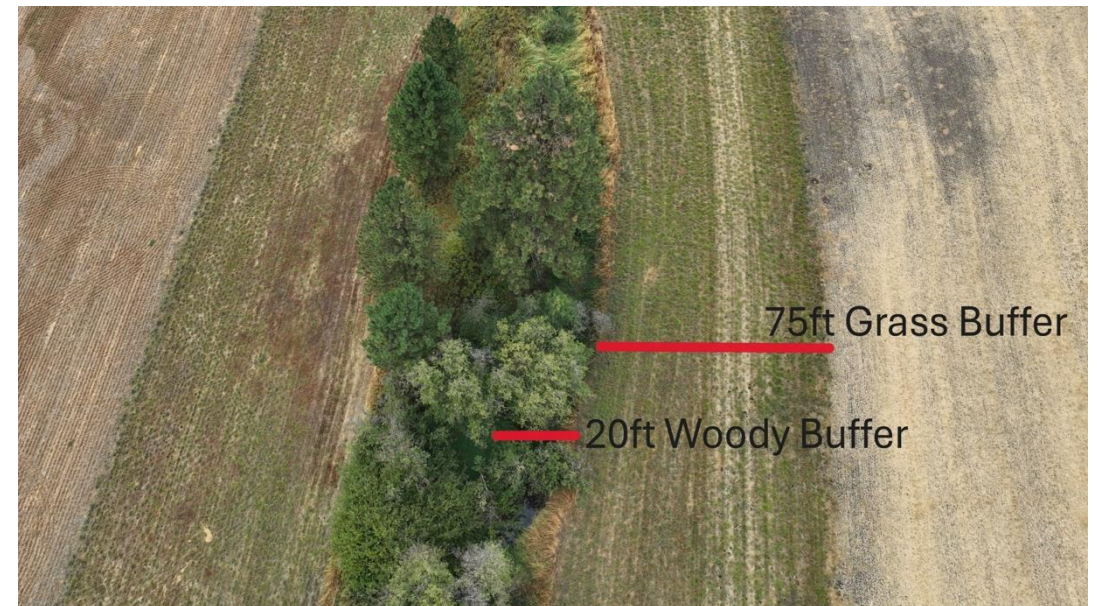


Commodity Buffer Program

- Can be a perennial grass-only buffer
- Helps reduce sediment and nutrient load
- More approachable option for ephemeral or intermittent streams
- Not a substitution for trees and shrubs

Jacob Taylor
Jacob@spokanecd.org
509-535-7274 ext. 240

CONNECTING
PEOPLE &
RESOURCES



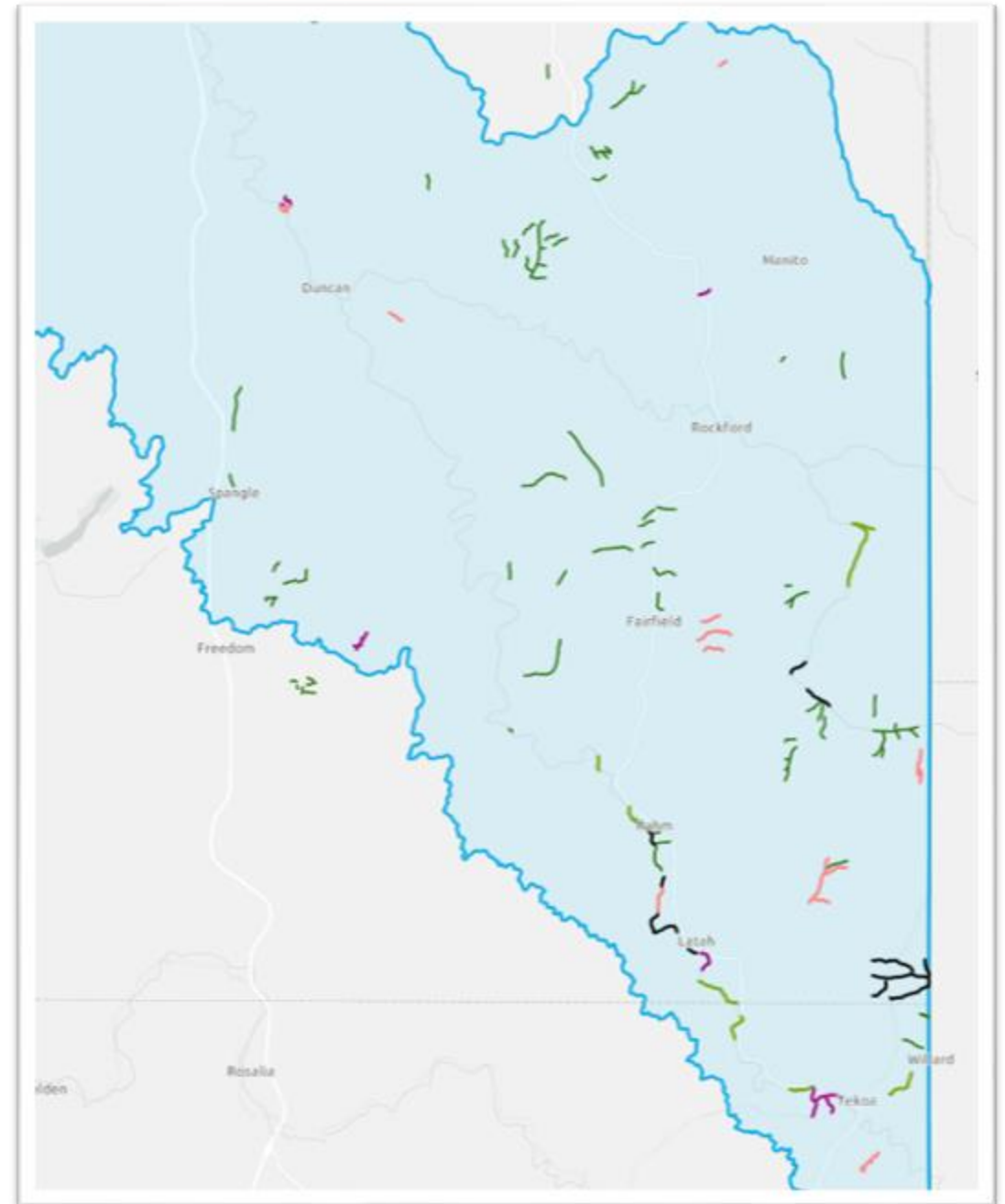
Commodity Buffer Program

- Acres implemented
- Streambank miles protected
- Average compensation per acre

Jacob Taylor

Jacob@spokanecd.org

509-535-7274 ext. 240



Conservation Tillage

- Reduced tillage equipment loans
- Greatly reduces splash and rill erosion
- Increases water capacity of soils
- Potential to reduce need for fertilizer and pesticides
- Reduced fuel consumption

Ty Meyer

Ty-Meyer@spokanecd.org

509-535-7274 ext. 228



Streambank Stabilization

- Erosion reduction in volatile reaches
- Potential for improved floodplain access
- Bioengineered

Dan Ross

Dan-Ross@spokanecd.org

509-535-7274 ext. 229





**SPOKANE
CONSERVATION
DISTRICT**

Questions?

Randy Baker

Randy-Baker@SpokaneCD.org

509-535-7274 ext. 220
