

SpoCanopy



Protecting our river and community through free trees.

Justyce Brant

Urban Forestry Program Director

The Lands Council





THE LANDS COUNCIL



SpOCanopy



City of
Spokane



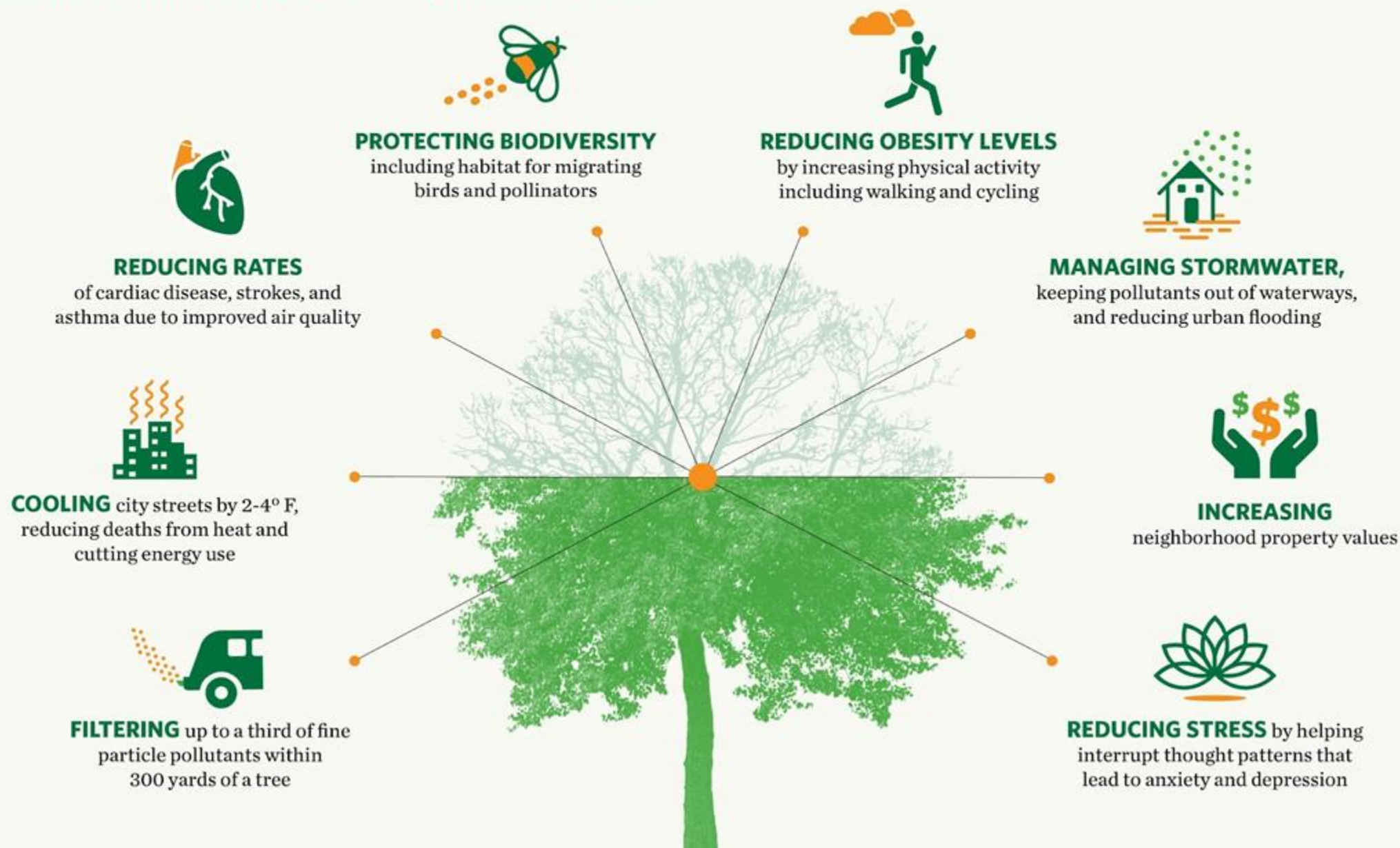
Spokane
County

Cool Canopy



Benefits of Urban Trees

Research has linked the presence of urban trees to...



TREES & COMMUNITY



Safety: Residents with nearby trees and natural landscapes reported 25% fewer acts of violence.



Value: Having large trees along streets increases a home's value by 12%.



Savings: Trees reduce U.S. residential energy use by an average of 7.2% – an annual savings of \$100 for an average household.

THE SIZE AND POWER OF 100 MILLION TREES

The Size: 3,500 Central Parks

The Impact: 578,000 tons of chemical pollution removed from the air – enough to fill 70,000 Goodyear blimps



A TREE PLANTED TODAY MAKES LIFE BETTER FOR GENERATIONS TO COME.



Healthier Environment

Forests provide 75% of the world's accessible fresh water by removing impurities and preventing erosion.



Healthier Economy

Forests contribute \$33 trillion to the global economy each year.



Healthier Society

1/4 of modern medicine is derived from tropical forest plants, including treatments for diseases like cancer, malaria, and rheumatism.





Forest Service
U.S. DEPARTMENT OF AGRICULTURE

Pacific Northwest Research Station | Issue 263 | February 2024

Science

FINDINGS

INSIDE

Exploring Tree Planting and Mortality Links . . . 2

Return on Investment 3

Increasing Urban Greenness 4

"Science affects the way we think together."
Lewis Thomas

Plant a Tree and Save a Life?

The Value of Planting More Trees in Urban Areas



IN SUMMARY

Exposure to urban trees is associated with improved public health outcomes, including healthier infant birth weights, fewer symptoms of attention-deficit hyperactivity disorder, and decreased cardiovascular mortality. Conversely, tree loss is linked to increased rates of cardiovascular disease and higher mortality. Could this mean that trees save lives?







Stormwater Runoff Pollutes



Runoff
from Roof

Runoff
from
Gutters

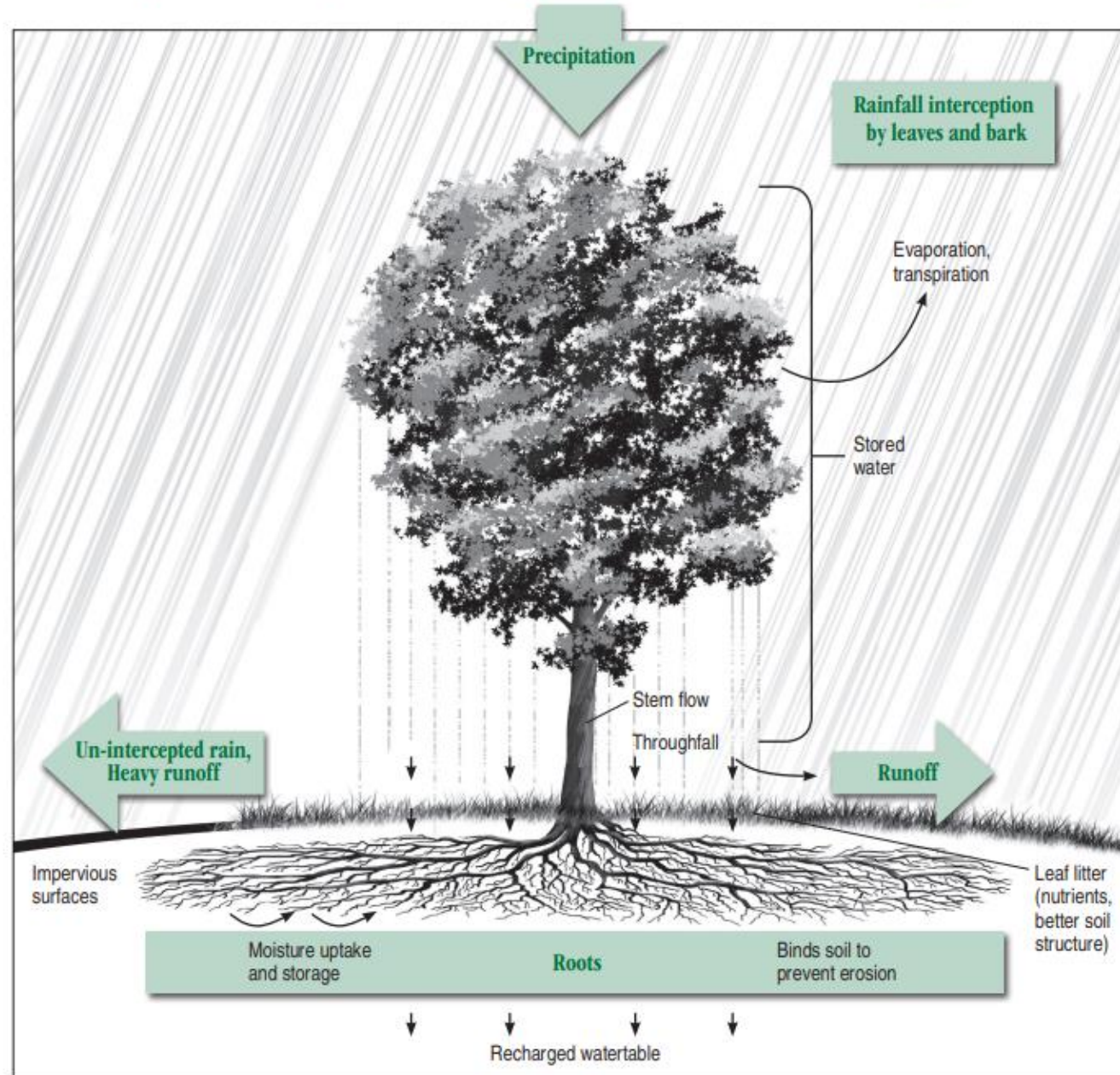
Runoff
from
Street

RUNOFF PICKS UP:

- Pet Waste
- Fertilizers
- Motor Oil
- Detergents
- Chemicals
- Litter

STORMWATER RUNOFF
CARRIES POLLUTANTS
INTO OUR WATERWAYS.

Important Ways a Tree Helps with Stormwater Management



Trees as a measure of equity



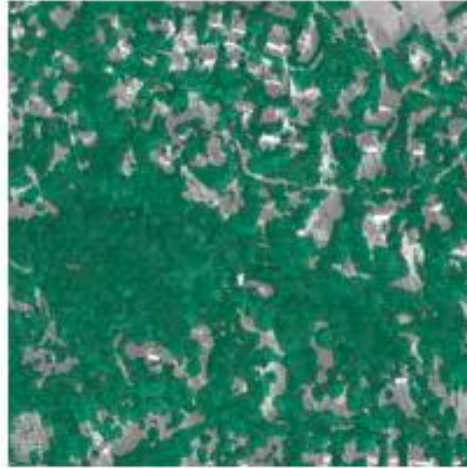
Median Income and Canopy Coverage

Baltimore

Median income: \$31K



Median income: \$154K

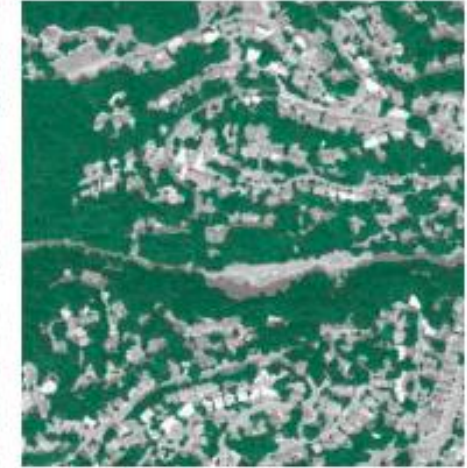


Portland, Ore.

Median income: \$39K



Median income: \$161K

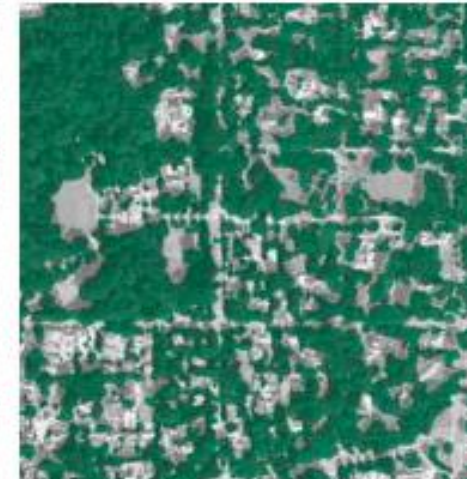


Columbus, Ohio

Median income: \$38K



Median income: \$150K

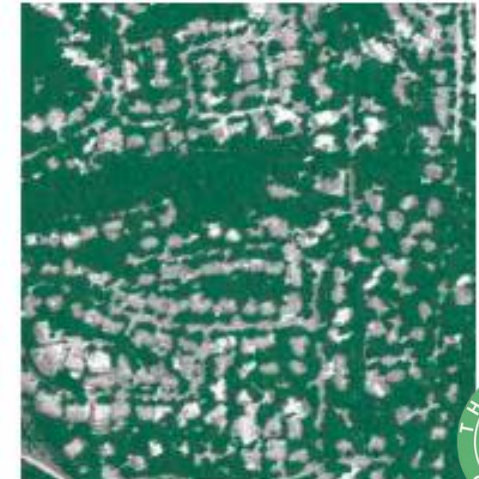


Austin, Texas

Median income: \$59K



Median income: \$185K





City of Spokane Tree Canopy Cover and Ecosystem Benefits

20.7%

Tree Canopy Cover

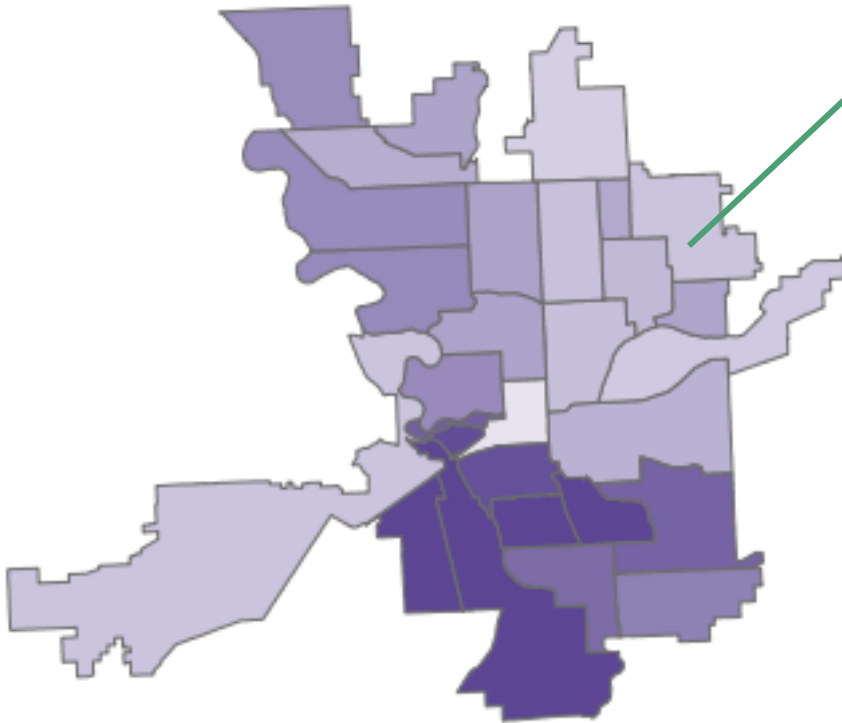
\$5.77M

Estimated Annual Ecosystem Benefits

\$44.39M

Additional Lifetime Stored Carbon Value

City of Spokane Tree Canopy Cover by Neighborhood for 2020



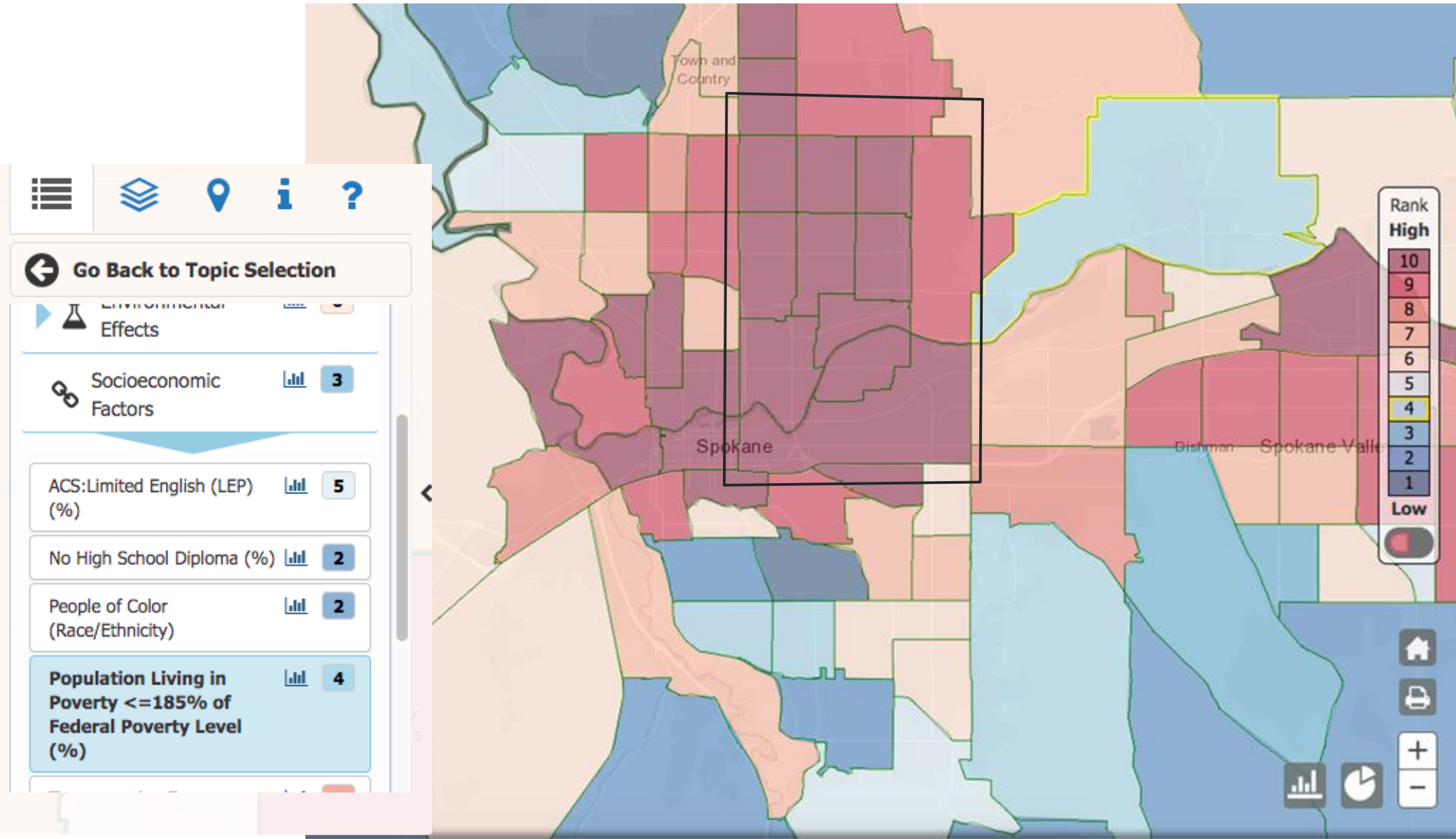
Council District	Tree Canopy Cover	Annual Ecosystem Benefits	Additional Lifetime Stored Carbon Value
1	13.9%	\$1,096,950	\$8,439,583
Bemiss	14.9%	\$89,344	\$7,045,189
Chief Garry Park	12.1%	\$154,804	\$1,238,421
East Central	16.1%	\$237,490	\$1,907,912
Hillyard	13.1%	\$147,897	\$1,183,178
Logan	13.9%	\$104,247	\$842,776
Minnehaha	18.4%	\$64,770	\$522,176
Nevada Heights	13.7%	\$113,010	\$908,081
Shiloh Hills	11.2%	\$147,762	\$1,182,100
Whitman	17.5%	\$37,626	\$301,012

2	20.0%	\$1,463,666	\$11,709,318
Browne's Addition	32.9%	\$38,037	\$309,659
Cliff-Cannon	32.2%	\$150,442	\$1,203,535
Comstock	27.7%	\$188,719	\$1,509,696
Grandview / Thorpe	43.9%	\$330,971	\$2,647,475
Latah / Hangman	35.7%	\$837,879	\$6,702,019
Lincoln Heights	29.1%	\$366,627	\$2,932,880
Manito / Cannon Hill	38.5%	\$164,385	\$1,314,918
Peaceful Valley	29.9%	\$30,106	\$242,850
Riverside	7.8%	\$32,325	\$260,653
Rockwood	38.1%	\$190,115	\$1,521,682
Southgate	24.4%	\$227,425	\$1,819,400
West Hills	13.2%	\$650,781	\$5,206,305
3	20.8%	\$1,463,666	\$11,709,318
Audubon / Downriver	23.0%	\$217,060	\$1,736,485
Balboa / South Indian Trail	16.9%	\$121,596	\$972,355
Emerson / Garfield	18.7%	\$127,882	\$1,022,740
Five Mile Prairie	18.6%	\$109,400	\$875,200
North Hill	18.8%	\$150,346	\$1,202,763
North Indian Trail	22.4%	\$293,484	\$2,347,870
Northwest	22.6%	\$311,640	\$2,493,120
West Central	22.7%	\$132,258	\$1,058,065
Total	20.7%	\$5,768,428	\$44,393,583

*Shading Indicates Degree of Canopy Cover

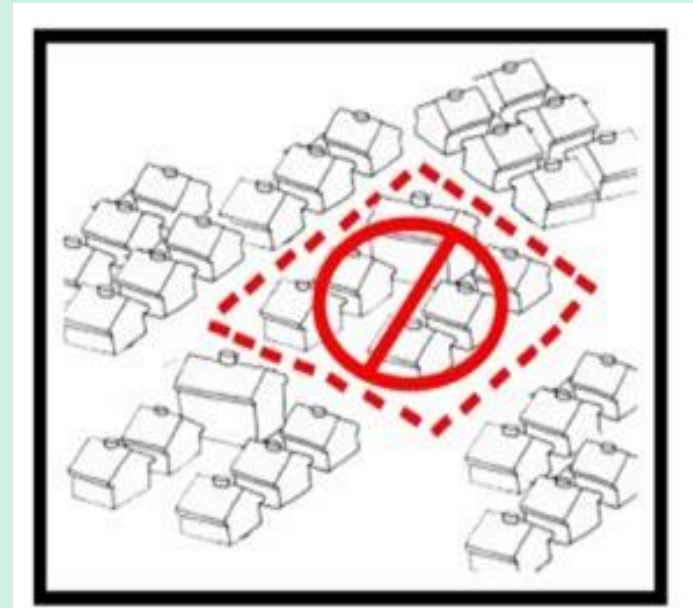
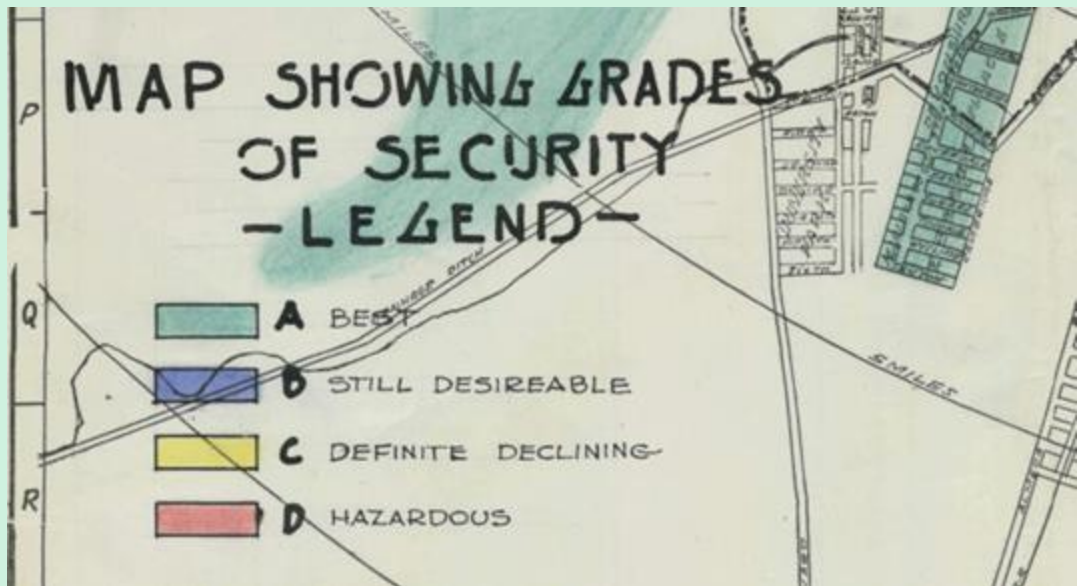


Population living in **poverty**



Quick history: What is **redlining**?

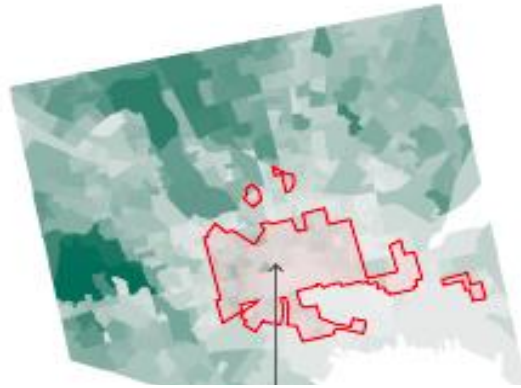
Systemic denial of services and resources to certain communities and neighborhoods either by direct removal, denial of resources or sudden increase of prices.



Baltimore

Share of tree canopy

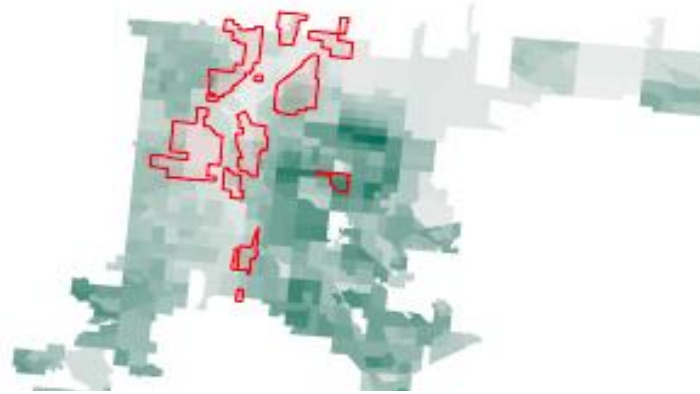
1% 83



Denver

Share of tree canopy

1% 37



Portland, Ore.

Share of tree canopy

2% 81

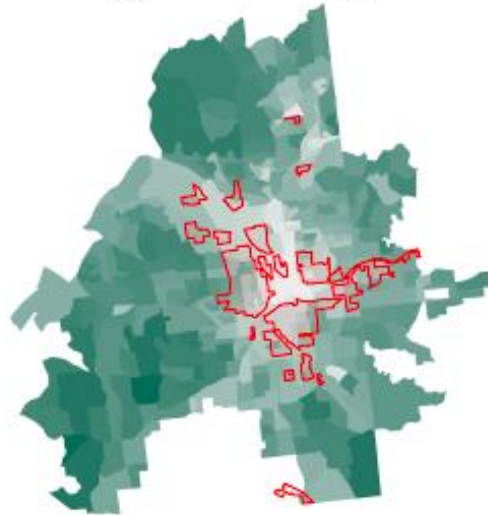


3 miles

Atlanta

Share of tree canopy

7% 81



3 miles

Charlotte, N.C.

Share of tree canopy

4% 80

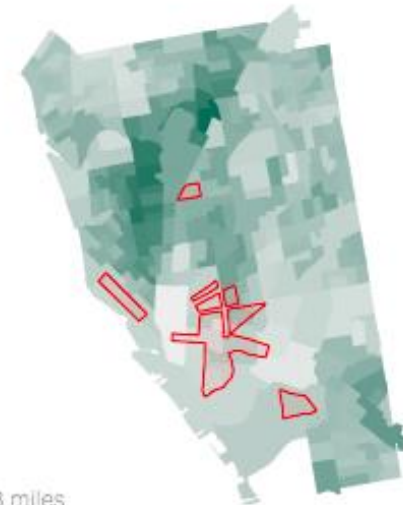


3 miles

Buffalo

Share of tree canopy

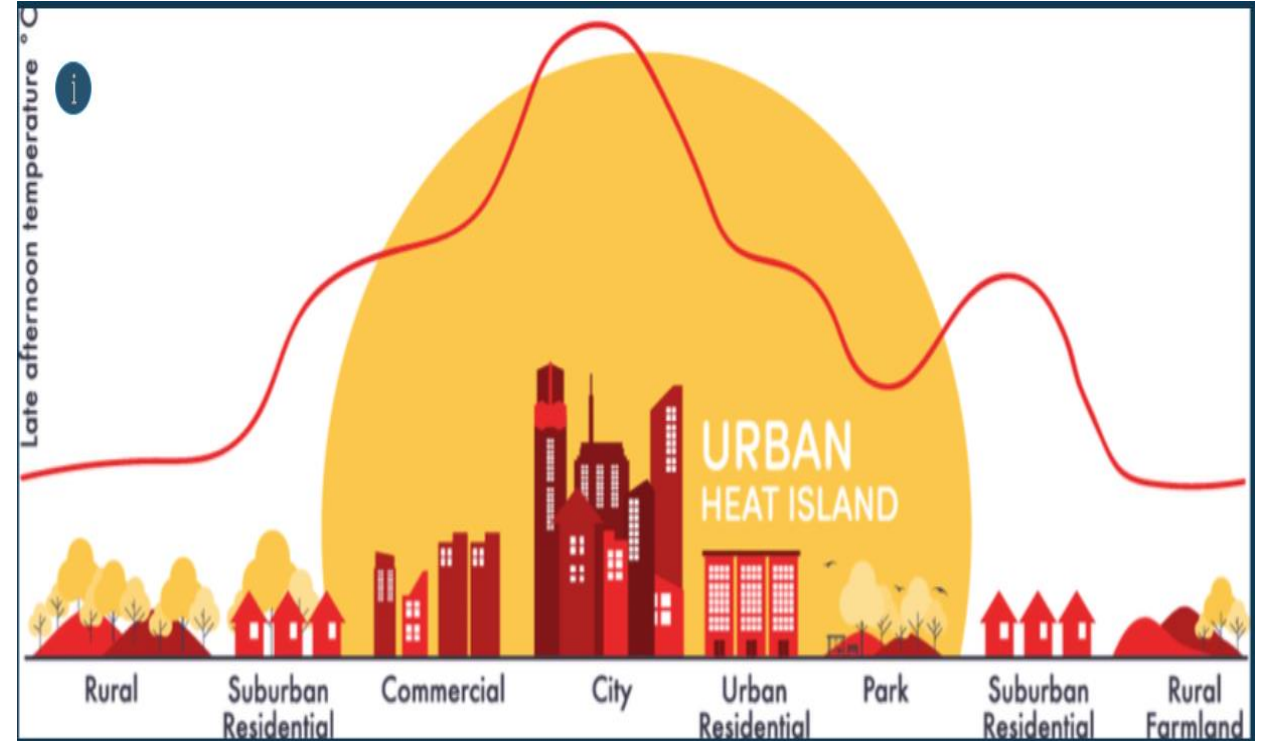
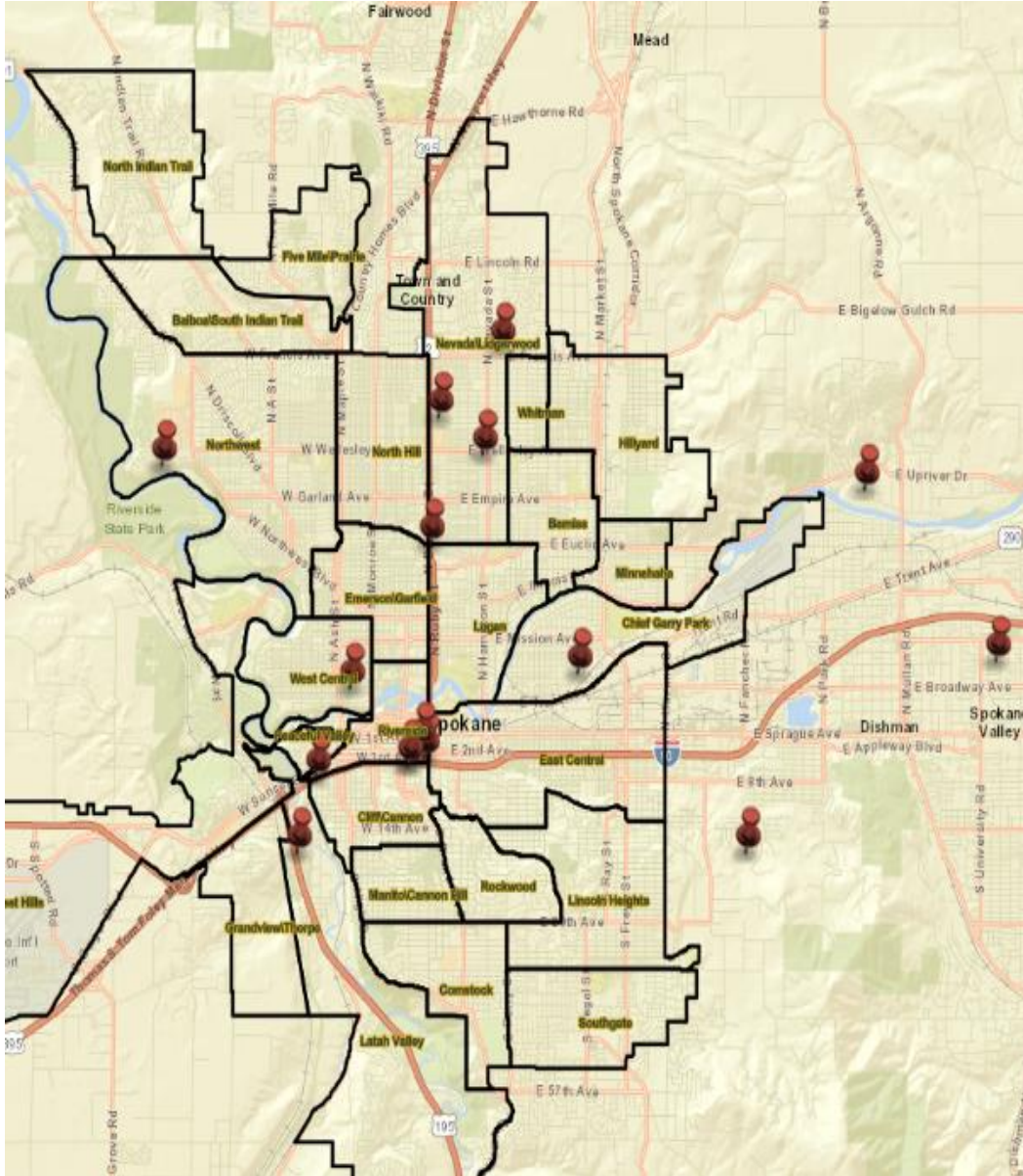
4% 54



3 miles

Sources: American Forests (share of tree canopy), Mapping Inequality (redlining boundaries).





Red pins on the map depict 15 of Spokane County's 19 confirmed heat-related deaths during the 2021 Heat Dome, others occurred within the county, but outside of the image extent or lacked a location in the release from the Medical Examiner.

SpoCanopy's goal is to equitably increase urban canopy by planting street trees in low canopy, low-income neighborhoods



SpoCanopy Process and Phases



1- Start by mapping, prioritizing and planning with an equity lens



2- Canvass neighborhoods, knock on doors and leave information and alert residents on their opportunity for a free tree.



3- Organize resident interest, help residents choose the right tree for the right place.



4- Trees are planted at a community event by volunteers, the City of Spokane and TLC. Volunteers dig, plant and water the trees.



5- The trees are the responsibility of the resident, but throughout the summer Tree Stewards visit the trees to monitor their health and watering.

SpoCanopy Expo-Forest



Any guesses on how many trees we planted last spring?

782!!!



421 Ponderosa Pine (plus an undetermined amount of Rocky Mountain Juniper) seedlings
70 Ponderosa Pines (larger stock)
70 Western Larch
40 Austrian Pine
36 Autumn Brilliance Apple Serviceberry
35 Espresso Kentucky Coffee tree
35 Harvest Gold Linden
20 Forest Green Italian Oak
20 Honey Locust
12 English Oak
10 Norway Maple
8 Douglas Fir
3 Emerald Sunshine Elms
2 Eastern Redbuds



Questions on SpoCanopy & Cool Canopy?



Contact Information

Justyce Brant, jbrant@landscouncil.org

We are here to help! Don't hesitate to reach out!

