

A photograph of a person in a boat holding a large rainbow trout. The fish is held horizontally, showing its iridescent scales and a prominent pinkish-red stripe along its side. The person's hands are visible, and they are wearing a dark jacket. The background is dark, suggesting an indoor or nighttime setting. The text is overlaid on the image.

**Abundance and Year Class Strength of
Spokane River Redband Trout
*Oncorhynchus mykiss gairdneri***

Chuck Lee

Washington Department of Fish and Wildlife

Under Contract with Avista Corporation
and

Partial Funding by Bonneville Power Administration
November 2017



Redband Spawning, Abundance and Discharge Flow Study

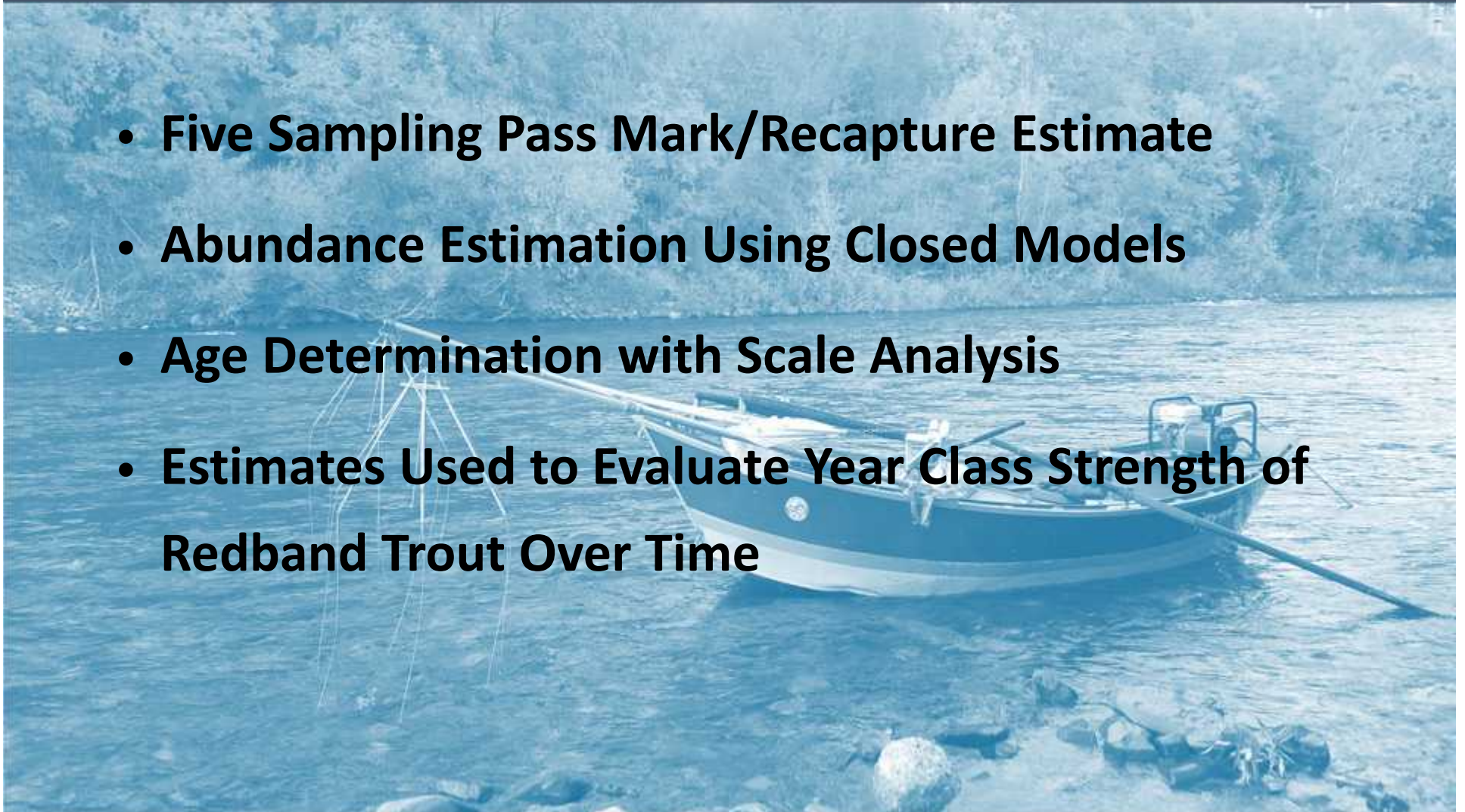
Cardno-ENTRIX, West Fork Environmental, WDFW

- Spawning Patch Inventory (Completed)
- Redband Spawning Observations (Completed)
- Effective Incubation Habitat Modeling (Completed)
- **Redband Abundance Estimates (WDFW 2010 - 2019)**
- Correlate Year Class Strength to Flow (Next)

Redband Abundance Study Elements

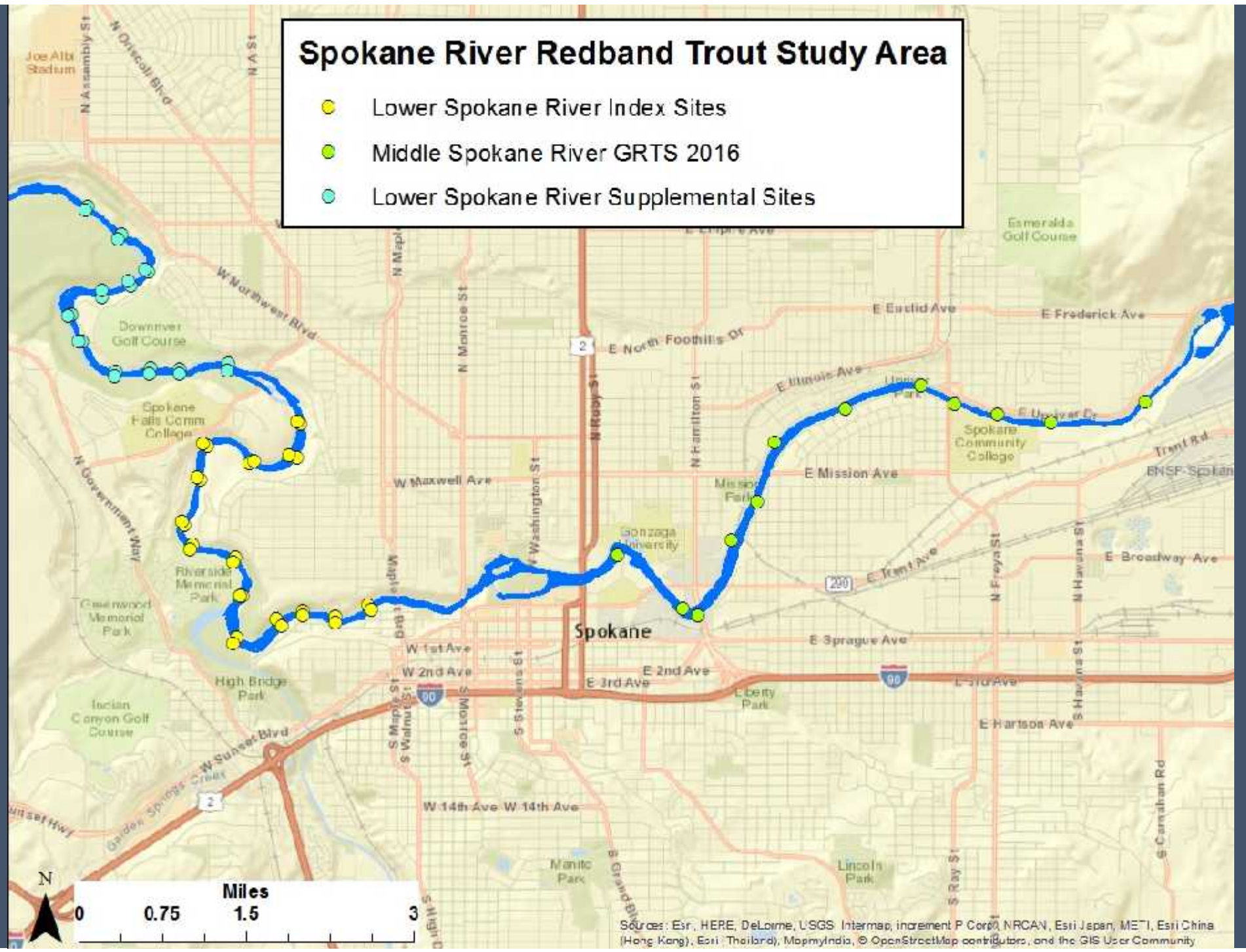
Washington Department of Fish and Wildlife (WDFW)

- **Five Sampling Pass Mark/Recapture Estimate**
- **Abundance Estimation Using Closed Models**
- **Age Determination with Scale Analysis**
- **Estimates Used to Evaluate Year Class Strength of Redband Trout Over Time**



Spokane River Redband Trout Study Area

- Lower Spokane River Index Sites
- Middle Spokane River GRTS 2016
- Lower Spokane River Supplemental Sites

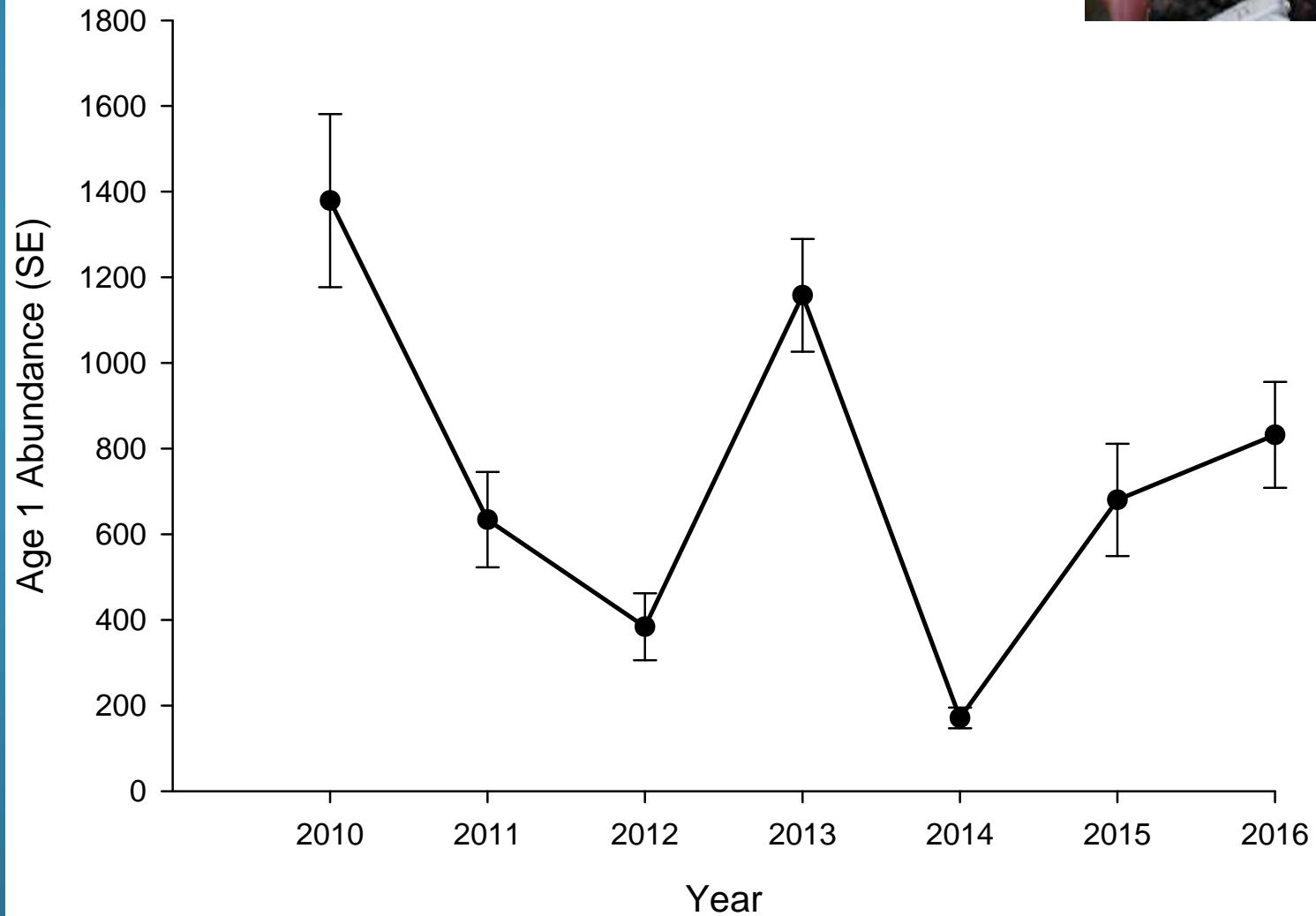


Sources: Esri, HERE, DeLorme, U.S.G.S. Intermap, increment P Corp., NRCAN, Esri Japan, METI, Esri China (Hong Kong), Swisstopo, MapmyIndia, © OpenStreetMap contributors, and the GIS User Community

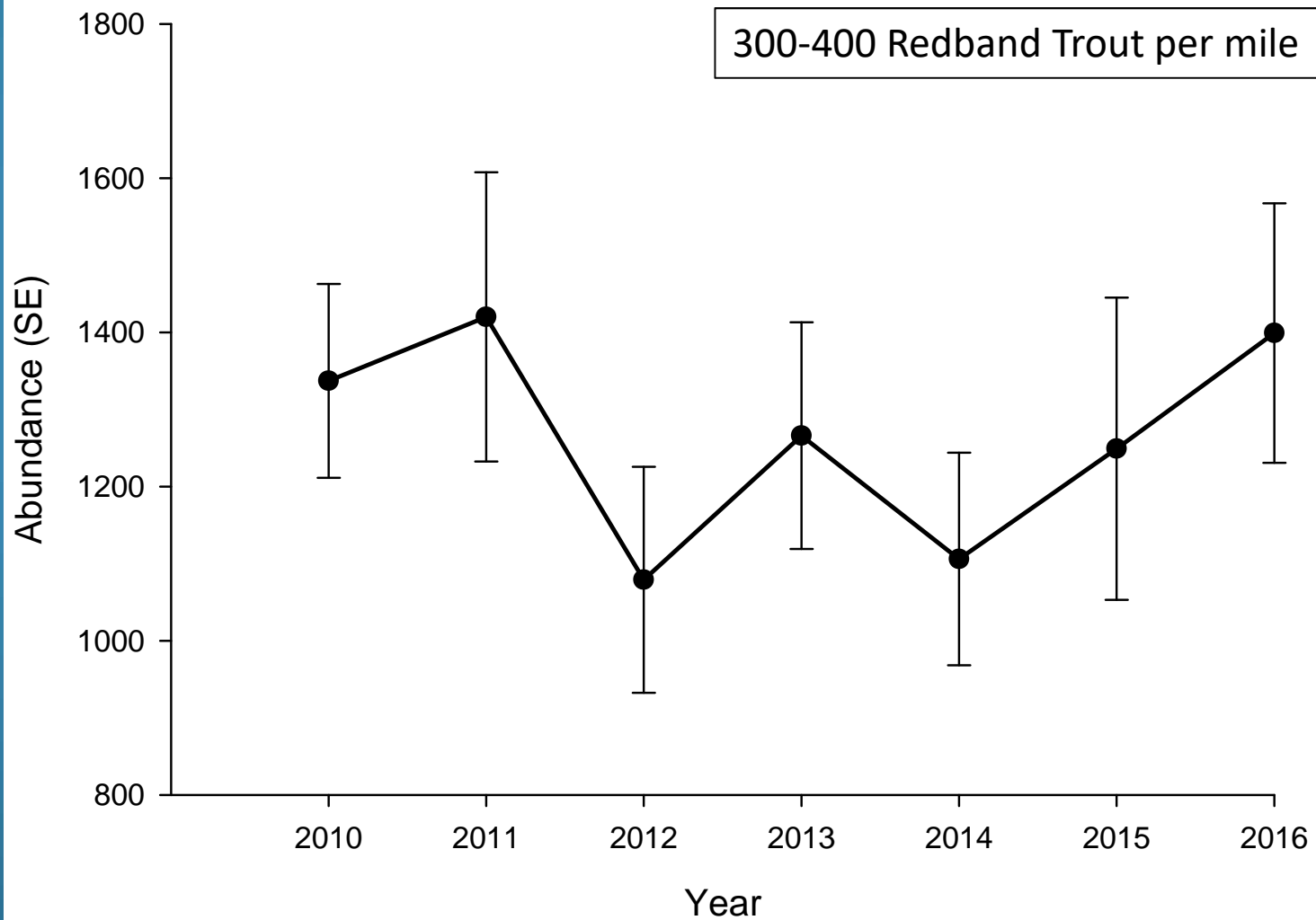
Fish Processing and Data Collection



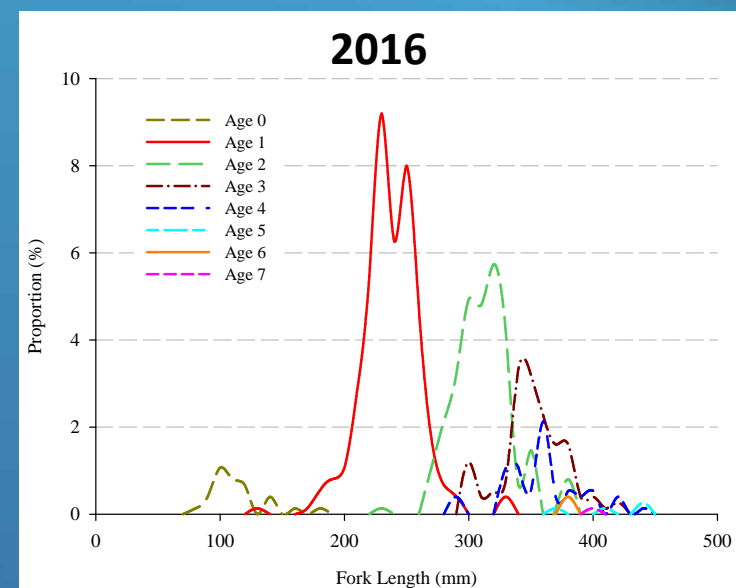
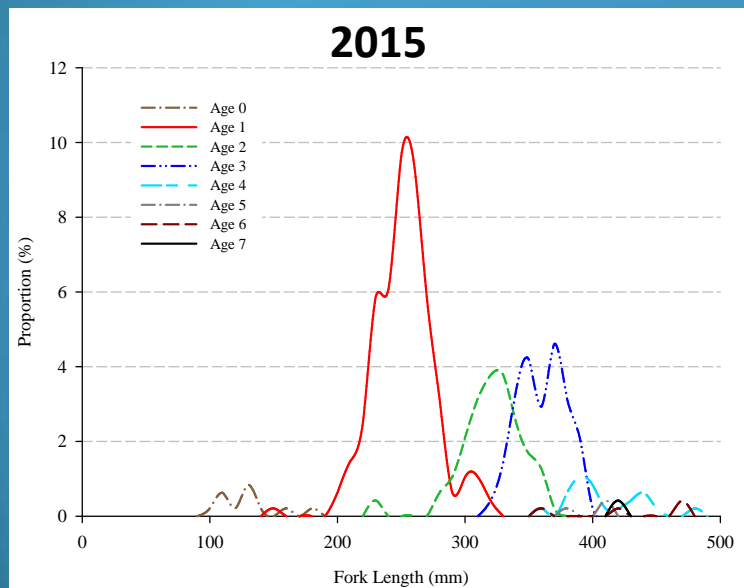
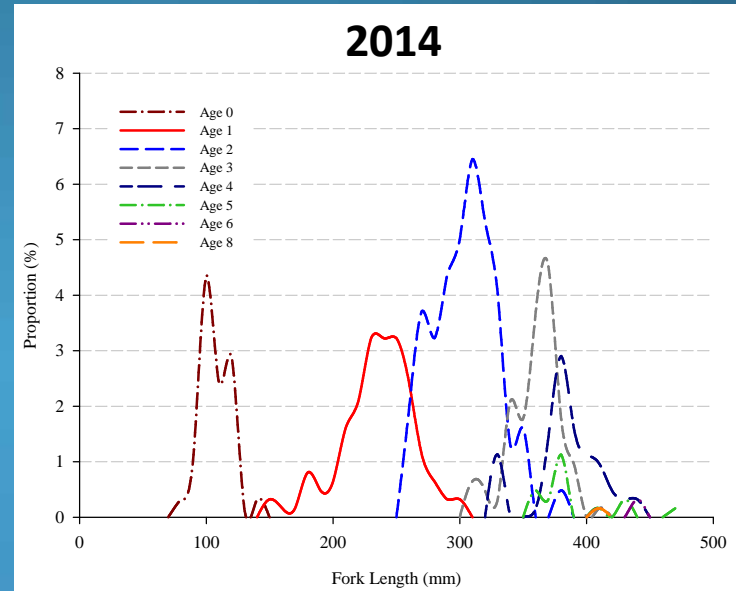
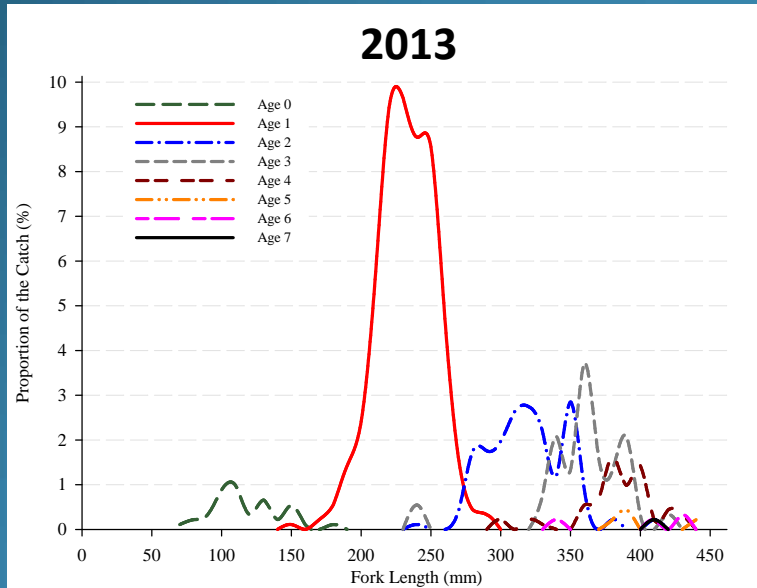
Redband Trout Age 1 Abundance Estimates



Redband Trout ≥ 250 mm Abundance Estimates



Age and Length Frequency Distribution



Abundance Results

- Capture 400 - 750 Redband Trout Annually (Index Area)
- Age 1 Estimates Reduces Potential Error and Provides a Reliable Indication of Year Class Strength
- Estimates Relatively Unbiased
- Year Class Strength Validated Over Time
- Abundance of Larger Trout (≥ 250 mm) Relatively Stable
 - *May Indicate Carrying Capacity under Current River Conditions
- Majority of Redband Spawners are Age 3 and 4



Charles D Lee
Charles.Lee@dfw.wa.gov
(509) 892-1001



Tim P Vore, Environmental Specialist
Tim.Vore@avistacorp.com
(509) 495-8612



Acknowledgements

Jason McLellan, Colville Confederated Tribes
Upriver Dam Staff
City of Spokane Parks
WDFW Staff

References

- Lee, C. D. 2017. Redband Trout spawning and fry emergence study: abundance and year class strength component, annual progress report 2016. Report prepared for Avista Corporation, Spokane, Washington.
- Lee, C. D. 2016. Redband Trout spawning and fry emergence study: abundance and year class strength component, annual progress report 2015. Report prepared for Avista Corporation, Spokane, Washington.
- Lee, C. D. 2015. Redband Trout spawning and fry emergence study: abundance and year class strength component, annual progress report 2014. Report prepared for Avista Corporation, Spokane, Washington.
- Lee, C. D. 2014. Redband Trout spawning and fry emergence study: abundance and year class strength component, annual progress report 2013. Report prepared for Avista Corporation, Spokane, Washington.
- Lee, C. D. 2013. Redband Trout spawning and fry emergence study: abundance and year class strength component, annual progress report 2012. Report prepared for Avista Corporation, Spokane, Washington.
- Lee, C. D. 2012. Redband Trout spawning and fry emergence study: abundance and year class strength component, annual progress report 2011. Report prepared for Avista Corporation, Spokane, Washington.
- McLellan, J. G. and C. D. Lee. 2011. Redband Trout spawning and fry emergence study: abundance and year class strength component, annual progress report 2010. Report prepared for Avista Corporation, Spokane, Washington.

