

City of Spokane Solid Waste Disposal Facility and Services Guide



Information: 509.625.6580
spokanecity.org

- Recyclable materials
- Household Hazardous Waste
- Clean Green materials
- Appliances
- Garbage

Recycling Center

No-cost drop-off:

Items must be sorted for deposit in separate containers.

Newspapers, Phone Books, Magazines & Catalogs

- Clean and dry only

Cardboard & Paper Bags

- Corrugated cardboard only
- Uncoated ("non-shiny") paper bags only, any color

❌ **NO** pizza boxes or waxed cardboard

Other Paper

- Clean & uncoated (*staples and paper clips OK*)
- Paperboard - cereal boxes, shoe boxes, soda boxes, paper tubes, etc.
- Paperback books
- Junk mail & office paper
- Spiral notebooks



Aluminum Cans

- Rinsed & clean, labels OK

Tin Cans

- Rinsed & clean, labels OK

Glass

- Bottles & jars only
 - Rinsed, empty & clean, labels OK
- ❌ **NO** window glass, mirrors, bulbs, ovenware, ceramic, drinking glasses, or eyeglasses

Ferrous Metals

- Tin Plate
- Steel
- Cast Iron

Non-Ferrous Metals

- Aluminum (siding, screen doors, foil & pie plates)
- Brass
- Copper
- Stainless
- Lead

Not Accepted

- ❌ Plastic bags
- ❌ Shredded paper
- ❌ Milk cartons
- ❌ Lids

Materials should be empty, clean and dry.

Recycling Center

Plastics must be sorted into separate containers.

- Empty, rinsed & clean; labels OK
- 4 oz or larger

Code 1 Bottles & Jars

- Water and soda bottles, etc.

Code 2 Bottles & Jars

- Milk jugs, shampoo and liquid detergent bottles, etc.

Other Plastic Bin

- Bottles & Jars - most codes 3-7
- Tubs - all codes (yogurt, butter, dairy, produce)
- Clamshells (bakery, produce)
- Cups & Trays
- Buckets (*no metal*)
- Nursery pots - clean



Not Accepted

- ❌ NO Plastic bags or film
- ❌ NO Styrofoam®
- ❌ NO Motor oil or chemical containers
- ❌ NO Lids

Questions on where to dispose of items not listed here?

SpokaneWasteDirectory.org

Information - 509.625.6580

Household Hazardous Waste

What To Bring

Accepted as HHW (no-cost drop-off):

- Aerosol cans (*if not empty*)
- Automotive batteries
- Automotive liquids - antifreeze, brake fluid, gasoline, oil (*5 gallons or less containers; 15 gallons maximum*)
- Batteries AAAA-D cell, button, lantern, alkaline, lithium ion, rechargeable
- Fire extinguishers
- Fluorescent lighting: CFL bulbs, tubes – limit of 10 (whole only)
- Glues and adhesives
- Household cleaners - ammonia, bleach, disinfectants, oven & toilet cleaners, etc.
- Mercury containing products - thermometers, thermostats
- Paints- empty paint cans and dried up paint (solid) should be put in garbage
- Pesticides and garden chemicals
- Pool and spa supplies
- Propane tanks
- Paint thinners and solvents
- Road flares



Sharps (needles, syringes, lancets):

- From **personal use only**
- Seal in a puncture-resistant container (coffee can, liquid detergent jug, bleach bottle– preferred red color.)
- Label and bring to the HHW for **no cost disposal**.
- **Commercial sharps** may be disposed of by appointment only. Fees apply. Call 625.6580 to make an appointment.



IMPORTANT

- ▶ No mercury-containing lights may be knowingly placed in waste or recycling containers for disposal. To learn of other local collection locations, go to www.LightRecycleWA.org

Household Hazardous Waste

What **NOT** To Bring

Not accepted as HHW:

- ❌ Biological wastes
- ❌ Commercially generated hazardous waste
- ❌ Computers, monitors, televisions, DVD players, and e-readers. For locations, go to ecyclewashington.org or call **1.800.RECYCLE**
- ❌ Containers of HHW over 5 gallons
- ❌ Empty aerosol cans – remove spray tips and recycle
- ❌ Empty containers – treat as garbage or recycle
- ❌ Explosives – call **911**
- ❌ Garbage – haul to the transfer stations or Waste to Energy facility.
- ❌ Household ammunition
- ❌ Medications (see page 7)
- ❌ Radioactive waste
- ❌ Tires (*residential*) – treat as garbage. Large loads, call for appointment: **625.6580**.



Reuse Table

Paints, hobby chemicals and garden supplies often retain usefulness for years and can be reused. The HHW area has a **Reuse Table** where products are made available at no charge to Spokane County residents who sign a release.



Questions on where to dispose of items not listed here?
SpokaneWasteDirectory.org

Clean Green (Yard and Food Waste)

Rates Apply:

Clean Green includes:

- Leaves
- Weeds
- Brush
- Prunings
- Grass clippings
- Beauty bark
- Pine needles and pine cones
- Sod less than 3" thick
(shake out rocks & dirt)
- Woody materials up to 3" in diameter and 6' in length



Materials not allowed in Clean Green:

- ⊘ **NO** regular or compostable plastic bags
- ⊘ **NO** grease or liquids
- ⊘ **NO** plastic-coated or "shiny" containers or paper
- ⊘ **NO** pet waste, kitty litter or manure
- ⊘ **NO** dirt or rocks
- ⊘ **NO** dimensional wood, lumber, plywood, particle board or plastic/composite lumber

Food scraps and food-soiled paper are also Clean Green:

- Meat, fats, fish, poultry, bones, eggshells
- Leftovers and table scraps
- Non-liquid dairy products
- Vegetable and fruit trimmings, raw or cooked
- Non-shiny, food-soiled paper towels, napkins, plates and cups
- Paper coffee filters and tea bags
- Cardboard pizza boxes
- Paper pulp cartons from eggs and berries

Clean Green = Compost

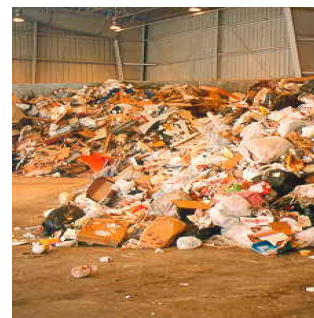


Questions on current disposal rates and method of payment?
Call 625.6580

Garbage

Rates Apply:

Questions on current disposal rates and method of payment?
Call 625.6580



Materials Not Accepted On Tipping Floor

- ⊘ **NO** Asbestos
- ⊘ **NO** Lead
- ⊘ **NO** Uncontained liquids
- ⊘ **NO** Explosives
- ⊘ **NO** Radioactive substances
- ⊘ **NO** Sharps & medical waste
- ⊘ **NO** Hazardous materials
- ⊘ **NO** Uncontained animal feces
- ⊘ **NO** Large animal carcasses over 15 lbs
- ⊘ **NO** Propane tanks—larger than 5 gallons
- ⊘ **NO** Commercial refrigeration units

- **Mixed loads** - Must be weighed separately or will be charged at the garbage disposal rate. (i.e., yard waste, recyclables or garbage in one vehicle)
- **Appliances** - refrigerators, freezers, washing machines and other "white goods" are charged the garbage disposal rate. Refrigerant is recovered, hazardous components removed and the metal recycled.
- **Tires** - up to four tires allowed in a load of garbage; over-sized tires must be cut into thirds.
- **Medications** -
Recommended disposal:
 1. Make medicine unusable (add wet coffee grounds to moisten pills; mix liquids with cat litter, dirt or cayenne pepper).
 2. Remove any identifying information from containers.
 3. Put in garbage

NEVER flush away medications in toilets or pour down drains. Medicines can contaminate water supplies, lakes, rivers and streams.

Facility Information

Days/Hours Open

Facility is open seven days a week,
7:30 a.m.-5 p.m., year-round.

Holidays

Facilities are **closed** for the following holidays:
New Year's Day, Memorial Day, Independence Day,
Labor Day, Thanksgiving Day & Christmas Day

Waste to Energy Disposal Facility & Recycling Center

2900 S. Geiger Blvd.

West of Spokane, across
from Washington
State Patrol

509.625.6580



Other facilities are also available to Spokane residents for disposal. Call 509.477.6800 or go to spokanecountysolidwaste.org for more information.



Information: 625.6580
spokanecity.org

June 2015
Printed on recycled paper
with partial funding from a
WA Dept. of Ecology Grant.