

City of Coeur d'Alene Stormwater Outfall Volume Reduction Plan



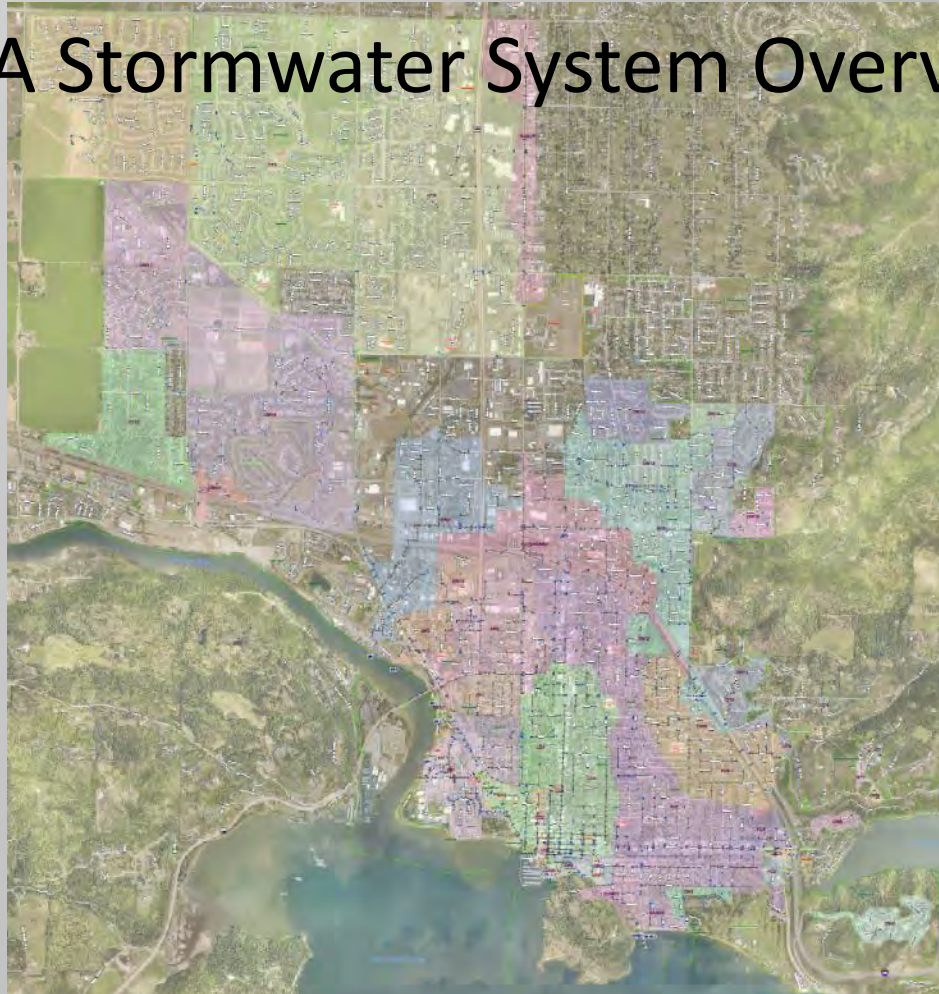
2023

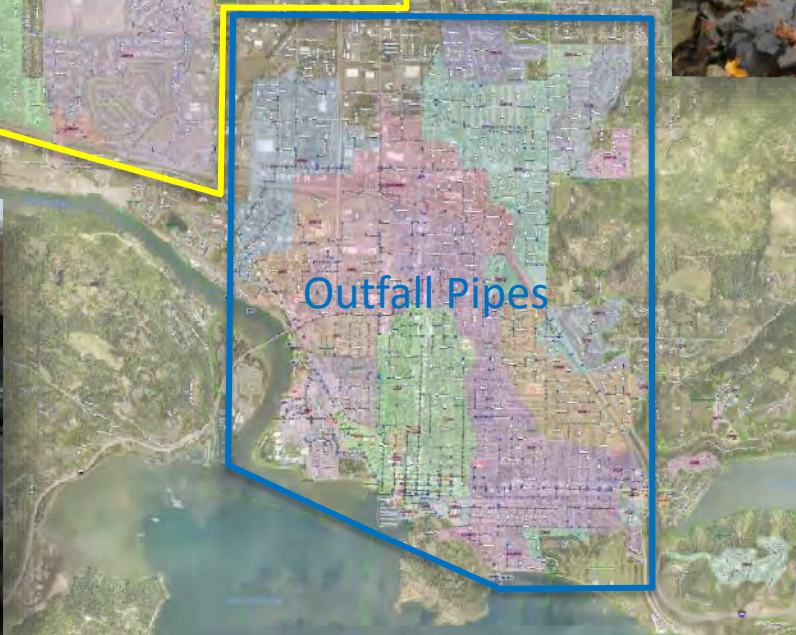
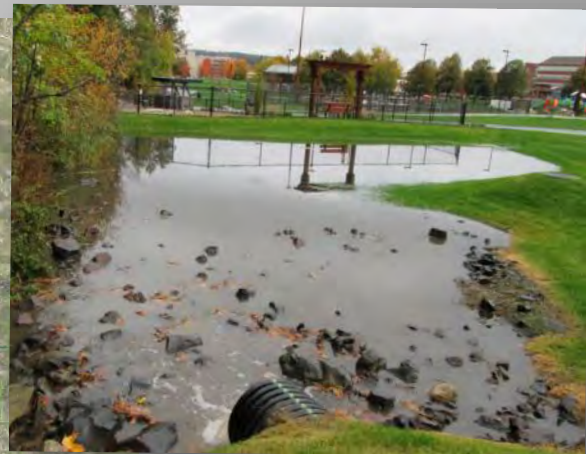
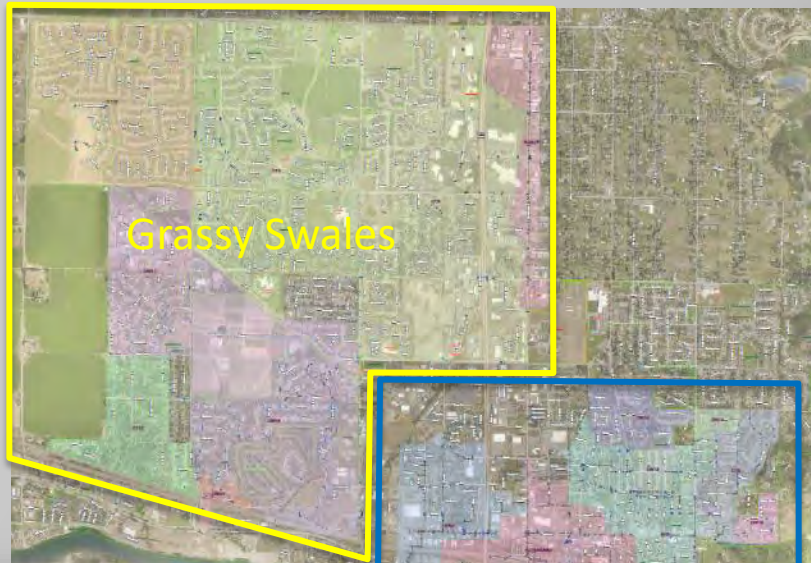
Common Stormwater Pollutants

- Oil and Grease
- Pesticides
- Fertilizers
- Metals
- Soaps
- Paint
- Bacteria
- Plastics and Trash
- Cigarette Butts
- Organic Matter
- Dog Feces

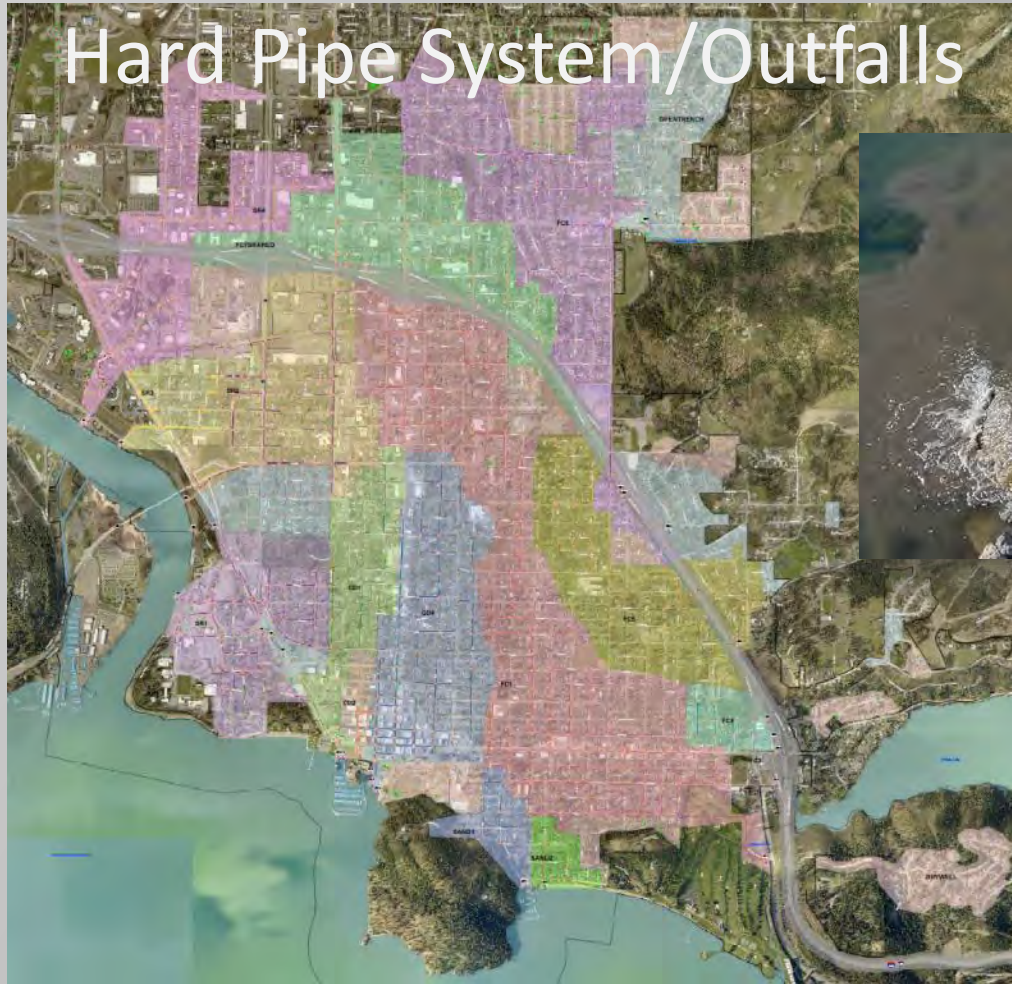


CDA Stormwater System Overview

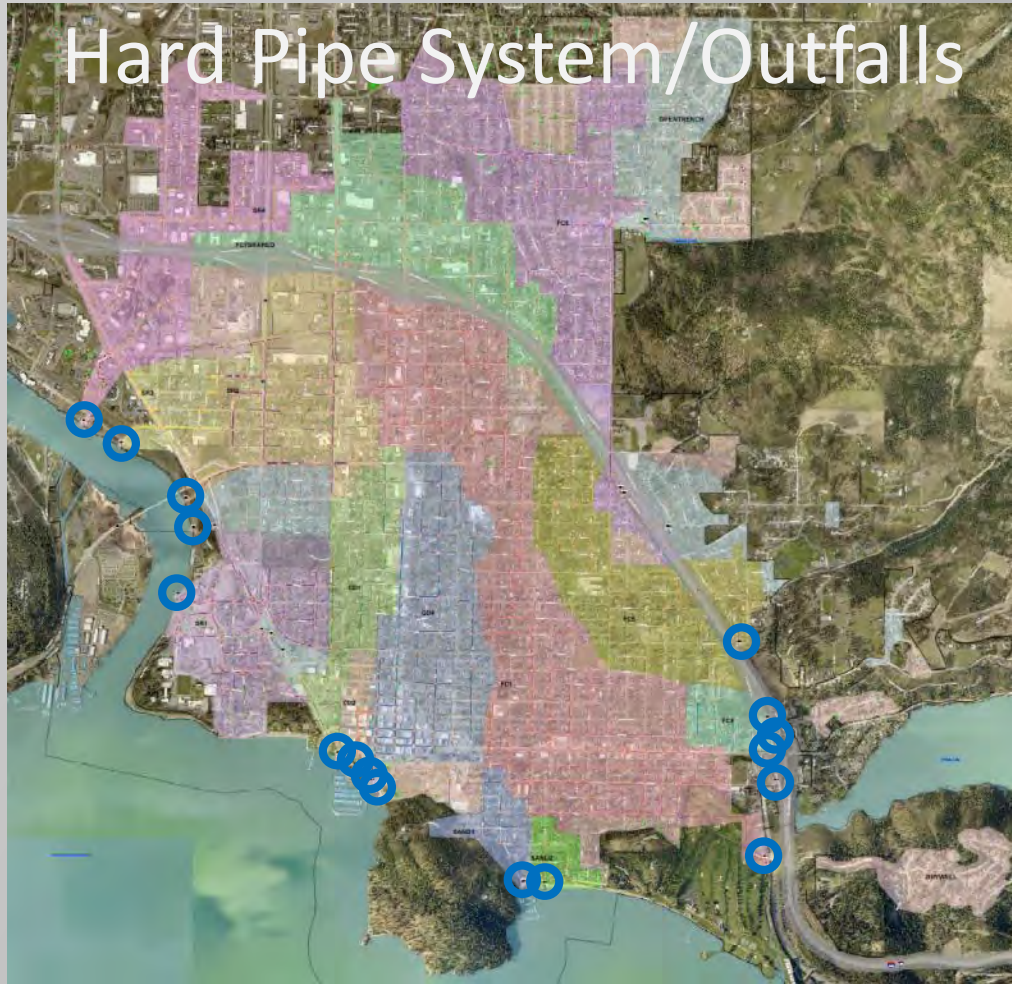




Hard Pipe System/Outfalls



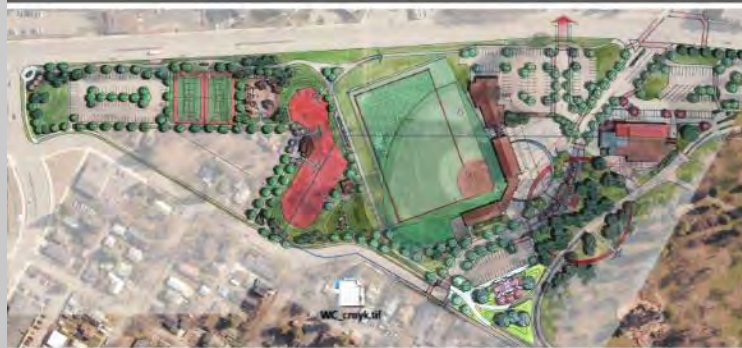
Hard Pipe System/Outfalls



Outdoor Classroom Swale



75 Acres, 2018



ignite cda

CITY OF COEUR D'ALENE
FOUR CORNERS/BLM CORRIDOR MASTER PLAN





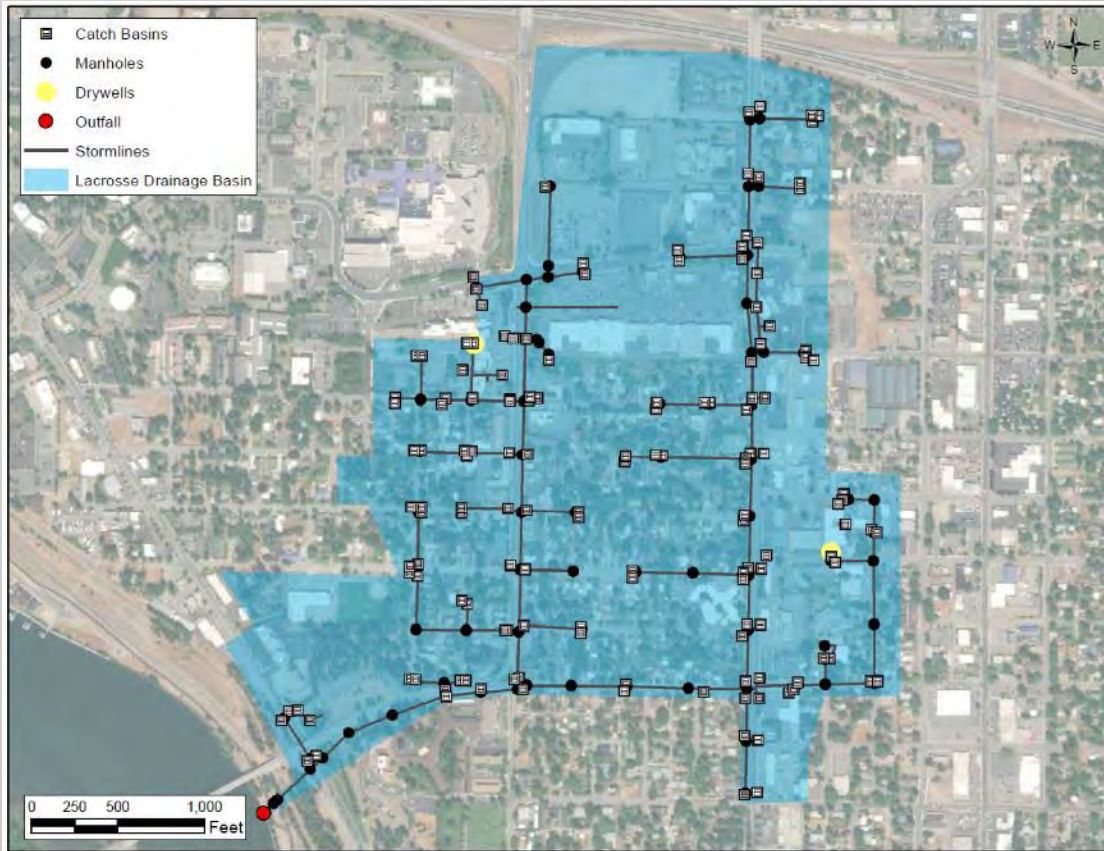


Railroad Bed

Pipe to Swale

Overflow

US-95/Northwest Boulevard Swale

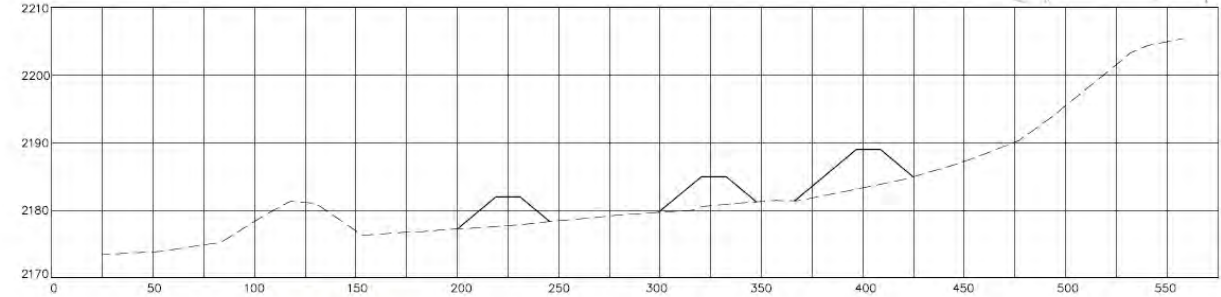
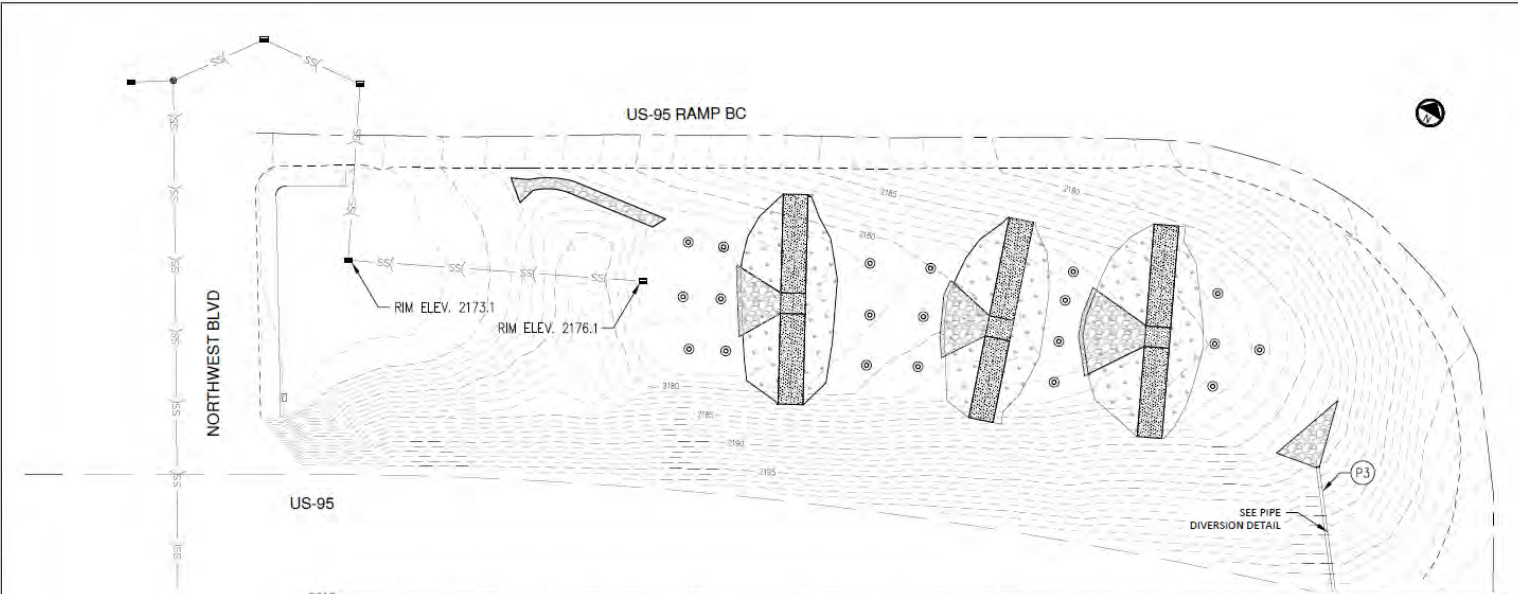


210 Acres, 2020









DESCRIPTION			
NO.	DATE	BY	DESCRIPTION

DETAILED:	BT	SCALE: SHOWN
DESIGNED:	JS	ARE FOR 11" x 17"
CHECKED:	JH	PRINTS ONLY
APPROVED:	JS	CADD FILE NAME
		DRAWING DATE
		JANUARY 2020

HMH engineering
 3882 N. Schreiber Way, Suite 104
 Coeur d'Alene, ID 83815
 (208) 635-5825

CDA LINCOLN-NW BLVD STORMWATER
 COEUR D'ALENE, IDAHO

COUNTY	KOOTENAI
SCALE	AS NOTED
SHEET	1 OF 2





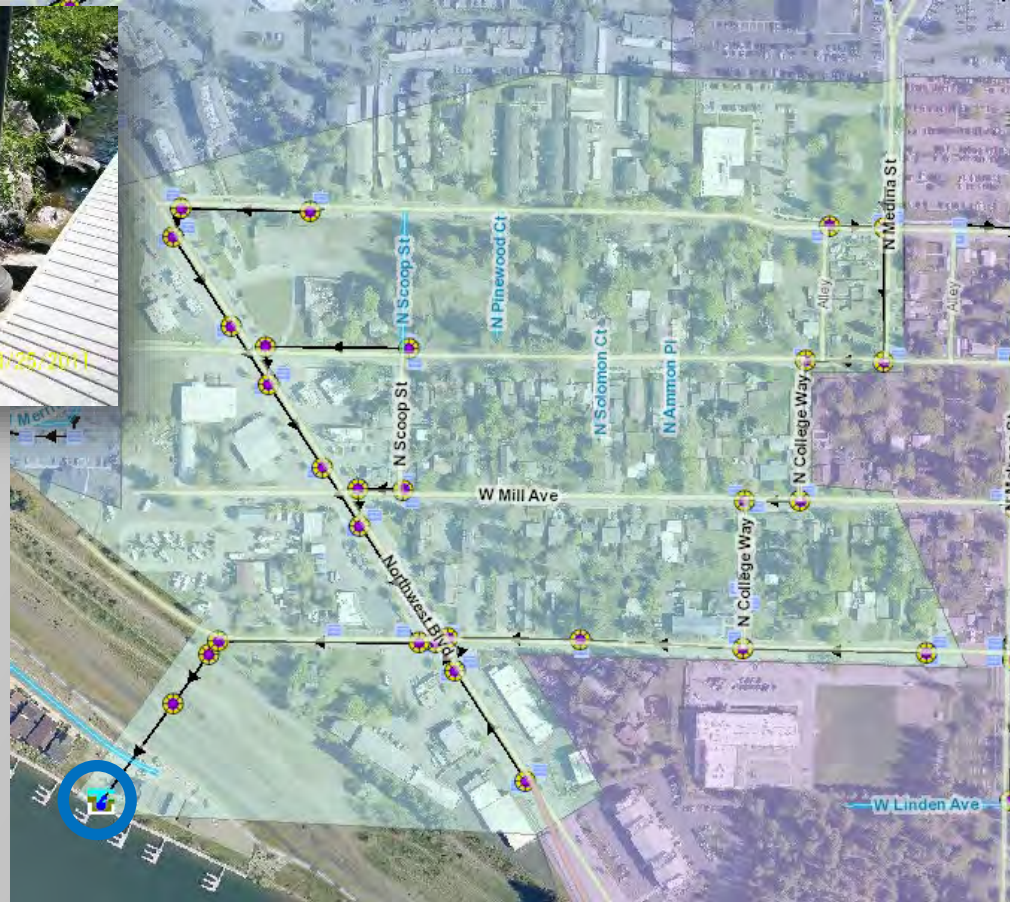


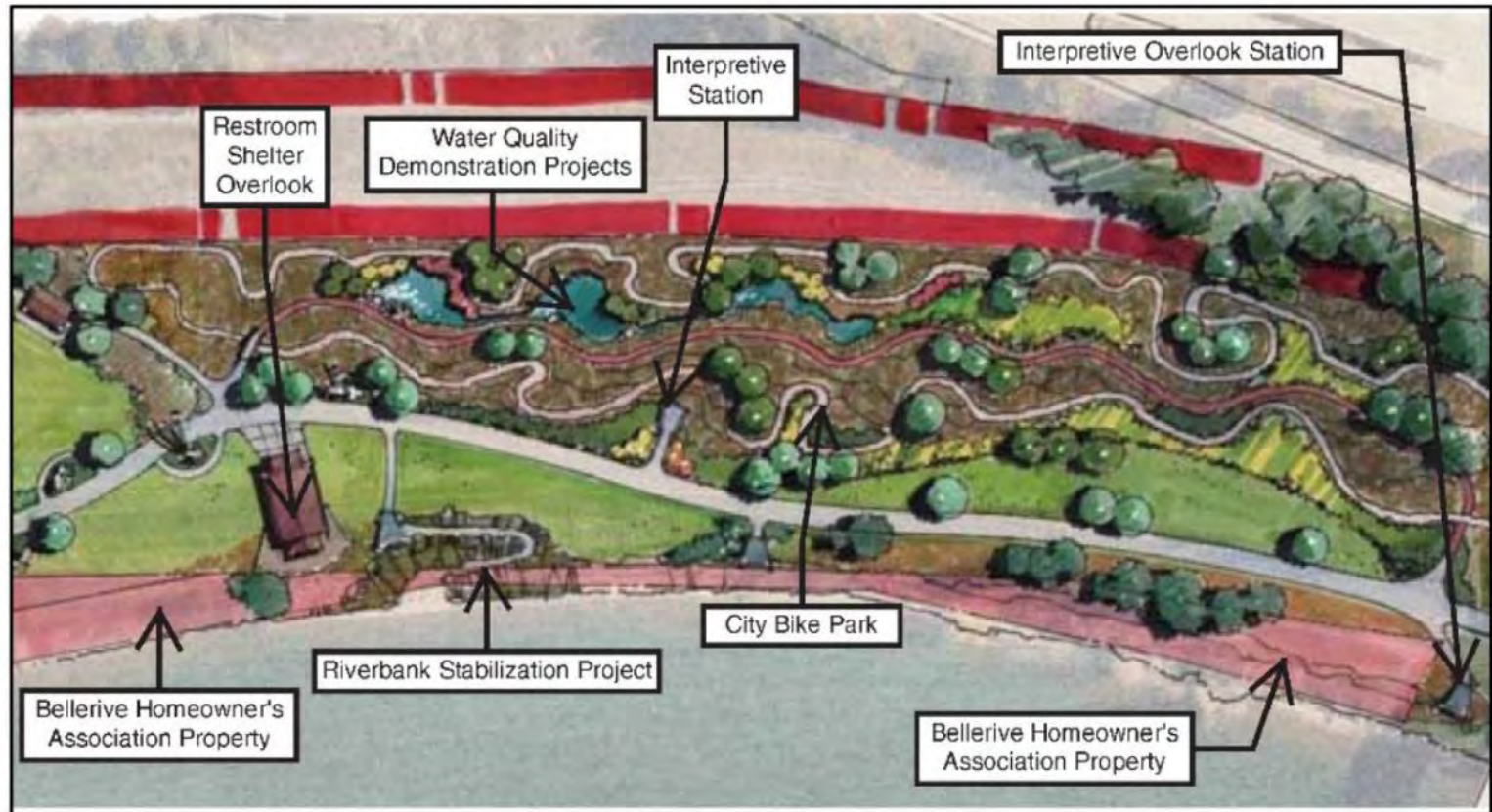




Lacrosse Ave Swale

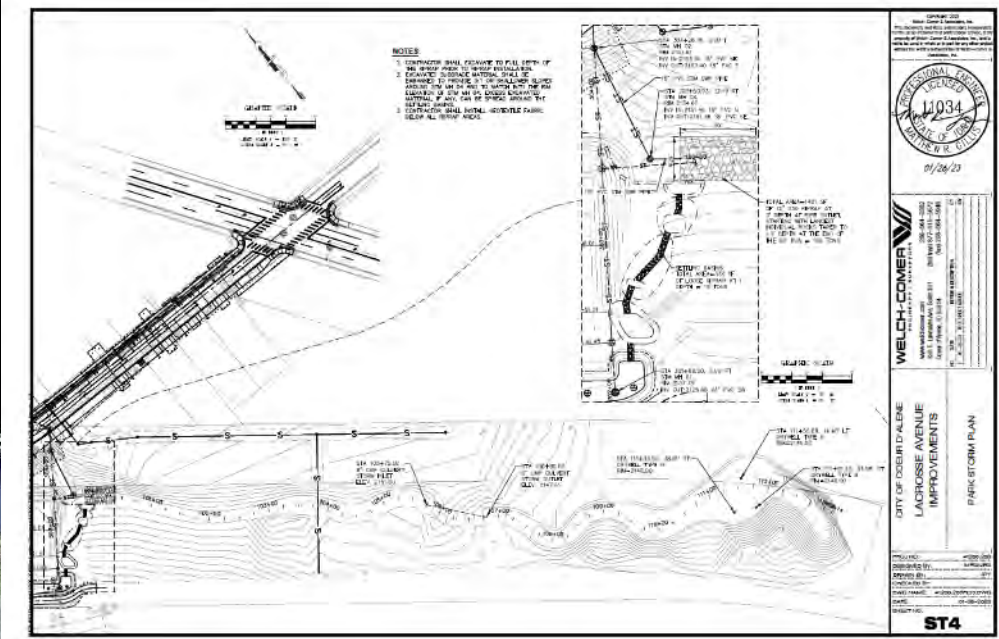
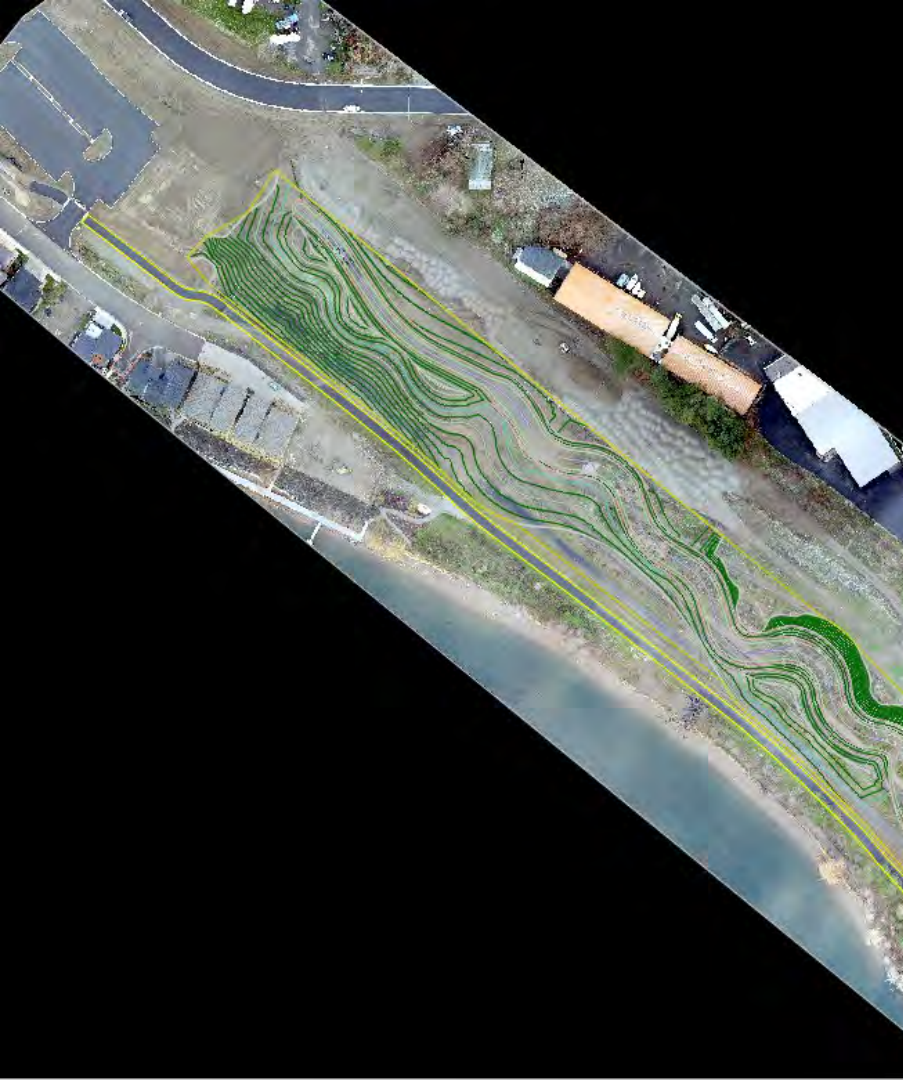
60 Acres, 2022





Conceptual Uses





WELCH-COMER ENGINEERS & ARCHITECTS

1034
ST. LOUIS, MISSOURI

01/26/23

**CITY OF OMAHA, ILLINOIS
LACROSSE AVENUE
IMPROVEMENTS**

PLAN: STORM PLAN

ST4







Leading Idaho Initiative

Coeur d'Alene Lake Phosphorus Reduction Projects

Project Ranking	Project Name	Applicant
1	City of Coeur d'Alene Stormwater Outfall Volume Reduction - Sanders Beach	City of Coeur d'Alene
2	City of Kellogg Sustainable Stormwater Improvements – Outfall to Bunker Creek	City of Kellogg
3	Coeur of d'Alene Stormwater Outfall Volume Reduction - Independence Point	City of Coeur d'Alene
4	City of Kellogg Sustainable Stormwater Improvements - North Kellogg Outfall	City of Kellogg
5	Northside Stormwater Drainage Improvements - Marmot Trail Road	East Side Highway District
6	Coeur d'Alene River Stabilization	Kootenai-Shoshone Soil and Water Conservation District (SWCD)
7	St. Joe River Reduction of Phosphate	Benewah SWCD
8	City of Coeur d'Alene Stormwater Outfall Volume Reduction - Mullan Ave	City of Coeur d'Alene
9	Mica Creek Watershed Agricultural Sediment Reduction and Improvement Project Phase 2	Kootenai-Shoshone SWCD
10	City of Kellogg Sustainable Stormwater Improvements - Hill Street Outfall	City of Kellogg
11	City of Plummer and Stimson Lumber Company Municipal Wastewater Reuse Project	City of Plummer

Sanders Beach/11th Street Marina Outfall

76 Acres, 2023





NOT APPROVED FOR CONSTRUCTION

AGENCY REVIEW

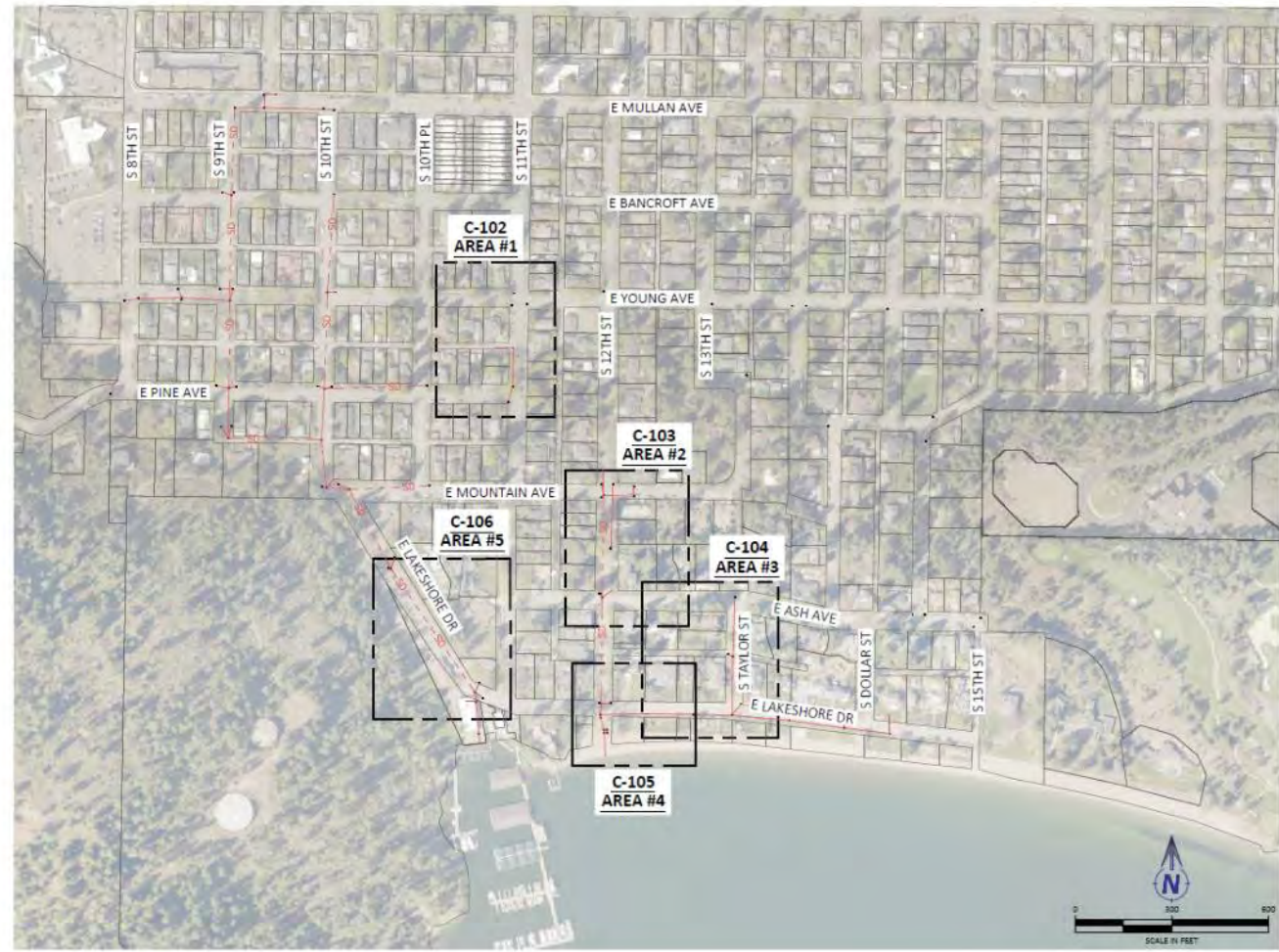
3"
SCALE (SEEKEY ONLY)

DWG: m21014 c-101 plan.dwg
PROJECT NO: M21014
DRAWN BY: B.SOUVENIR
CHECKED BY: J.SHAH
DATE: 2023/02/07

REVISIONS			
NO.	DATE	BY	DESCRIPTION

AREA LOCATION MAP

DRAWING: C-101
SHEET: 04 OF 15



PROJECT: 11TH STREET STORMWATER PROJECT
 SHEET: 04 OF 15
 DATE: 2023/02/07
 DRAWN BY: B.SOUVENIR
 CHECKED BY: J.SHAH
 PROJECT LOCATION: 11TH STREET STORMWATER PROJECT, COEUR D'ALENE, ID

Mullan Ave Outfall

12 Acres, 2023





Independence Point Outfall

131 Acres, 2023



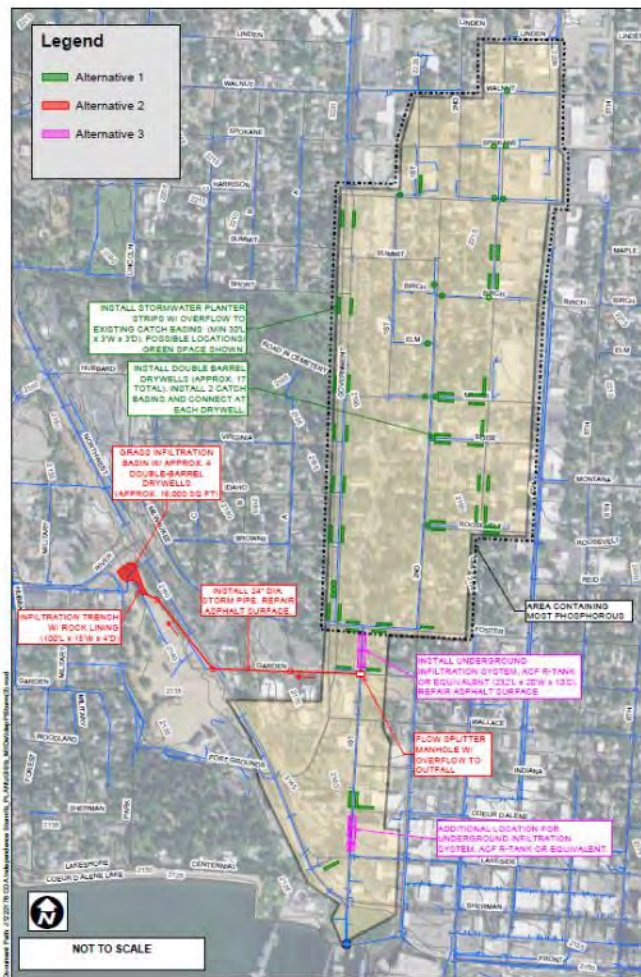


Figure 3
Coeur d'Alene

Alternatives
Independence Point Basin



East Sherman Ave Outfall

12 Acres, 2024



