



Lake Spokane Fishery Enhancement and Creel Survey

Spokane River Forum

April 26, 2023

Chris Moan, Fisheries Habitat Biologist

Purpose

- Enhance recreational fishing opportunities in Lake Spokane
 - Stock 155,000 sterile rainbow trout annually for 10 years starting in 2014
 - Put and take fishery
- Creel surveys in 2011, 2016, 2018, 2020, 2022



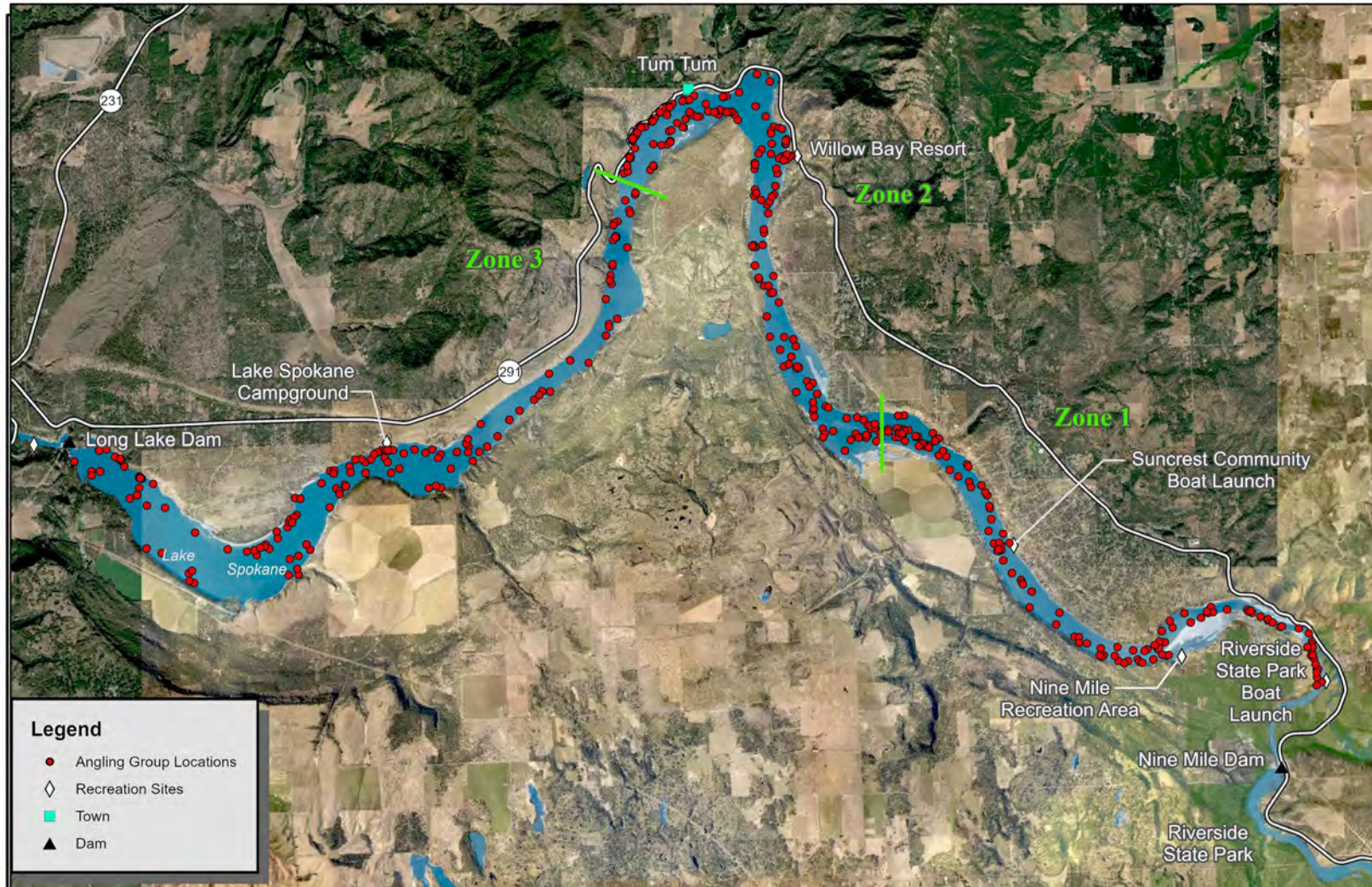
Methods

- Survey March - November
- Angler surveys and angler counts



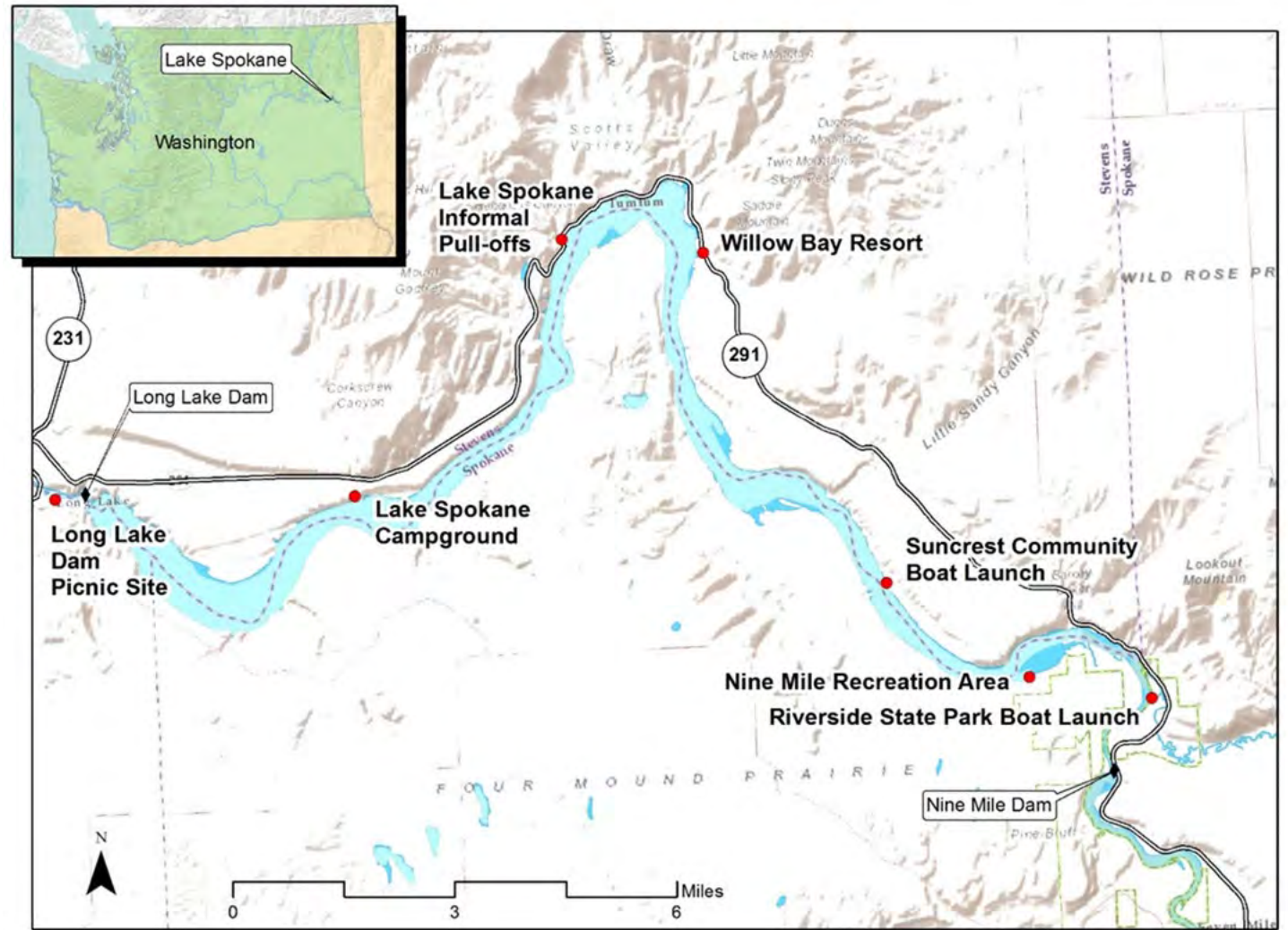
Angler Counts

- Angler effort



Angler Surveys

- 7 locations
- Angler catch and harvest rates
- Total catch and harvest rates



Target Species

Species	% of 2022 Anglers	% of 2020 Anglers	% of 2018 Anglers	% of 2016 Anglers	% of 2011 Anglers
Rainbow Trout	36%	33%	30%	27%	--
Bass	36%	34%	45%	40%	82%
Any Species	19%	24%	19%	34%	16%
Other Species	20%	18%	18%	9%	--
Yellow Perch	3%	4%	10%	8%	--
Crappie	2%	2%	3%	6%	--
Northern Pikeminnow	<1%	<1%	<1%	1%	--
Carp	1%	<1%	--	1%	2%

Target Species

Species	% of 2022 Anglers	% of 2020 Anglers	% of 2018 Anglers	% of 2016 Anglers	% of 2011 Anglers
Rainbow Trout	36%	33%	30%	27%	--
Bass	36%	34%	45%	40%	82%
Any Species	19%	24%	19%	34%	16%
Other Species	20%	18%	18%	9%	--
Yellow Perch	3%	4%	10%	8%	--
Crappie	2%	2%	3%	6%	--
Northern Pikeminnow	<1%	<1%	<1%	1%	--
Carp	1%	<1%	--	1%	2%

Size of Trout Harvested

Total Length Measured to Nearest Inch of Rainbow Trout Harvested	% of Harvested Rainbow Trout			
	2022	2020	2018	2016
Up to 10"	7%	15%	4%	16%
11"	1%	2%	3%	7%
12"	3%	17%	5%	15%
13"	1%	5%	20%	9%
14"	8%	13%	26%	11%
15"	8%	7%	12%	20%
16"	9%	16%	16%	20%
17"	29%	5%	5%	2%
18"	27%	10%	10%	4%
19"+	6%	0%	0%	0%

Size of Trout Harvested

Total Length Measured to Nearest Inch of Rainbow Trout Harvested	% of Harvested Rainbow Trout			
	2022	2020	2018	2016
Up to 10"	7%	15%	4%	16%
11"	1%	2%	3%	7%
12"	3%	17%	5%	15%
13"	1%	5%	20%	9%
14"	8%	13%	26%	11%
15"	8%	7%	12%	20%
16"	9%	16%	16%	20%
17"	29%	5%	5%	2%
18"	27%	10%	10%	4%
19"+	6%	0%	0%	0%

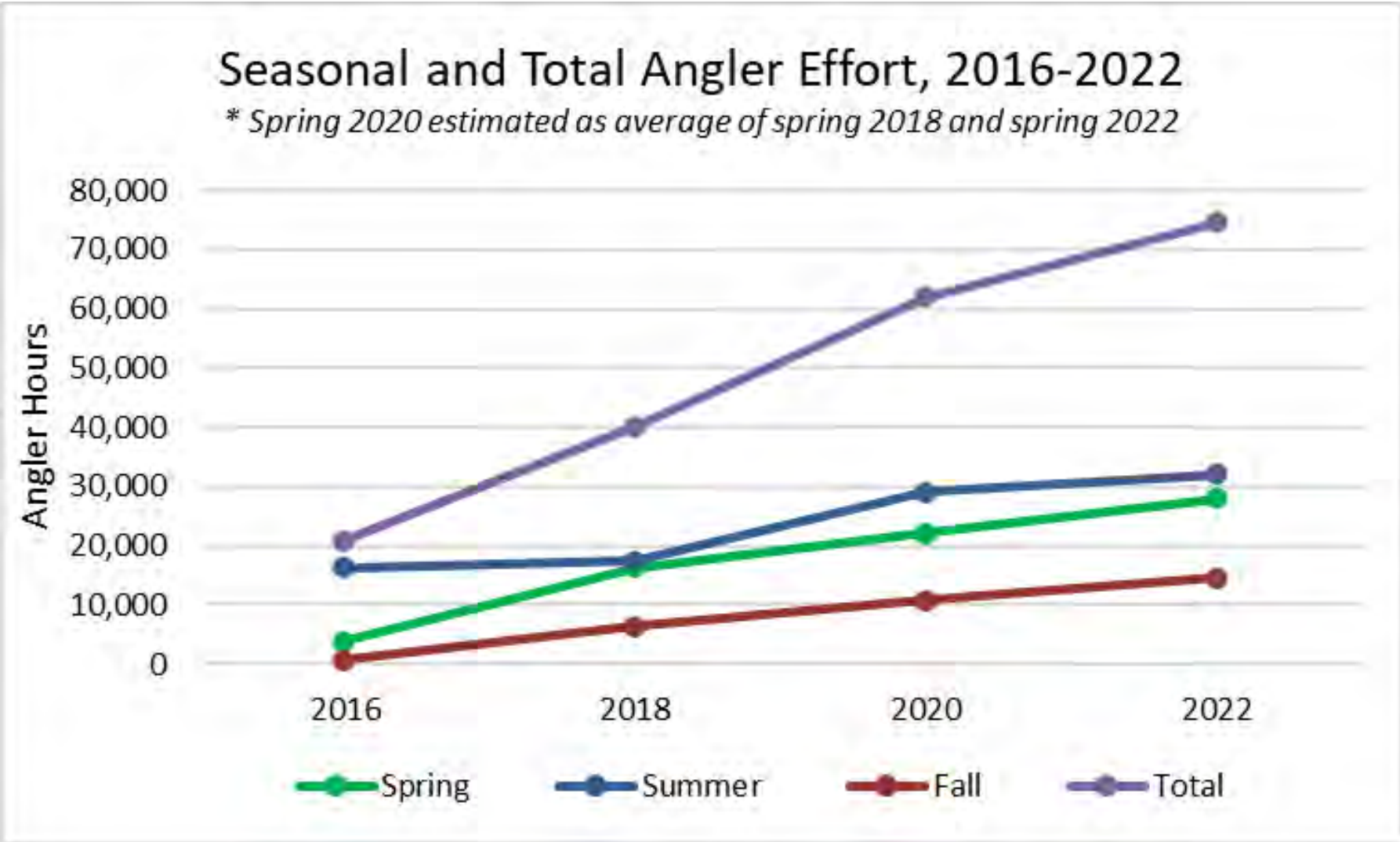
Satisfaction and Likelihood to Return

	1 Very Satisfied	2 Satisfied	3 Neutral	4 Dissatisfied	5 Very Dissatisfied
Percent of 2022 Surveys	27%	61%	7%	5%	<1%
Mean 2022 Response	1.9				
Percent of 2020 Surveys	14%	62%	12%	8%	5%
Mean 2020 Response	2.3				
Percent of 2018 Surveys	31%	49%	11%	8%	1%
Mean 2018 Response	2.0				
Percent of 2016 Surveys	34%	38%	20%	6%	2%
Mean 2016 Response	2.0				
Percent of 2011 Surveys	21%	48%			
		% of 2022 Anglers Targeting Trout	% of 2020 Anglers Targeting Trout	% of 2018 Anglers Targeting Trout	% of 2016 Anglers Targeting Trout
Likely to Return to Fish for Trout		84%	80%	96%	78%
Not Likely to Return to Fish for Trout		16%	20%	4%	22%

Number of Groups and Anglers Encountered

Group Size	Total # Group Members (Individuals)				Total # Anglers (Individuals)			
	2022	2020	2018	2016	2022	2020	2018	2016
1	154	142	135	108	154	142	135	108
2	492	500	482	316	467	455	439	256
3	237	213	162	153	225	194	147	124
4	88	80	68	64	84	73	62	52
5	20	50	25	20	19	46	23	16
6	6	--	12	6	6	--	11	5
7	0	--	14	--	0	--	13	--
Total	997	985	898	667	955	909	830	561

Angler Effort



Catch and Harvest Rates

Rainbow Trout Catch and Harvest Rates, All Anglers, June–Nov

Mode	Catch Rate per Angler-Hour		Harvest Rate per Angler-Hour		Days in Period 2020 and 2022	Total Estimated Rainbow Trout Catch		Total Estimated Rainbow Trout Harvest	
	2022	2020	2022	2020		2022	2020	2022	2020
Boat	0.11	0.06	0.02	0.03	187	494	269	90	135
Shore	0.02	0.07	0.02	0.05	187	224	314	90	224
TOTAL						718	583	180	359

Mode	Catch Rate per Angler-Hour		Harvest Rate per Angler-Hour		Days in Period 2016 and 2018	Total Estimated Rainbow Trout Catch		Total Estimated Rainbow Trout Harvest	
	2018	2016	2018	2016		2018	2016	2018	2016
Boat	0.20	0.14	0.07	0.10	187	898	628	314	449
Shore	0.28	0.01	0.28	0.01	187	1,257	45	1,257	45
TOTAL						2,155	673	1,571	494

Catch and Harvest Rates

Rainbow Trout Catch and Harvest Rates, All Anglers, June–Nov

Mode	Catch Rate per Angler-Hour		Harvest Rate per Angler-Hour		Days in Period 2020 and 2022	Total Estimated Rainbow Trout Catch		Total Estimated Rainbow Trout Harvest	
	2022	2020	2022	2020		2022	2020	2022	2020
	Boat	0.11	0.06	0.02		0.03	187	494	269
Shore	0.02	0.07	0.02	0.05	187	224	314	90	224
TOTAL						718	583	180	359

Mode	Catch Rate per Angler-Hour		Harvest Rate per Angler-Hour		Days in Period 2016 and 2018	Total Estimated Rainbow Trout Catch		Total Estimated Rainbow Trout Harvest	
	2018	2016	2018	2016		2018	2016	2018	2016
	Boat	0.20	0.14	0.07		0.10	187	898	628
Shore	0.28	0.01	0.28	0.01	187	1,257	45	1,257	45
TOTAL						2,155	673	1,571	494

Conclusions

- More anglers targeting rainbow trout
- Bigger fish being caught
- More anglers are satisfied with their fishing experience and most would likely return
- The number of anglers and angler effort has increased
- Catch and harvest rates are low
- Stocking in 2023

Questions?

