

Spokane River Forum

Habitat Restoration and Land Protection

Michael Crabtree
Conservation Director

Inland NW Land
Conservancy



We conserve, care for, and connect with lands and waters essential to life in the Inland Northwest.



Our Core Values

Love of Nature

Our work is driven by a deep love of the natural world and its processes.

Perpetuity

We steward lands and resources so that our work outlives us.

Discernment

We make strategic choices based in science to maximize our enduring conservation impact.

Collaboration

We build relationships that deliver results.





We Conserve Land

We Care for Land





We Connect People to Land



Regional Land Protection

118 Protected Properties

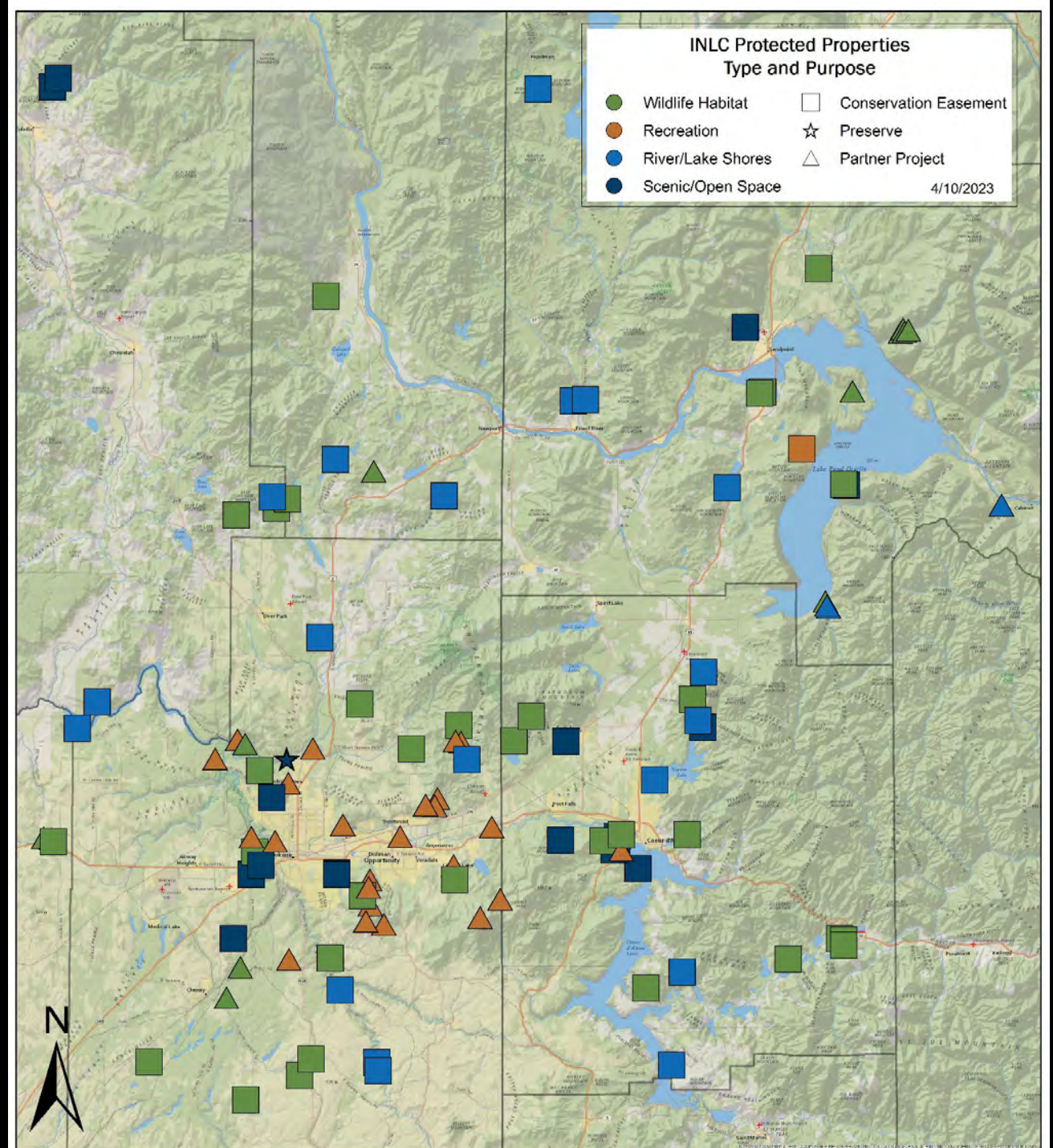
- 69 easements
- 48 partner projects
- 1 preserve property

23,005 acres:

>1,300 ac. of wetlands

>25 miles of protected shoreline

~100 miles of protected streambank





METHODS FOR PERMANENT CONSERVATION

- Conservation Easements
 - Donated
 - Purchased
- Land acquisition
- Bridge ownership

- 
- TIME
 - Partnerships & Collaboration
 - Community support
 - Patience
 - Creativity
 - Legal expertise
 - Money
 - TIME

How can we have a greater impact on our region?

Land Protection + Restoration



- Ensures that restoration efforts endure
- Eligible for programs that require permanent protection.
- Makes grant applications more competitive.
- Builds partners relationships
- We consider partner engagement in project evaluation

Schlepp Conservation Easement

CDA River Restoration Partnership



Naccarato Conservation Easement

RCO Funding



WAIKIKI SPRINGS NATURE PRESERVE 2020

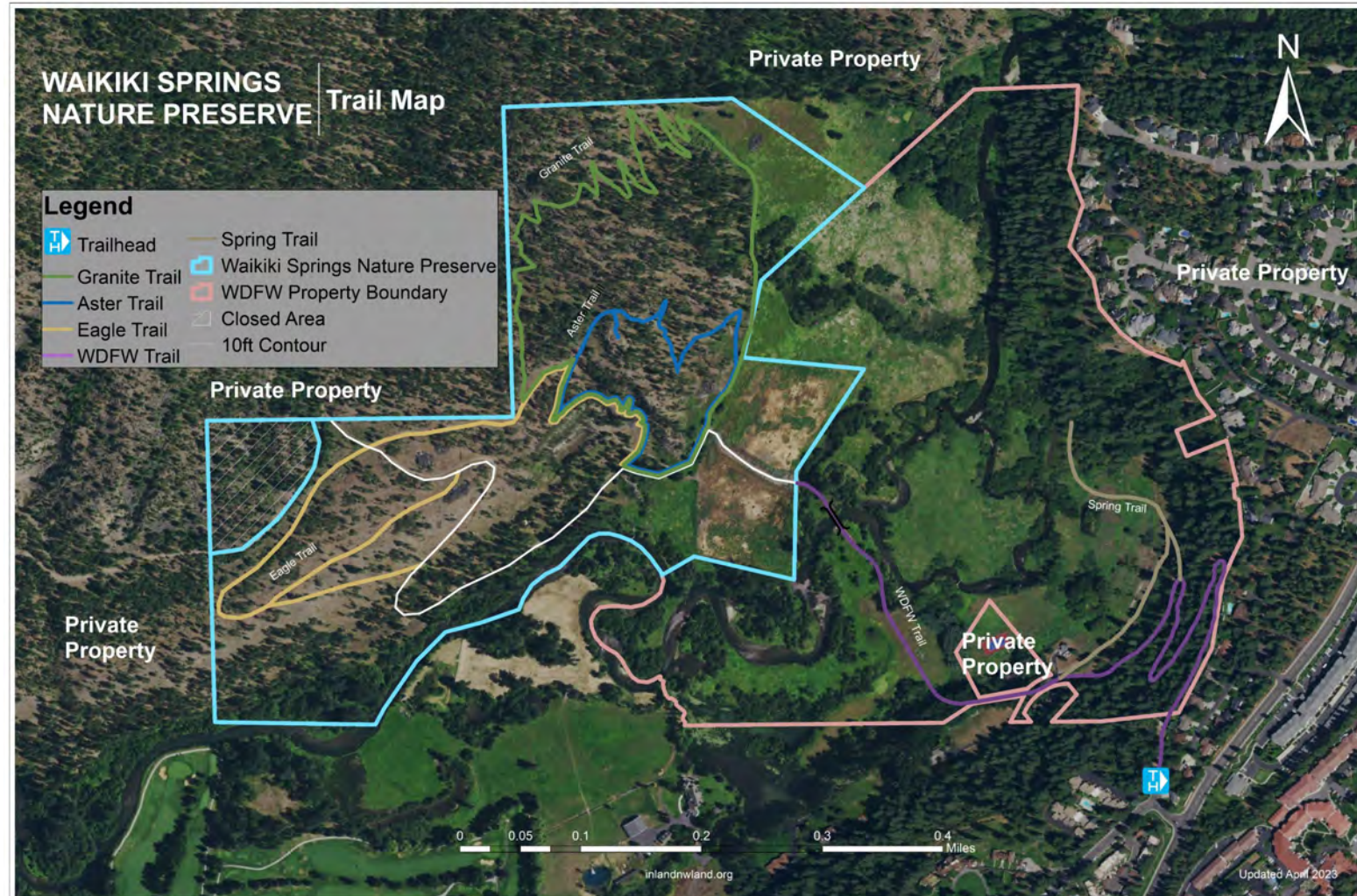
Reconnecting with roots:
Salmon in the Little Spokane River

95 acres adjacent to WDFW
land

Network of social trails and
widespread trespassing

Ideal anadromous fish
ecology

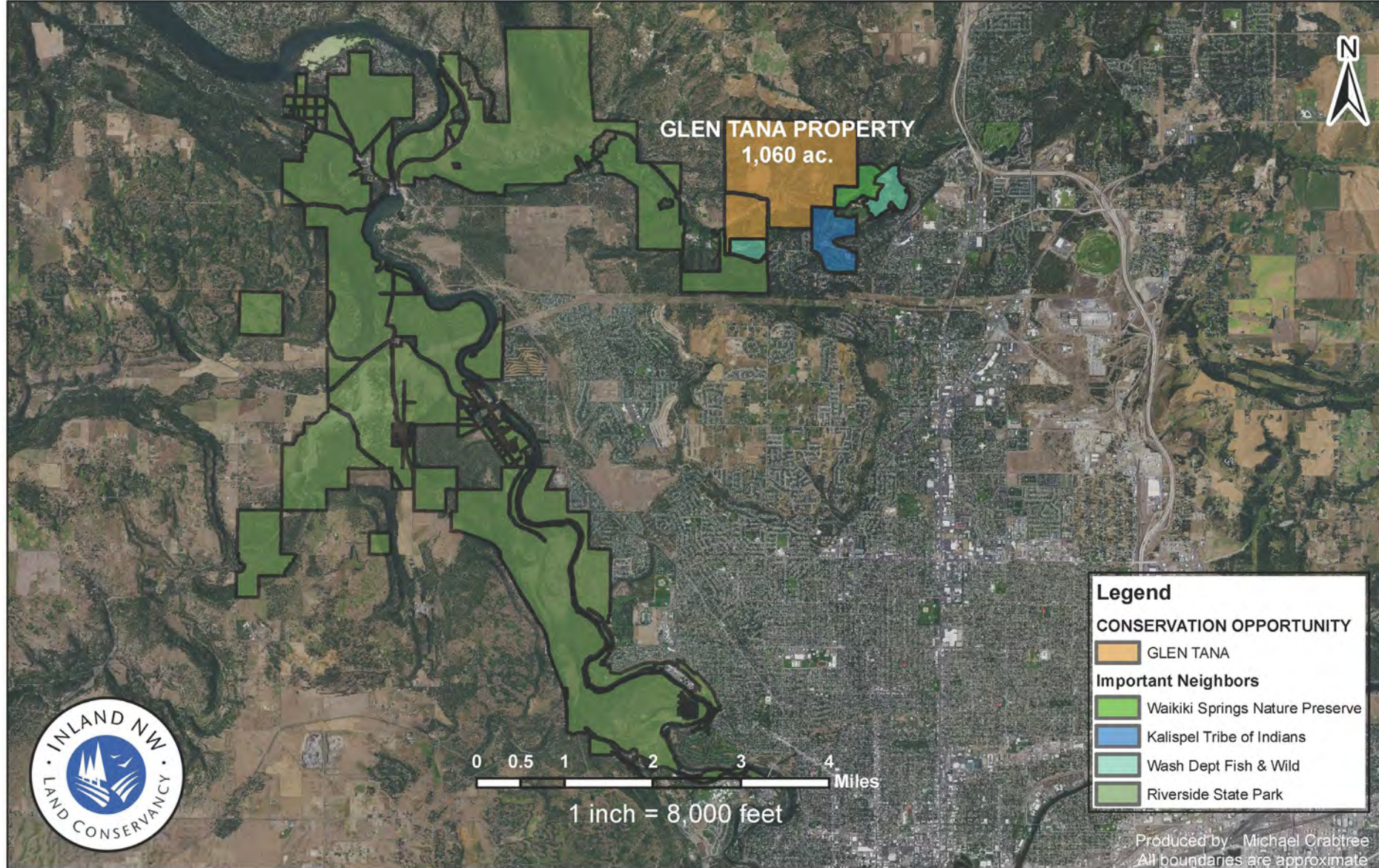
Development-minded private
landowner





**Salmon Release in 2021 at
Waikiki Springs by the Spokane
Tribe of Indians**

Glen Tana - The Missing Link



JOIN THE LEGACY OF LOCAL CONSERVATION!

- Donate
- Volunteer
- Subscribe to Conservancy updates
- Find local trail maps
- See where we work
- Learn about planned giving
- Much more!

