



Upper Columbia United Tribes

**Columbia River Toxics Reduction Lead Entity
(CRTRLE) Project**

Caroline Keever - Project Manager

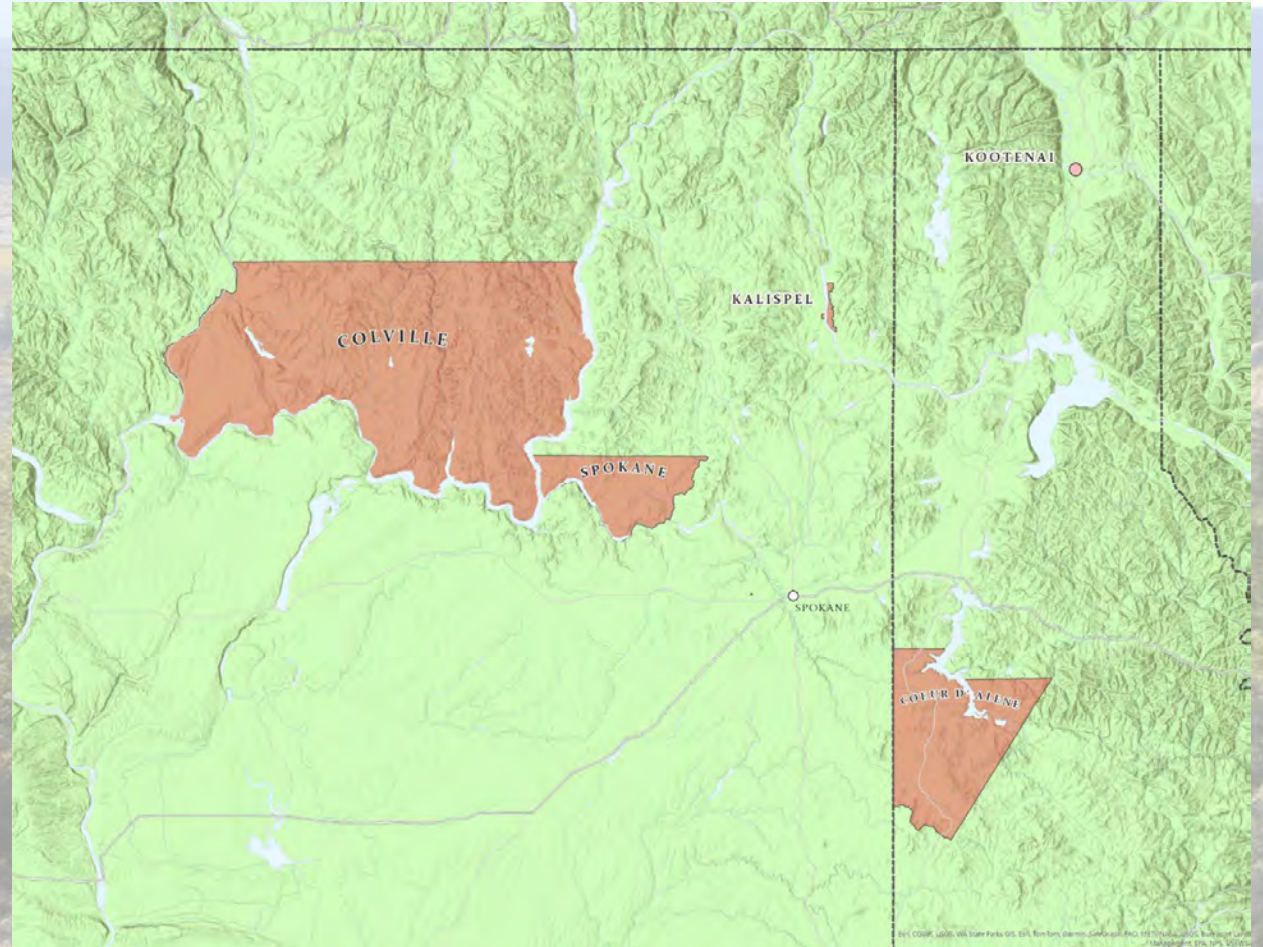
Jerry White - Project Coordinator

Who Are Upper Columbia Plateau Tribes: Members of UCUT?



The Upper Columbia United (member) Tribes of (UCUT) - Five Sovereigns:

- Confederated Tribes of the Colville Reservation (12)
- The Coeur d'Alene Tribe
- The Kalispel Tribe
- The Kootenai Tribe of Idaho
- The Spokane Tribe



Upper Columbia Plateau Tribes - River Connections - River Traditions



Upper Columbia Plateau Tribes - River Connections Traditions

- Sovereign Tribes and diverse indigenous cultures in diverse landscapes of the upper Columbia Plateau.

Common Connections:

- Intimate connections to the Columbia Basin Watershed rivers
- First Foods
- Anadromous and resident fish
- Plants, aquatic, and terrestrial animals
- Values-based leadership



What is UCUT?



The Upper Columbia United Tribes (UCUT) is a tribal consortium, comprised of the five Upper Columbia Plateau Tribes



[About](#) ▾ [Member Tribes](#) ▾ [Projects](#) ▾ [Contact](#) ▾ [Salmon Reintroduction](#) ▾ [Search](#) 🔍

Five tribes, one vision for the future

UNITED FOR THE BENEFIT OF ALL

The Upper Columbia United Tribes ensure a healthy future for the benefit of all by protecting and enhancing the traditional territorial lands of our ancestors. Through the collaboration of five area tribes, we take a proactive, collaborative, and science-based approach to promoting fish, water, wildlife, diverse habitat, and Indian culture in the Northwest.

Image: Columbia River

Credit: Confederated Tribes of the Colville Reservation

Sovereign Tribes and Indigenous Cultures



- Toxic pollution destroys intimate connections, healthy lifeways, and traditional-use relationships
- Put Tribal communities and Landscape relationships at risk
- Further, toxic pollution puts all communities at risk

Fish Advisory

Upper Columbia River/Lake Roosevelt

Fish are nutritious, but certain fish in the Upper Columbia River contain chemicals (mercury and PCBs) that can harm your health. **Babies and children are most at-risk. Women who are or might become pregnant, nursing mothers, and children should follow all of this advisory.** Everyone else should follow the largescale sucker advice, and also limit the amount they eat of other fish to no more than 3 times the amount recommended.

HEALTHY CHOICE		Meals per Week
Kokanee		3 meals per week
Lake Whitefish		2 meals per week
Rainbow Trout		
Canned (Light) Tuna added for comparison		For more healthy store-bought choices: www.doh.wa.gov/fish
Limit		Meals per Month
Burbot		Eat only 4 meals per month of any combination of these 5 fish.
Longnose Sucker		
Mountain Whitefish		
Smallmouth Bass		
Walleye		
Caution		Meals per Month
Largescale Sucker		Women of childbearing age and children: 2 meals per month Everybody else: 1 meal per week
Largemouth Bass		2 meals per month
DO NOT EAT		DO NOT EAT
Northern Pike/Minnow		

To reduce your risk, consider all the places you get fish from such as rivers, lakes, and grocery stores.
Example: If you eat 2 kokanee meals, it's safe to eat 1 serving of canned light tuna; no other fish should be eaten that week.

Preparing Fish the Healthy Way
Fish are part of a healthy diet. You can make it even healthier if you follow these tips. Some chemicals build up in the fat of fish and can be reduced if you prepare and cook fish correctly. Mercury cannot be reduced because it builds up in fish muscle (the fillet).

- Before cooking fish remove the skin, fat, and internal organs.
- Eat younger and smaller fish (within legal limits).

Serving Size

Adult: 160 lb. = 8 oz. uncooked fish

Child: 80 lb. = 4 oz. uncooked fish

Contact Information
Department of Health
Toll Free: 1-877-485-7316
www.doh.wa.gov/fish

Health

DCH 334-303 May 2015. Fish Illustrations © Joseph H. Tomellen. Available in other formats for people with disabilities: 1-800-525-0127 (TDD/TTY call 711).





Columbia River Toxics Reduction Lead Entity (CRTRLE) Project

CRTRLE is a coordinated UCUT effort engaging the five member Plateau Tribes to reduce toxic pollution from entering the waterways and ecosystems of the Upper Columbia Basin Watershed. The effort endeavors to recover the ability for tribal communities to connect to traditional foods, recreation, fisheries, plants and animals of the aboriginally occupied landscapes.

The CRTRLE is working for the benefit of tribal residents and *all residents* and communities living in the upper Columbia River Watershed.

Each Tribe has done extensive science and toxics reduction work individually - UCUT will endeavor to coordinate and build on further efforts.

The Columbia River Toxics Reduction Lead Entity (CRTRLE) Project

The What:

\$5,597,772 - Total funding package

- Developing, implementing, and managing a multi-phase, large-scale program which leverages partnerships and includes a comprehensive toxics reduction strategic plan.
- Leading program and policy development and providing technical assistance.
- Awarding and managing subawards.
- Participating in the Columbia River Basin Restoration Program Working Group

The Columbia River Toxics Reduction Lead Entity (CRTRLE) Project

How:

The project is comprised of the following components, activities, and “flow”:

The Columbia River Toxics reduction Lead Entity is composed of five major project and focus areas or “project bins”.

In each of the five project “project bins” there are multiple subawards available for each of the five member tribes of UCUT and other entities.

- **Toxics Reduction Strategic Plan (\$960,000 - 8 subawards, \$120,000 each)** This is a long-term project that seeks to provide a framework for integrating all parties into a cohesive plan that creates an overall framework to organize efforts in preventing and removing persistent, bioaccumulative toxics (PBTs) and Chemicals of Concern (CoC) from Columbia Basin waterways.
- **Lead Trade-Out (\$259,000 - 7 subawards, \$37,000 each)** This program would endeavor to prevent new lead (in the form of fishing gear) from entering and polluting waterways.
- **Creation of a regional inventory of historic mines (\$270,000 - 6 subawards, \$45,000 each)** The inventory will be a synthesis of information on historic mine locations, tailing storage areas, and legacy mining contamination pathways, along with the identification of priority sites for remediation.
- **Education and Outreach (\$525,000 - 7 subawards, \$75,000 each)** Community education is a direct way of educating people in preventing people and wildlife from being poisoned, and preventing toxics from entering the ecosystems and waterways.
- **Agricultural buffers and Best Management Practices (BMPs) (\$1,200,000 - 12 subawards, \$100,00 each)** This project would endeavor to encourage the recovery of stream-side, riparian habitats to prevent toxic pollution from running off the surrounding landscape and entering our waterways.

CRTLLE Updates

Current Work:

- Drafting the RFP
- Seeking community, Nonprofit, Agency, and Tribal Engagement

Timeline:

- The RFP will open to the public in the beginning of July
- The RFP will close mid to late August
- Awards will be granted in September



Upper Columbia United Tribes

Columbia River Toxics Reduction Lead Entity (CRRLE) Project

Caroline Keever - Project Manager
Email: caroline@ucut-nsn.org
Phone: (509) 564-5475

Jerry White, Jr. - Project Coordinator
Email: jerry@ucut-nsn.org
Phone: (509) 475-1228