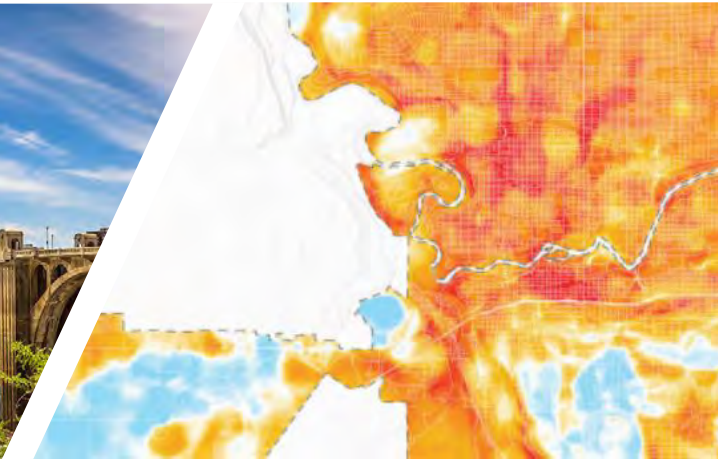




Climate Planning

EXPO H2O— May 30, 2024

Tirrell Black, AICP, City of Spokane Planning



Growth Management Planning



- Washington State has a **planning framework** – RCW 36.70A, **Growth Management Act (GMA)**
 - **Comprehensive Plan** is the **policy** document.
 - Elements of the Comprehensive Plan: **Land Use, Transportation, Capital Facilities & Utilities** + more
- **Land use** decisions have **long-term** effects
- **Infrastructure** has **long lead times** and **long payback** periods

Funded Climate Planning HB1181: Climate Law (2023)



- Adds **Climate & Resiliency Goal** to **Growth Management Act**
- Engage **groups historically under-represented** in planning, including Tribes

FUNDED BY WASHINGTON'S
CLIMATE 
COMMITMENT
ACT 

WA Comprehensive Planning – every 10 years

RCW 36.70A

What is Periodically Reviewed

- Comprehensive Plan 20-year
- Development Regulations

New Review Mandates

- Climate Planning
- Housing Targets
- Development Regulations follow Comprehensive Plan Update
 - Critical Areas Ordinance (2027)



2024 Due December 31st 2025 Due June 30th 2026 Due June 30th 2027 Due June 30th

★ Starred counties are partially planning under the Growth Management Act

Climate Element Requirements

Eleven counties (and cities within) required to have GHG reduction sub-element	2025	2026	2029
○ Benton		X	
○ Clark	X		
○ Franklin		X	
○ King			X
○ Kitsap			X
○ Pierce			X
○ Skagit	X		
○ Snohomish			X
○ Spokane		X	
○ Thurston	X		
○ Whatcom	X		

Includes two sub-elements:

- **Resilience**

Mandatory for all jurisdictions fully planning **under the GMA** and encouraged for others.

- **Greenhouse Gas Emissions Reduction**
Mandatory for 11 counties and their **cities over 6,000** population [*more info on WA Commerce Climate Planning*]

City of Spokane Planning Efforts to Build Upon

Spokane Sustainability Action Plan



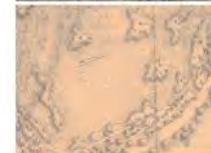
2021



CITY OF SPOKANE
2019 Community and Local Government Operations Greenhouse Gas Emissions INVENTORY REPORT



CITY OF SPOKANE
PARKS AND NATURAL LANDS MASTER PLAN
JUNE 2022 | FINAL PLAN



Spokane County
Hazard Mitigation Plan
Volume 1: Planning-Area-Wide Elements

March 23, 2020
Final Adopted Version



Greenhouse Gas Reduction Sub-element

Set **incremental targets** to achieve net **zero emissions by 2050**.

Adopt **goals and policies** for three climate sectors:

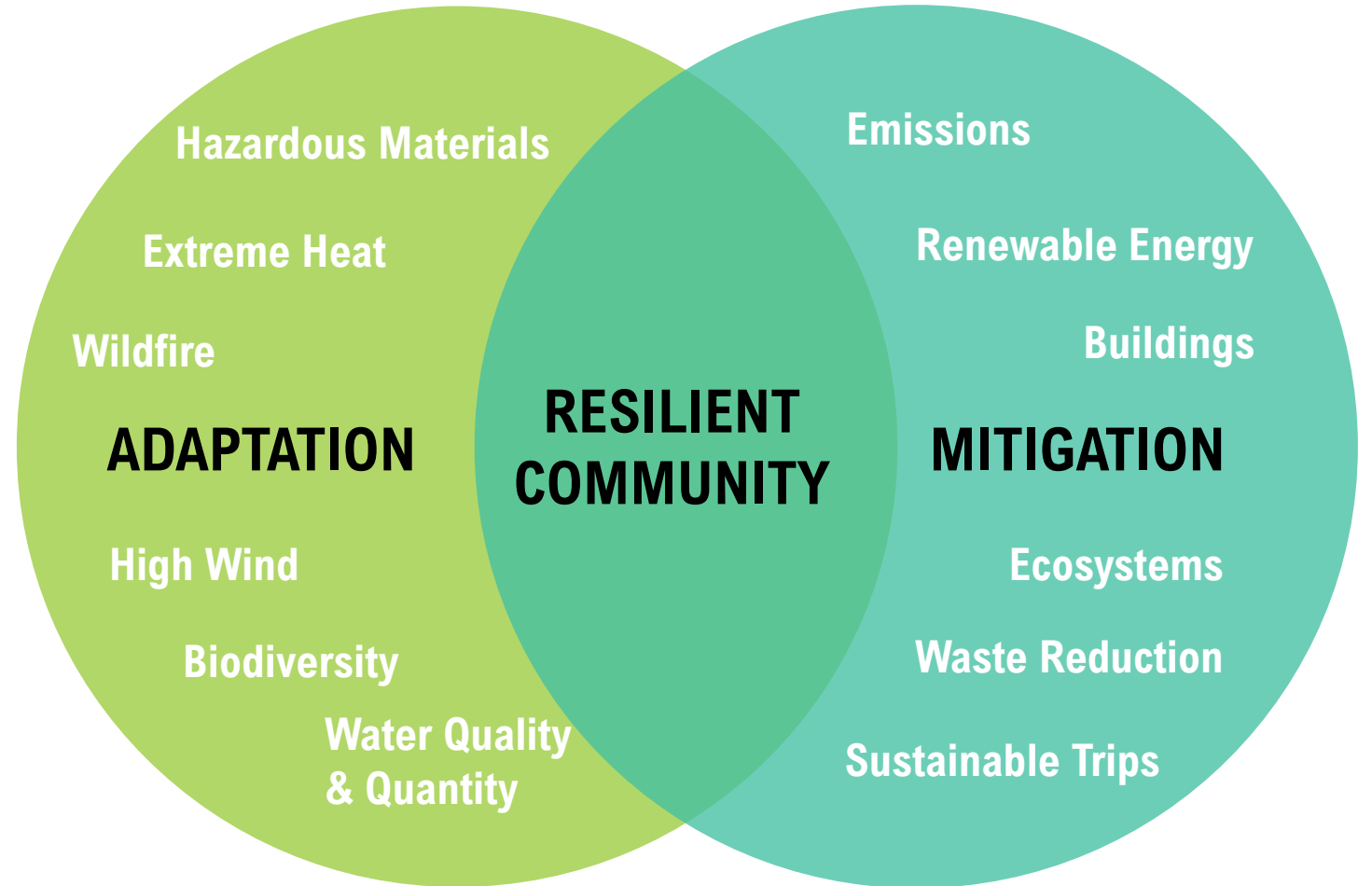
- ✓ **Buildings & Energy**
- ✓ **Transportation**
- ✓ **Zoning & Development**

Minimum Requirements

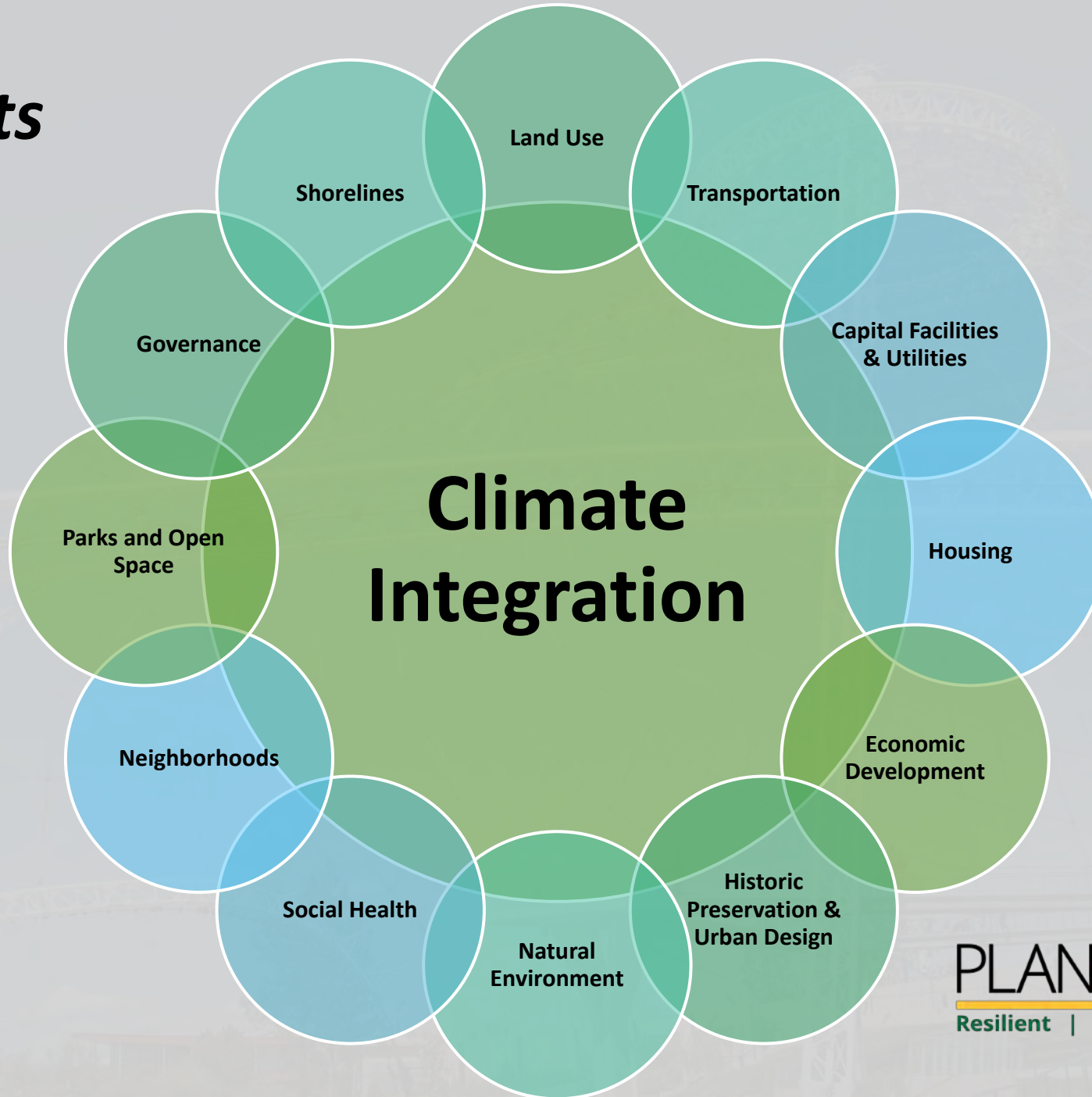
- **Reduce GHG emissions generated by transportation and land use;**
- **Reduce per capita vehicle miles traveled; and**
- **Prioritize reductions that benefit overburdened communities to maximize the co-benefits of reduced air pollution and environmental justice.**

Climate Resilience

Anticipating, preparing for, and **adapting** to changes in climates while **preventing** those **impacts** from growing worse.



Climate affects all aspects of planning and needs an integrative approach.



Project Start-up,
Coordination,
Engagement



Explore Climate
Impacts &
Climate Justice



Audit Plans and
Policies



Assess Climate
Vulnerability
and Risk

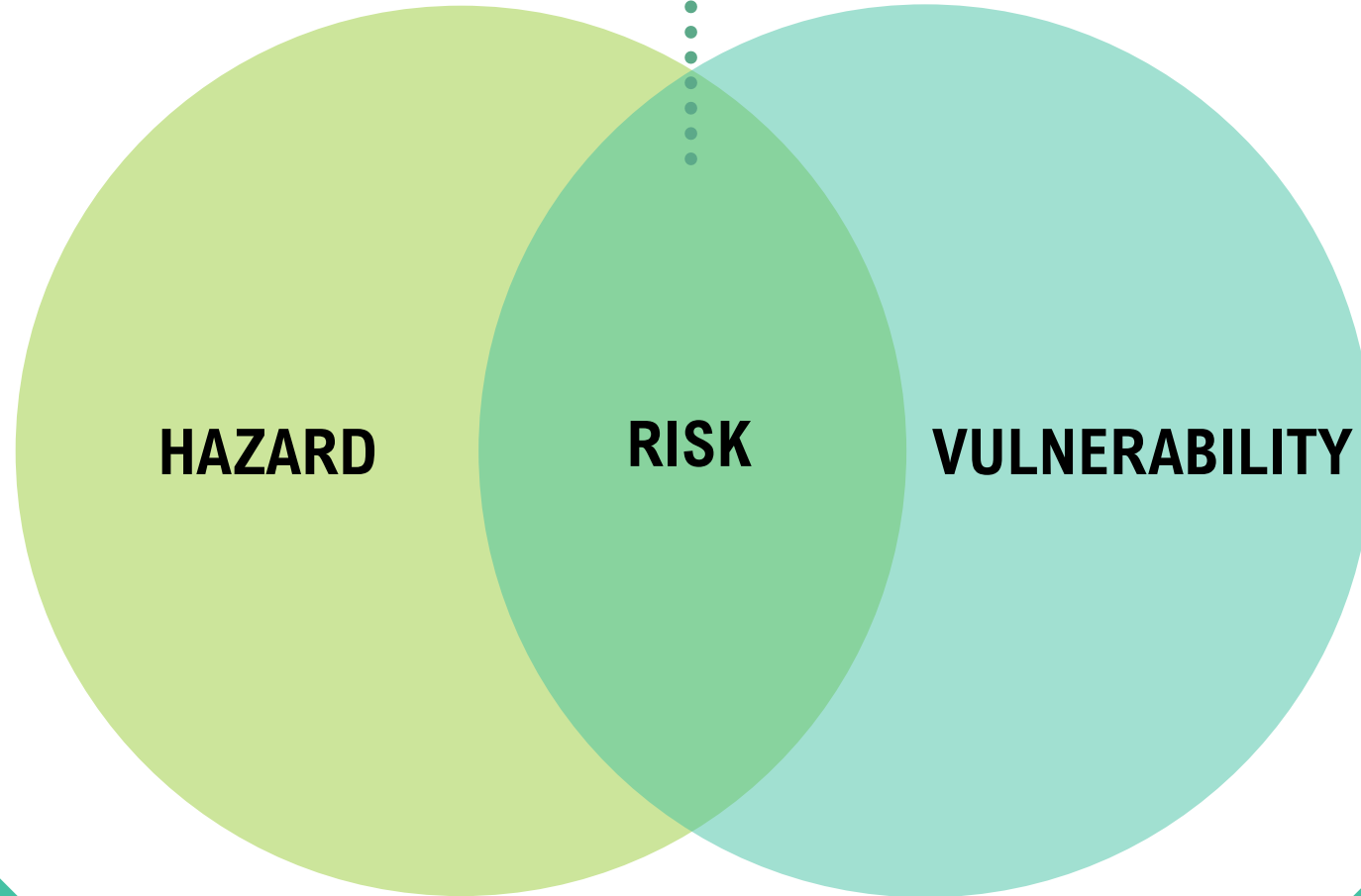


Climate Planning Phase 1

Climate Risk & Vulnerability Assessment

Characterizing risks based on probability (likelihood) and magnitude (level of impact)

Identifying unique climate challenges facing Spokane



Assessing vulnerability of social, economic, environmental community assets



COMMUNITY EXPERIENCES





CLIMATE ELEMENT PLANNING GUIDANCE

Thinking Globally, Planning Locally

Washington state publishes guidance to address climate change in local comprehensive plans

The Washington Department of Commerce published climate planning guidance in January 2024 to help local governments develop a comprehensive plan climate element, as required by a new law (HB 1181). A city or county may integrate its climate element's resilience and mitigation goals and policies into a single chapter or integrate the measures into several chapters/elements such as transportation, housing, and land use.

The guidance – as well as a menu of model climate goals and policies for local governments – is available on Commerce's climate planning website [see QR code, right].

Agency contact

Michael Burnham
CLIMATE PROGRAM MANAGER

Local Government Division

Michael.burnham@commerce.wa.gov

Phone: 206.454.2253

Agency website:



Thank You!



*Comprehensive Plan
Periodic Update
Adding the Climate Element*

PLAN SPOKANE
Resilient | Connected | Livable | 2046