

Kootenai County Aquifer Protection District What we are Planning

May 30, 2024



Idaho:

- DEQ (Ground Water Quality Rule 58.01.11)
 - Sensitive Resource Aquifer Designation
- DWR (Idaho State Water Plan)
 - Rathdrum Prairie Ground Water Management Area

Local:

- ~~PHD IDAPA 41.01.01.400 (5 Acre Rule and Critical Materials Program)~~
 - 5 Acre Septic Rule Adopted by Kootenai County
 - Critical Materials Program Adopted by Coeur d'Alene and Post Falls
- Kootenai County
 - Aquifer Protection District
 - Comprehensive Plan
 - Land Use Development Code
 - Ordinance 574-5 Acre Septic Rule

▶ *“Water is the lifeblood of Idaho. The optimum use of our water will keep Idaho a vital and prosperous state as we grow and change in the future.”*

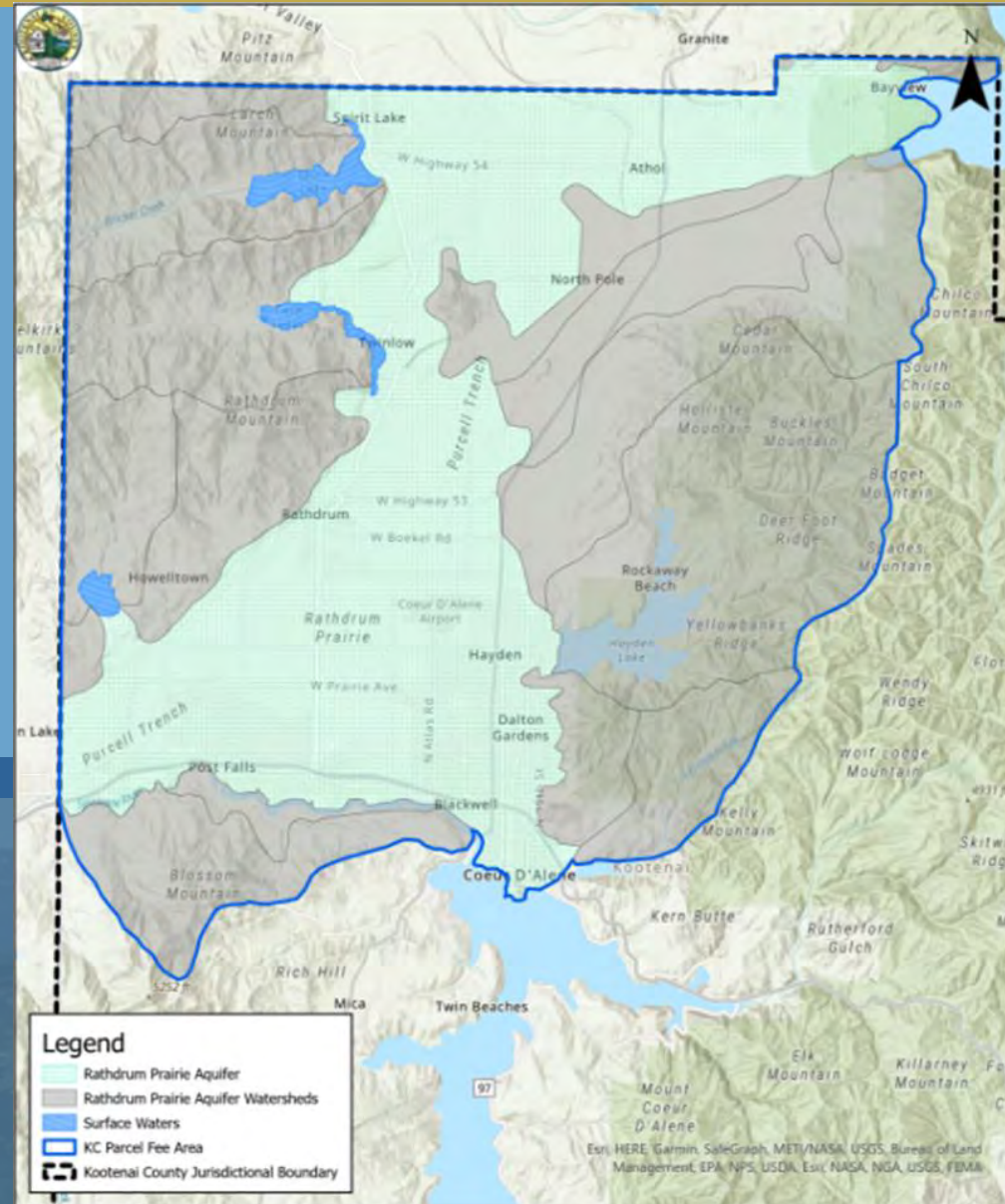
▶ PHD lost Authority to Enforce this Ruleset in 2021

▶ *“Water is an integral part of what we value here. We take seriously our responsibilities to sustain the lakes and rivers that surround us and the aquifer that supports us.”*

Background

Aquifer Protection District was approved by Kootenai County voters in 2006 and established by the BOCC in 2007 for the protection of groundwater quality in the Rathdrum Prairie Aquifer.

Aquifer Protection District



Background

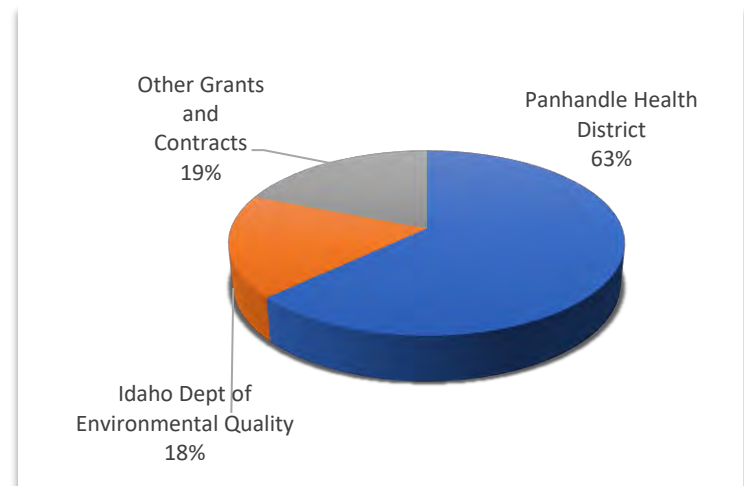
Aquifer Protection District

APD at Work

- Coordinate and Assist Agencies with Regulatory Enforcement and Policy
- Provide Water Quality Monitoring
- Implement Education and Outreach Programs
- Inspect and Prevent Contamination from Pollutants

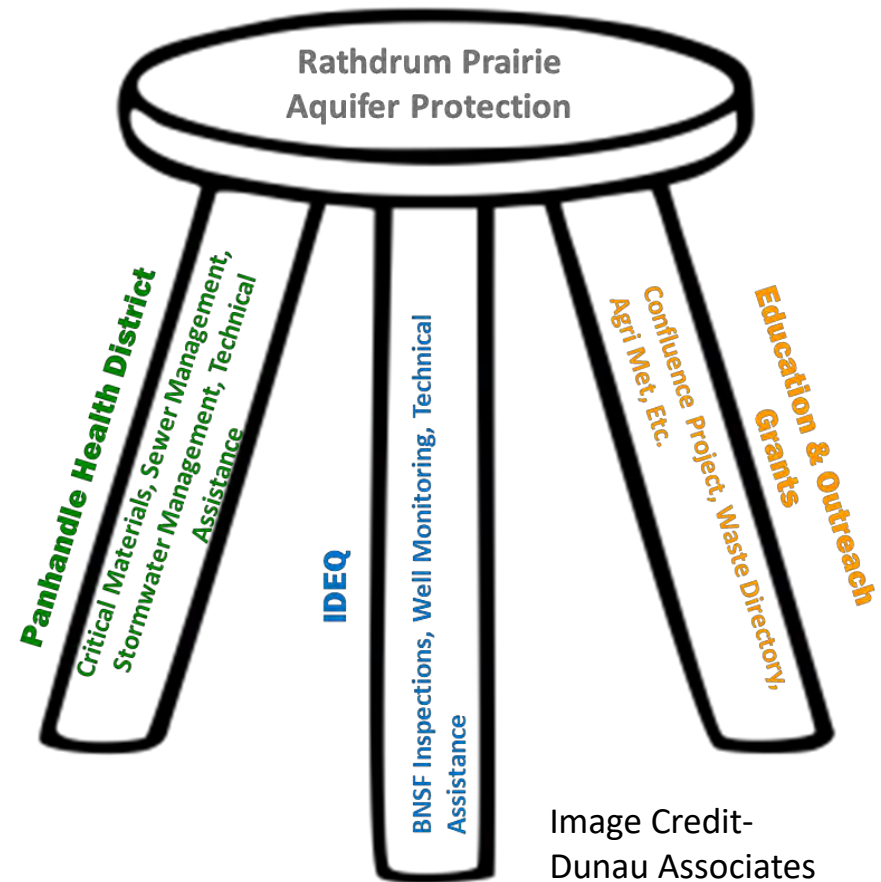
Financial Highlights

- \$542,000: Budget, 6-Year Annual Average
- \$100,000: BNSF Annual Contribution
- \$5.74: Parcel Fee Since 2017



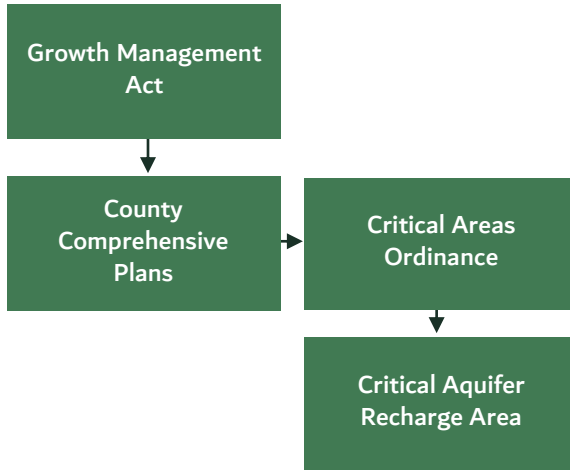
Total Budgeted 2018 – 2024 Expenditures \$3,253,983

- Affirm APD's Mission:
Fund aquifer protection activities to assure safe and healthy drinking water, economic vitality and environmental well-being
- Meet Population Growth and Development Challenges
- Review Past Work and Align with Future Needs
- Identify New Initiatives
SARA's
- Seek Administrative Improvements and Efficiency
(Leverage Resources)

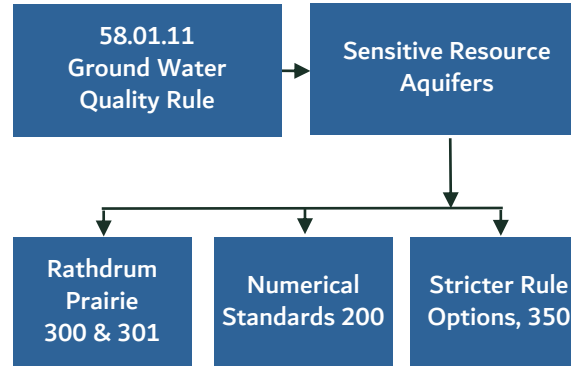


Aquifer Recharge Area Protection Washington versus Idaho

WA Critical Aquifer Recharge Area (CARA)



ID Sensitive Aquifer Recharge Area (SARA)



ID County Comprehensive Plans

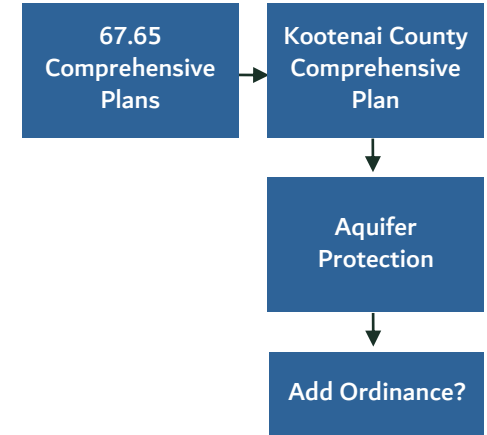


Image Credit-
Dunau Associates



Kootenai County Comprehensive Plan

The Rathdrum Prairie and northern Kootenai County are the two areas best suited to accommodate population increase. These portions of the county have the least geographic and geological constraints. [The Rathdrum Aquifer will continue to warrant protection, however. The community must reconcile its potentially conflicting desires to maintain open space and agricultural character and to concentrate new population growth on the Prairie.](#)

Sensitive Aquifer Recharge Areas

Aquifer Protection District

Work Completed:
Prioritization Mapping by Alta

Work in Progress:

- Map Refinement
- Tool Box for Protection
 - Education
 - Easement/Land Purchase
 - County Ordinance

